

Product datasheet

PE Anti-Granzyme B antibody [EPR20129-217] ab225471

Recombinant RabMAb

[2 Images](#)

Overview

| | |
|----------------------------|---|
| Product name | PE Anti-Granzyme B antibody [EPR20129-217] |
| Description | PE Rabbit monoclonal [EPR20129-217] to Granzyme B |
| Host species | Rabbit |
| Conjugation | PE. Ex: 488nm, Em: 575nm |
| Tested applications | Suitable for: ICC/IF Unsuitable for: Flow Cyt |
| Species reactivity | Reacts with: Human |
| Immunogen | Recombinant full length protein within Human Granzyme B aa 1 to the C-terminus. The exact immunogen sequence used to generate this antibody is proprietary information. If additional detail on the immunogen is needed to determine the suitability of the antibody for your needs, please contact our Scientific Support team to discuss your requirements. Database link: P10144 |
| Positive control | ICC/IF: Jurkat cells |
| General notes | This product is a recombinant monoclonal antibody, which offers several advantages including: <ul style="list-style-type: none">- High batch-to-batch consistency and reproducibility- Improved sensitivity and specificity- Long-term security of supply- Animal-free production For more information see here . Our RabMAb [®] technology is a patented hybridoma-based technology for making rabbit monoclonal antibodies. For details on our patents, please refer to RabMAb[®] patents . |

Properties

| | |
|-----------------------------|--|
| Form | Liquid |
| Storage instructions | Shipped at 4°C. Store at +4°C short term (1-2 weeks). Upon delivery aliquot. Store at +4°C. Store In the Dark. |
| Storage buffer | pH: 7.4 Preservative: 0.02% Sodium azide Constituents: 1% BSA, PBS |

| | |
|---------------------|--------------------|
| Purity | Protein A purified |
| Clonality | Monoclonal |
| Clone number | EPR20129-217 |
| Isotype | IgG |

Applications

The Abpromise guarantee Our **Abpromise guarantee** covers the use of ab225471 in the following tested applications. The application notes include recommended starting dilutions; optimal dilutions/concentrations should be determined by the end user.

| Application | Abreviews | Notes |
|-------------|-----------|--------|
| ICC/IF | | 1/100. |

Application notes Is unsuitable for Flow Cyt.

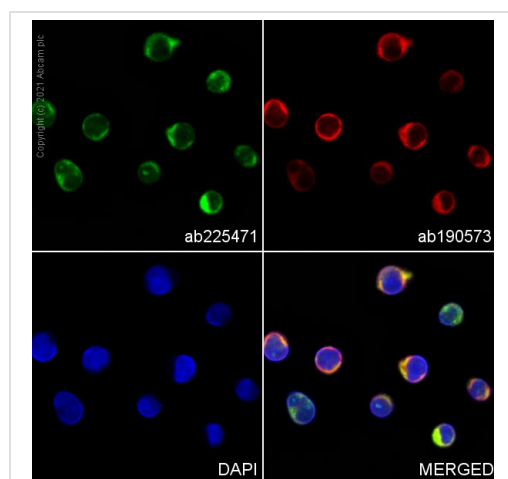
Target

Function This enzyme is necessary for target cell lysis in cell-mediated immune responses. It cleaves after Asp. Seems to be linked to an activation cascade of caspases (aspartate-specific cysteine proteases) responsible for apoptosis execution. Cleaves caspase-3, -7, -9 and 10 to give rise to active enzymes mediating apoptosis.

Sequence similarities Belongs to the peptidase S1 family. Granzyme subfamily. Contains 1 peptidase S1 domain.

Cellular localization Cytoplasmic granule. Cytoplasmic granules of cytolytic T-lymphocytes and natural killer cells.

Images



ab225471 staining Granzyme B in Jurkat cells. The cells were fixed with 80% methanol (5 min), permeabilized with 0.1% Triton X-100 for 5 minutes and then blocked with 1% BSA/10% normal goat serum/0.3M glycine in 0.1% PBS-Tween for 1h. The cells were then incubated overnight at +4°C with ab225471 at 1/100 dilution (shown in green) and **ab190573**, Rabbit monoclonal to alpha Tubulin (Alexa Fluor® 647), at 1/250 dilution (shown in red). Nuclear DNA was labelled with DAPI (shown in blue).

Image was taken with a confocal microscope (Leica-Microsystems, TCS SP8).

Immunocytochemistry/ Immunofluorescence - PE
Anti-Granzyme B antibody [EPR20129-217]
(ab225471)

Why choose a recombinant antibody?



Research with confidence
Consistent and reproducible results



Long-term and scalable supply
Recombinant technology



Success from the first experiment
Confirmed specificity



Ethical standards compliant
Animal-free production

PE Anti-Granzyme B antibody [EPR20129-217]
(ab225471)

Please note: All products are "FOR RESEARCH USE ONLY. NOT FOR USE IN DIAGNOSTIC PROCEDURES"

Our Abpromise to you: Quality guaranteed and expert technical support

- Replacement or refund for products not performing as stated on the datasheet
- Valid for 12 months from date of delivery
- Response to your inquiry within 24 hours
- We provide support in Chinese, English, French, German, Japanese and Spanish
- Extensive multi-media technical resources to help you
- We investigate all quality concerns to ensure our products perform to the highest standards

If the product does not perform as described on this datasheet, we will offer a refund or replacement. For full details of the Abpromise, please visit <https://www.abcam.com/abpromise> or contact our technical team.

Terms and conditions

- Guarantee only valid for products bought direct from Abcam or one of our authorized distributors