

Product datasheet

PE Anti-HLA E + HLA Class 1 ABC antibody [TP25.99SF] ab242063

[1 Image](#)

Overview

Product name	PE Anti-HLA E + HLA Class 1 ABC antibody [TP25.99SF]
Description	PE Mouse monoclonal [TP25.99SF] to HLA E + HLA Class 1 ABC
Host species	Mouse
Conjugation	PE. Ex: 488nm, Em: 575nm
Specificity	ab242063 recognizes HLA-ABC and HLA-E molecules, but not HLA-G. It can be used for discrimination between HLA-G and other HLA-class I antigens.
Tested applications	Suitable for: Flow Cyt
Species reactivity	Reacts with: Human
Immunogen	Tissue, cells or virus. IFN-gamma-treated human melanoma cells Colo 38.
Positive control	Flow cyt: Human peripheral blood cells.
General notes	<p>The Life Science industry has been in the grips of a reproducibility crisis for a number of years. Abcam is leading the way in addressing this with our range of recombinant monoclonal antibodies and knockout edited cell lines for gold-standard validation. Please check that this product meets your needs before purchasing.</p> <p>If you have any questions, special requirements or concerns, please send us an inquiry and/or contact our Support team ahead of purchase. Recommended alternatives for this product can be found below, along with publications, customer reviews and Q&As</p>

Properties

Form	Liquid
Storage instructions	Shipped at 4°C. Upon delivery aliquot. Store at +4°C. Store In the Dark.
Storage buffer	pH: 7.40 Preservative: 0.0975% Sodium azide Constituents: PBS, 0.2% BSA
Purity	Size exclusion
Purification notes	The purified antibody is conjugated with R-Phycoerythrin (PE) under optimum conditions. The conjugate is purified by size-exclusion chromatography.
Clonality	Monoclonal

Clone number TP25.99SF
Isotype IgG1

Applications

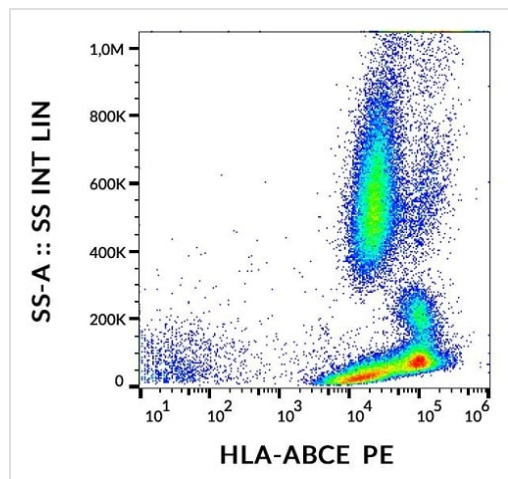
The Abpromise guarantee Our **Abpromise guarantee** covers the use of ab242063 in the following tested applications. The application notes include recommended starting dilutions; optimal dilutions/concentrations should be determined by the end user.

Application	Abreviews	Notes
Flow Cyt		Use a concentration of 1 - 5 µg/ml.

Target

Cellular localization HLA E: Membrane; Single-pass type I membrane protein HLA Class 1 ABC: Cell Membrane; Single-pass type I membrane protein

Images



Flow Cytometry analysis of human peripheral blood labeling HLA E + HLA Class 1 ABC using ab242063 at 3 µg/ml. Surface staining.

Flow Cytometry - PE Anti-HLA E + HLA Class 1
ABC antibody [TP25.99SF] (ab242063)

Please note: All products are "FOR RESEARCH USE ONLY. NOT FOR USE IN DIAGNOSTIC PROCEDURES"

Our Abpromise to you: Quality guaranteed and expert technical support

- Replacement or refund for products not performing as stated on the datasheet
- Valid for 12 months from date of delivery
- Response to your inquiry within 24 hours
- We provide support in Chinese, English, French, German, Japanese and Spanish

- Extensive multi-media technical resources to help you
- We investigate all quality concerns to ensure our products perform to the highest standards

If the product does not perform as described on this datasheet, we will offer a refund or replacement. For full details of the Abpromise, please visit <https://www.abcam.com/abpromise> or contact our technical team.

Terms and conditions

- Guarantee only valid for products bought direct from Abcam or one of our authorized distributors