

## Product datasheet

### PE Anti-IL-15RA antibody [EPR24784-142] ab283252

Recombinant RabMAb

1 Image

#### Overview

<b>Product name</b>	PE Anti-IL-15RA antibody [EPR24784-142]
<b>Description</b>	PE Rabbit monoclonal [EPR24784-142] to IL-15RA
<b>Host species</b>	Rabbit
<b>Conjugation</b>	PE. Ex: 488nm, Em: 575nm
<b>Tested applications</b>	<b>Suitable for:</b> Flow Cyt
<b>Species reactivity</b>	<b>Reacts with:</b> Human
<b>Immunogen</b>	Recombinant fragment. This information is proprietary to Abcam and/or its suppliers.
<b>Positive control</b>	Flow cyt: A-172 cells.
<b>General notes</b>	<p>This antibody clone is manufactured by Abcam. If you require a custom buffer formulation or conjugation for your experiments, please contact <a href="mailto:orders@abcam.com">orders@abcam.com</a>.</p> <p>This product is a recombinant monoclonal antibody, which offers several advantages including:</p> <ul style="list-style-type: none"> <li>- High batch-to-batch consistency and reproducibility</li> <li>- Improved sensitivity and specificity</li> <li>- Long-term security of supply</li> <li>- Animal-free production</li> </ul> <p>For more information <a href="#">see here</a>.</p> <p>Our RabMAb<sup>®</sup> technology is a patented hybridoma-based technology for making rabbit monoclonal antibodies. For details on our patents, please refer to <a href="#">RabMAb<sup>®</sup> patents</a>.</p>

#### Properties

<b>Form</b>	Liquid
<b>Storage instructions</b>	Shipped at 4°C. Store at +4°C short term (1-2 weeks). Upon delivery aliquot. Store at +4°C. Avoid freeze / thaw cycle. Store In the Dark.
<b>Storage buffer</b>	<p>pH: 7.40</p> <p>Preservative: 0.02% Sodium azide</p> <p>Constituents: 98% PBS, 1% BSA</p>
<b>Purity</b>	Protein A purified
<b>Clonality</b>	Monoclonal

Clone number	EPR24784-142
Isotype	IgG

## Applications

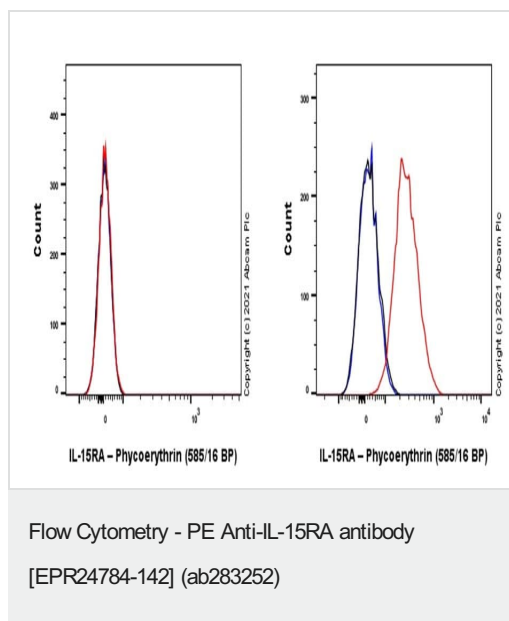
**The Abpromise guarantee** Our **Abpromise guarantee** covers the use of ab283252 in the following tested applications. The application notes include recommended starting dilutions; optimal dilutions/concentrations should be determined by the end user.

Application	Abreviews	Notes
Flow Cyt		1/50.

## Target

<b>Function</b>	Receptor for interleukin-15. Expression of different isoforms may alter or interfere with signal transduction. Isoform 5, isoform 6, isoform 7 and isoform 8 do not bind IL15. Signal transduction involves STAT3, STAT5, STAT6, JAK2 (By similarity) and SYK.
<b>Tissue specificity</b>	Isoform 1, isoform 3, isoform 4, isoform 5, isoform 6, isoform 7, isoform 8 and isoform 9 are widely expressed. Expressed in fetal brain with higher expression in the hippocampus and cerebellum than in cortex and thalamus. Higher levels of soluble sIL-15RA form in comparison with membrane-bound forms is present in all brain structures.
<b>Sequence similarities</b>	Contains 1 Sushi (CCP/SCR) domain.
<b>Post-translational modifications</b>	A soluble form (sIL-15RA) arises from proteolytic shedding of the membrane-anchored receptor. The cleavage involves ADAM17/TACE (By similarity). It also binds IL-15 and thus interferes with IL-15 binding to the membrane receptor. Phosphorylated by activated SYK. N-glycosylated and O-glycosylated.
<b>Cellular localization</b>	Secreted > extracellular space; Membrane. Nucleus membrane. Mainly found associated with the nuclear membrane and Endoplasmic reticulum membrane. Golgi apparatus membrane. Cytoplasmic vesicle membrane. Membrane. Isoform 5, isoform 6, isoform 7 and isoform 8 are associated with endoplasmic reticulum, Golgi and cytoplasmic vesicles, but not with the nuclear membrane.

## Images



Flow cytometry overlay histogram showing right A-172 positive cells and left negative Daudi cells stained with ab283252 (red line). The cells were incubated in 1x PBS containing 10 % normal goat serum to block non-specific protein-protein interaction followed by the antibody (ab283252) ( $1 \times 10^6$  in 100 $\mu$ l at 10 $\mu$ g/ml (1/50)) for 30 min on ice.

Isotype control antibody (black line) was Rabbit IgG (monoclonal) Phycoerythrin (**ab209478**) used at the same concentration and conditions as the primary antibody. Unlabelled sample (blue line) was also used as a control.

Acquisition of >5000 events were collected using a 50 mW Yellow/Green laser (561nm) and 585/42 bandpass filter.

**Please note:** All products are "FOR RESEARCH USE ONLY. NOT FOR USE IN DIAGNOSTIC PROCEDURES"

### Our Abpromise to you: Quality guaranteed and expert technical support

- Replacement or refund for products not performing as stated on the datasheet
- Valid for 12 months from date of delivery
- Response to your inquiry within 24 hours
- We provide support in Chinese, English, French, German, Japanese and Spanish
- Extensive multi-media technical resources to help you
- We investigate all quality concerns to ensure our products perform to the highest standards

If the product does not perform as described on this datasheet, we will offer a refund or replacement. For full details of the Abpromise, please visit <https://www.abcam.com/abpromise> or contact our technical team.

### Terms and conditions

- Guarantee only valid for products bought direct from Abcam or one of our authorized distributors