


Product datasheet

PE Anti-M6PR (cation independent) antibody [MEM-238] α b77135

[1 References](#) [1 Image](#)

Overview

Product name	PE Anti-M6PR (cation independent) antibody [MEM-238]
Description	PE Mouse monoclonal [MEM-238] to M6PR (cation independent)
Host species	Mouse
Conjugation	PE. Ex: 488nm, Em: 575nm
Tested applications	Suitable for: Flow Cyt (Intra), Flow Cyt
Species reactivity	Reacts with: Human Predicted to work with: Non human primates 
Immunogen	Tissue, cells or virus corresponding to Human M6PR (cation independent).
Epitope	Ab77135 recognizes an epitope between domains 2 and 5 of CD222
Positive control	Flow Cyt: Human blood cells
General notes	<p>The Life Science industry has been in the grips of a reproducibility crisis for a number of years. Abcam is leading the way in addressing this with our range of recombinant monoclonal antibodies and knockout edited cell lines for gold-standard validation. Please check that this product meets your needs before purchasing.</p> <p>If you have any questions, special requirements or concerns, please send us an inquiry and/or contact our Support team ahead of purchase. Recommended alternatives for this product can be found below, along with publications, customer reviews and Q&As</p>

Properties

Form	Liquid
Storage instructions	Shipped at 4°C. Store at +4°C.
Storage buffer	<p>pH: 7.4</p> <p>Preservative: 0.097% Sodium azide</p> <p>Constituents: 0.2% BSA, 0.2% PBS</p> <p>0.2% BSA (high-grade protease free)</p>
Purity	Size exclusion
Purification notes	Purity >95% by SDS-PAGE.

Clonality	Monoclonal
Clone number	MEM-238
Isotype	IgG1

Applications

The Abpromise guarantee Our **Abpromise guarantee** covers the use of ab77135 in the following tested applications.

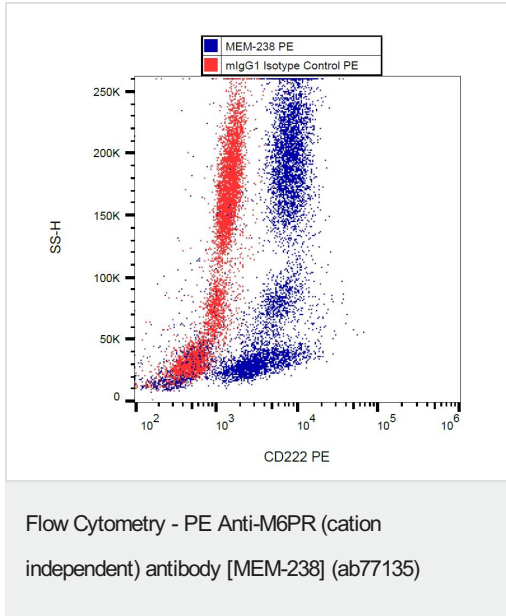
The application notes include recommended starting dilutions; optimal dilutions/concentrations should be determined by the end user.

Application	Abreviews	Notes
Flow Cyt (Intra)		Use at an assay dependent concentration. Use 20 ul for 10 ⁶ cells in a suspension or 100 ul of whole blood. ab91357 - Mouse monoclonal IgG1, is suitable for use as an isotype control with this antibody.
Flow Cyt		Use at an assay dependent concentration.

Target

Function	Transport of phosphorylated lysosomal enzymes from the Golgi complex and the cell surface to lysosomes. Lysosomal enzymes bearing phosphomannosyl residues bind specifically to mannose-6-phosphate receptors in the Golgi apparatus and the resulting receptor-ligand complex is transported to an acidic prelysosomal compartment where the low pH mediates the dissociation of the complex. This receptor also binds IGF2. Acts as a positive regulator of T-cell coactivation, by binding DPP4.
Sequence similarities	Belongs to the MRL1/IGF2R family. Contains 1 fibronectin type-II domain.
Domain	Contains 15 repeating units of approximately 147 AA harboring four disulfide bonds each. The most highly conserved region within the repeat consists of a stretch of 13 AA that contains cysteines at both ends.
Cellular localization	Lysosome membrane. Colocalized with DPP4 in internalized cytoplasmic vesicles adjacent to the cell surface.

Images



Flow cytometry analysis (intracellular staining) of human peripheral blood with anti-CD222 (MEM-238) PE.

Please note: All products are "FOR RESEARCH USE ONLY. NOT FOR USE IN DIAGNOSTIC PROCEDURES"

Our Abpromise to you: Quality guaranteed and expert technical support

- Replacement or refund for products not performing as stated on the datasheet
- Valid for 12 months from date of delivery
- Response to your inquiry within 24 hours
- We provide support in Chinese, English, French, German, Japanese and Spanish
- Extensive multi-media technical resources to help you
- We investigate all quality concerns to ensure our products perform to the highest standards

If the product does not perform as described on this datasheet, we will offer a refund or replacement. For full details of the Abpromise, please visit <https://www.abcam.com/abpromise> or contact our technical team.

Terms and conditions

- Guarantee only valid for products bought direct from Abcam or one of our authorized distributors