

PE Anti-PD1 antibody [J43.1] ab210291

[1 References](#) [1 Image](#)

Overview

Product name	PE Anti-PD1 antibody [J43.1]
Description	PE Armenian hamster monoclonal [J43.1] to PD1
Host species	Armenian hamster
Conjugation	PE. Ex: 488nm, Em: 575nm
Tested applications	Suitable for: Flow Cyt
Species reactivity	Reacts with: Mouse
Immunogen	The details of the immunogen for this antibody are not available.
Positive control	C57Bl/6 splenocytes stimulated with ConA
General notes	<p>The Life Science industry has been in the grips of a reproducibility crisis for a number of years. Abcam is leading the way in addressing this with our range of recombinant monoclonal antibodies and knockout edited cell lines for gold-standard validation. Please check that this product meets your needs before purchasing.</p> <p>If you have any questions, special requirements or concerns, please send us an inquiry and/or contact our Support team ahead of purchase. Recommended alternatives for this product can be found below, along with publications, customer reviews and Q&As</p>

Properties

Form	Liquid
Storage instructions	Shipped at 4°C. Store at +4°C. Store In the Dark.
Storage buffer	<p>pH: 7.20</p> <p>Preservative: 0.09% Sodium azide</p> <p>Constituents: 0.12% Monobasic dihydrogen sodium phosphate, 0.87% Sodium chloride, 0.1% Gelatin</p>
Purity	Affinity purified
Purification notes	ab210291 was purified from tissue culture supernatant via affinity chromatography. The purified antibody was conjugated under optimal conditions, with unreacted dye removed from the preparation.
Clonality	Monoclonal
Clone number	J43.1

Isotype

IgG

Applications

The Abpromise guarantee

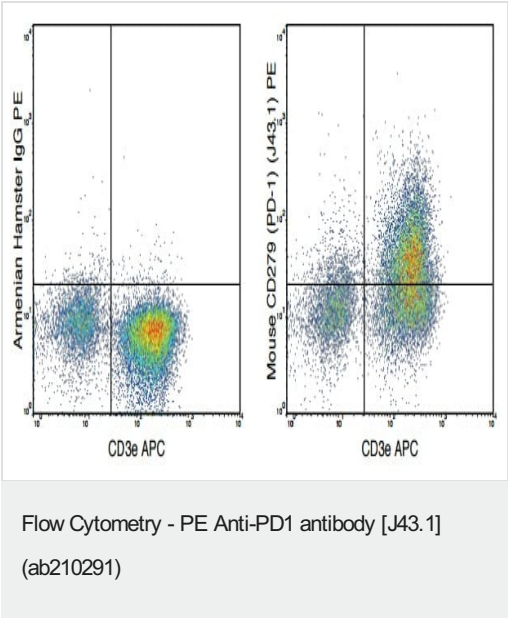
Our **Abpromise guarantee** covers the use of ab210291 in the following tested applications.
The application notes include recommended starting dilutions; optimal dilutions/concentrations should be determined by the end user.

Application	Abreviews	Notes
Flow Cyt		Use at an assay dependent concentration. Use at 0.5 µg.

Target

Function	Possible cell death inducer, in association with other factors.
Involvement in disease	Genetic variation in PDCD1 is associated with susceptibility to systemic lupus erythematosus type 2 (SLEB2) [MIM:605218]. Systemic lupus erythematosus is a chronic, inflammatory and often febrile multisystemic disorder of connective tissue. It affects principally the skin, joints, kidneys and serosal membranes. It is thought to represent a failure of the regulatory mechanisms of the autoimmune system.
Sequence similarities	Contains 1 Ig-like V-type (immunoglobulin-like) domain.
Developmental stage	Induced at programmed cell death.
Cellular localization	Membrane.

Images



Flow cytometric analysis of C57Bl/6 splenocytes stimulated with ConA and then stained with an Allophycocyanin Anti-Mouse CD3e antibody and 0.5 µg ab210291 (right panel) or 0.5 µg PE Armenian Hamster IgG isotype control (left panel).

Please note: All products are "FOR RESEARCH USE ONLY. NOT FOR USE IN DIAGNOSTIC PROCEDURES"

Our Abpromise to you: Quality guaranteed and expert technical support

- Replacement or refund for products not performing as stated on the datasheet
- Valid for 12 months from date of delivery
- Response to your inquiry within 24 hours

- We provide support in Chinese, English, French, German, Japanese and Spanish
- Extensive multi-media technical resources to help you
- We investigate all quality concerns to ensure our products perform to the highest standards

If the product does not perform as described on this datasheet, we will offer a refund or replacement. For full details of the Abpromise, please visit <https://www.abcam.com/abpromise> or contact our technical team.

Terms and conditions

- Guarantee only valid for products bought direct from Abcam or one of our authorized distributors