

## Product datasheet

# PE Anti-PD1 antibody [NAT105] ab314418

Recombinant

[2 Images](#)

### Overview

---

<b>Product name</b>	PE Anti-PD1 antibody [NAT105]
<b>Description</b>	PE Mouse monoclonal [NAT105] to PD1
<b>Host species</b>	Mouse
<b>Conjugation</b>	PE. Ex: 488nm, Em: 575nm
<b>Tested applications</b>	<b>Suitable for:</b> Flow Cyt
<b>Species reactivity</b>	<b>Reacts with:</b> Human
<b>Immunogen</b>	Tissue, cells or virus. This information is proprietary to Abcam and/or its suppliers.
<b>Positive control</b>	Flow Cyt: Human peripheral blood mononuclear cells (PBMCs)
<b>General notes</b>	<p>This antibody clone is manufactured by Abcam. If you require a custom buffer formulation or conjugation for your experiments, please contact <a href="mailto:orders@abcam.com">orders@abcam.com</a>.</p> <p>This product is a recombinant monoclonal antibody, which offers several advantages including:</p> <ul style="list-style-type: none"><li>- High batch-to-batch consistency and reproducibility</li><li>- Improved sensitivity and specificity</li><li>- Long-term security of supply</li><li>- Animal-free production</li></ul> <p>For more information <a href="#">see here</a>.</p> <p>Our RabMAb<sup>®</sup> technology is a patented hybridoma-based technology for making rabbit monoclonal antibodies. For details on our patents, please refer to <a href="#">RabMAb<sup>®</sup> patents</a>.</p>

### Properties

---

<b>Form</b>	Liquid
<b>Storage instructions</b>	Shipped at 4°C. Store at +4°C short term (1-2 weeks). Upon delivery aliquot. Store at +4°C. Store In the Dark.
<b>Storage buffer</b>	pH: 7.40 Preservative: 0.02% Sodium azide Constituents: 98% PBS, 1% BSA
<b>Purity</b>	Protein A purified
<b>Clonality</b>	Monoclonal

Clone number NAT105  
 Isotype IgG1

## Applications

**The Abpromise guarantee** Our **Abpromise guarantee** covers the use of ab314418 in the following tested applications. The application notes include recommended starting dilutions; optimal dilutions/concentrations should be determined by the end user.

Application	Abreviews	Notes
Flow Cyt		1/500.

## Target

**Function** Possible cell death inducer, in association with other factors.

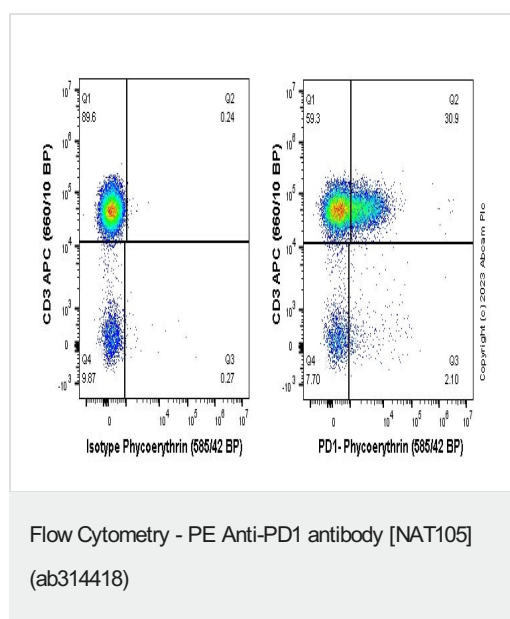
**Involvement in disease** Genetic variation in PDCD1 is associated with susceptibility to systemic lupus erythematosus type 2 (SLEB2) [MIM:605218]. Systemic lupus erythematosus is a chronic, inflammatory and often febrile multisystemic disorder of connective tissue. It affects principally the skin, joints, kidneys and serosal membranes. It is thought to represent a failure of the regulatory mechanisms of the autoimmune system.

**Sequence similarities** Contains 1 Ig-like V-type (immunoglobulin-like) domain.

**Developmental stage** Induced at programmed cell death.

**Cellular localization** Membrane.

## Images



Flow cytometry staining of human peripheral blood mononuclear cells (PBMCs) with ab314418 (right) or PE Mouse IgG1 [B11/6] - Isotype Control (left). PBMCs were incubated for 30 min on ice in 1x PBS containing 10 µg/ml human IgG and 10% normal goat serum to block FC receptors and non-specific protein-protein interaction followed by the antibody ab314418 or PE Mouse IgG1 [B11/6] - Isotype Control (1x 10<sup>6</sup> in 100 µl at 1.0 µg/ml (1/500)) for 30min on ice. The cells were simultaneously stained with CD3.

Acquisition of >30000 events were collected using a 50 mW Yellow/Green laser (561nm) and 585/42 bandpass filter. Events were gated on viable lymphocytes.

### Why choose a recombinant antibody?



**Research with confidence**  
Consistent and reproducible results



**Long-term and scalable supply**  
Recombinant technology



**Success from the first experiment**  
Confirmed specificity



**Ethical standards compliant**  
Animal-free production

PE Anti-PD1 antibody [NAT105] (ab314418)

**Please note:** All products are "FOR RESEARCH USE ONLY. NOT FOR USE IN DIAGNOSTIC PROCEDURES"

### Our Abpromise to you: Quality guaranteed and expert technical support

---

- Replacement or refund for products not performing as stated on the datasheet
- Valid for 12 months from date of delivery
- Response to your inquiry within 24 hours
- We provide support in Chinese, English, French, German, Japanese and Spanish
- Extensive multi-media technical resources to help you
- We investigate all quality concerns to ensure our products perform to the highest standards

If the product does not perform as described on this datasheet, we will offer a refund or replacement. For full details of the Abpromise, please visit <https://www.abcam.com/abpromise> or contact our technical team.

### Terms and conditions

---

- Guarantee only valid for products bought direct from Abcam or one of our authorized distributors