

## Product datasheet

# PE Rabbit IgG, monoclonal [EPR25A] - Isotype Control ab209478

Recombinant RabMAb

[3 References](#) [4 Images](#)

### Overview

|                            |  |
|----------------------------|--|
| <b>Product name</b>        | PE Rabbit IgG, monoclonal [EPR25A] - Isotype Control   |
| <b>Conjugation</b>         | PE. Ex: 488nm, Em: 575nm   |
| <b>Tested applications</b> | <b>Suitable for:</b> Flow Cyt (Intra), ICC/IF  |
| <b>Immunogen</b>           | Chemical/ Small Molecule conjugated to keyhole limpet haemocyanin. KLH is a copper containing oxygen carrier occurring freely dissolved in the hemolymph of many molluscs and arthropods. KLH forms a large complex composed of ~50 kDa subunits.  |
| <b>General notes</b>       | <p>KLH is often used in molecular immunology as a carrier protein conjugated to low molecular weight molecules such as peptides, amino acids, nucleic acids, drugs or toxins to render them more immunogenic due to the size of the conjugate complex and the immunogenicity of KLH.</p> <p>This product is a recombinant monoclonal antibody, which offers several advantages including:</p> <ul style="list-style-type: none"> <li>- High batch-to-batch consistency and reproducibility</li> <li>- Improved sensitivity and specificity</li> <li>- Long-term security of supply</li> <li>- Animal-free production</li> </ul> <p>For more information <a href="#">see here</a>.</p> <p>Our RabMAb<sup>®</sup> technology is a patented hybridoma-based technology for making rabbit monoclonal antibodies. For details on our patents, please refer to <a href="#">RabMAb<sup>®</sup> patents</a>.</p> |

### Properties

|                             |   |
|-----------------------------|---|
| <b>Form</b>                 | Liquid  |
| <b>Storage instructions</b> | Shipped at 4°C. Upon delivery aliquot. Store at +4°C. Store In the Dark.  |
| <b>Storage buffer</b>       | <p>pH: 7.40</p> <p>Preservative: 0.01% Sodium azide</p> <p>Constituents: 59% PBS, 40% Glycerol (glycerin, glycerine), 0.05% BSA</p> |
| <b>Purity</b>               | Protein A purified  |
| <b>Clonality</b>            | Monoclonal  |
| <b>Clone number</b>         | EPR25A  |

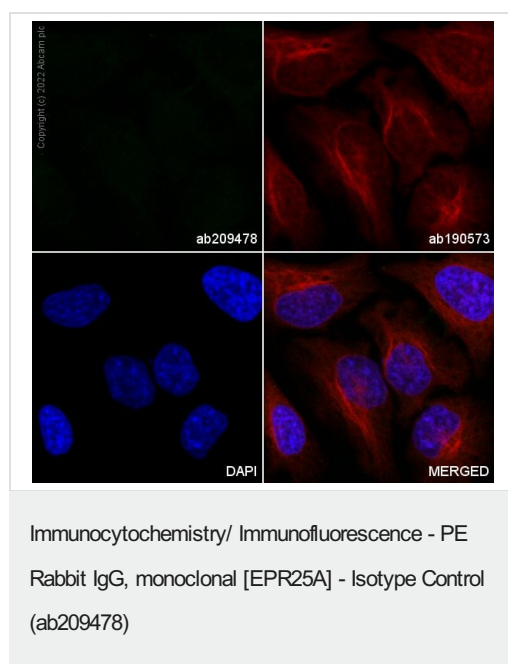
|                       |          |
|-----------------------|----------|
| Isotype               | IgG      |
| Cellular localization | Secreted |

## Applications

**The Abpromise guarantee** Our **Abpromise guarantee** covers the use of ab209478 in the following tested applications. The application notes include recommended starting dilutions; optimal dilutions/concentrations should be determined by the end user.

| Application      | Abreviews | Notes   |
|------------------|-----------|---|
| Flow Cyt (Intra) |           | Use at an assay dependent concentration.<br><b>Please note:</b> This product should be diluted to the same concentration (not dilution) of the primary antibody to be used. |
| ICC/IF           |           | 1/100.<br>This product gave a positive signal in HeLa cells fixed with 4% formaldehyde (10 min) and 100% methanol (5 min)   |

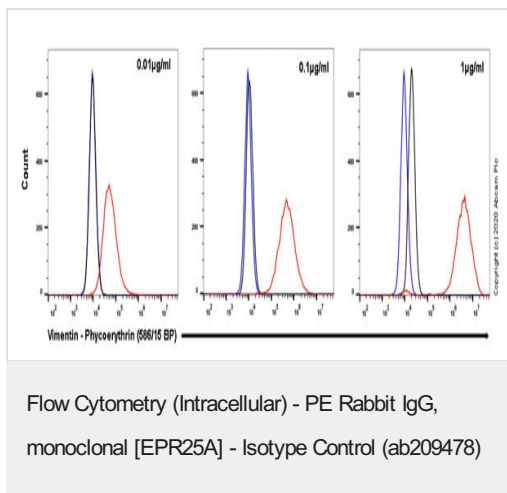
## Images



Immunofluorescent analysis of HeLa (human cervical cancer) cells, fixed with 100% methanol (5 min). The cells were permeabilized with 0.1% Triton X-100 for 5 minutes and blocked with 1% BSA/10% normal goat serum/0.3M glycine in 0.1% PBS-Tween for 1h. The cells were then incubated overnight at +4°C with ab209478 (Rabbit IgG, monoclonal [EPR25A] - Isotype Control) at 1/100 dilution (showing no signal) and **ab190573**, Rabbit monoclonal to Tubulin Microtubule Marker (Alexa Fluor® 647), at 1/250 dilution (shown in red). Nuclear DNA was labelled with DAPI (shown in blue).

Image was taken with a confocal microscope (Leica-Microsystems, TCS SP8).

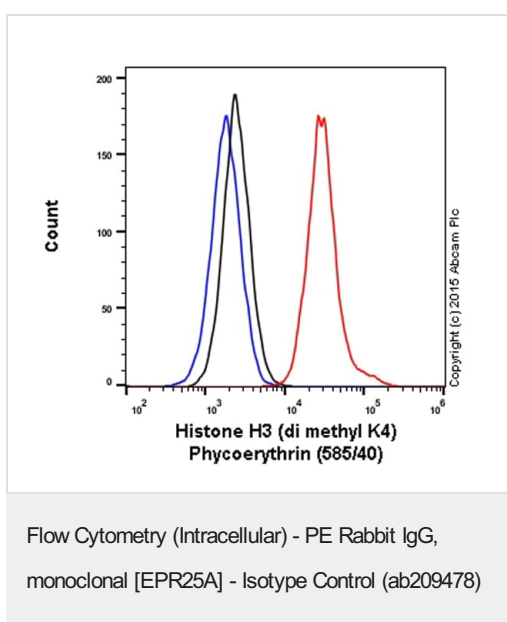
This product also gave a positive outcome under the same testing conditions in HeLa cells fixed with 4% formaldehyde (10min).



Flow cytometry overlay histogram showing HeLa cells stained with **ab209446** (red line). The cells were fixed with 4% formaldehyde (10 min) and then permeabilized with 90% Methanol for 30 min at -20°C. The cells were incubated in 1x PBS containing 10% normal goat serum to block non-specific protein-protein interaction followed by the antibody (**ab209446**) ( $1 \times 10^6$  in 100µL at 0.01µg/mL, 0.1µg/mL, 1µg/mL (1/50000, 1/5000, 1/500)) for 30 min at 22°C.

Isotype control antibody (black line) was used at the same concentration and conditions as the primary antibody. Unlabelled sample (blue line) was also used as a control.

Acquisition of >5000 events were collected using a 50 mW Yellow/Green laser (561nm) and 586/15 bandpass filter.



Overlay histogram showing HeLa cells stained with **ab208741** (red line). The cells were fixed with 4% formaldehyde (10 min) and then permeabilized with 0.1% PBS-Triton X-100 for 15 min. The cells were then incubated in 1x PBS / 10% normal goat serum to block non-specific protein-protein interactions followed by the antibody (**ab208741**, 1/500 dilution) for 30 min at 22°C.

Isotype control antibody (black line) was rabbit IgG monoclonal [EPR25A] (ab209478) used at the same concentration and conditions as the primary antibody. Unlabelled sample (blue line) was also used as a control.

Acquisition of >5,000 events were collected using a 20 mW Solid State Blue Laser (488nm) and 585/40 bandpass filter.

Why choose a recombinant antibody?

|  |  |
|--|--|
| <p><b>Research with confidence</b><br/>Consistent and reproducible results</p> | <p><b>Long-term and scalable supply</b><br/>Recombinant technology</p> |
| <p><b>Success from the first experiment</b><br/>Confirmed specificity</p>      | <p><b>Ethical standards compliant</b><br/>Animal-free production</p>   |

PE Rabbit IgG, monoclonal [EPR25A] - Isotype Control (ab209478)

### **Our Abpromise to you: Quality guaranteed and expert technical support**

---

- Replacement or refund for products not performing as stated on the datasheet
- Valid for 12 months from date of delivery
- Response to your inquiry within 24 hours
- We provide support in Chinese, English, French, German, Japanese and Spanish
- Extensive multi-media technical resources to help you
- We investigate all quality concerns to ensure our products perform to the highest standards

If the product does not perform as described on this datasheet, we will offer a refund or replacement. For full details of the Abpromise, please visit <https://www.abcam.com/abpromise> or contact our technical team.

### **Terms and conditions**

---

- Guarantee only valid for products bought direct from Abcam or one of our authorized distributors