


Product datasheet

PE Anti-ROCK2 + ROCK1 antibody [EP786Y] ab224972

Recombinant RabMAb

3 Images

Overview

Product name	PE Anti-ROCK2 + ROCK1 antibody [EP786Y]
Description	PE Rabbit monoclonal [EP786Y] to ROCK2 + ROCK1
Host species	Rabbit
Conjugation	PE. Ex: 488nm, Em: 575nm
Specificity	This antibody recognizes both the cleaved C-terminus of ROCK 1 (30 kDa) and full length protein (158 kDa). The immunogen used for this product shares 83% homology with ROCK2.
Tested applications	Suitable for: Flow Cyt (Intra), WB
Species reactivity	Reacts with: Human Predicted to work with: Mouse, Rat 
Immunogen	Synthetic peptide. This information is proprietary to Abcam and/or its suppliers.
Positive control	Flow Cyt (intra): HeLa cells.
General notes	<p>This product is a recombinant monoclonal antibody, which offers several advantages including:</p> <ul style="list-style-type: none"> - High batch-to-batch consistency and reproducibility - Improved sensitivity and specificity - Long-term security of supply - Animal-free production <p>For more information see here.</p> <p>Our RabMAb[®] technology is a patented hybridoma-based technology for making rabbit monoclonal antibodies. For details on our patents, please refer to RabMAb[®] patents.</p>

Properties

Form	Liquid
Storage instructions	Shipped at 4°C. Upon delivery aliquot. Store at +4°C. Do Not Freeze. Store In the Dark.
Storage buffer	pH: 7.4 Preservative: 0.02% Sodium azide Constituents: 1% BSA, PBS
Purity	Protein A purified
Clonality	Monoclonal

Clone number EP786Y

Isotype IgG

Applications

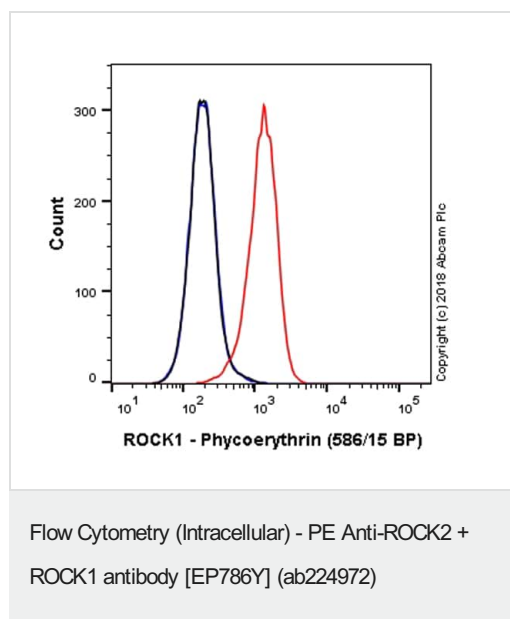
The Abpromise guarantee Our **Abpromise guarantee** covers the use of ab224972 in the following tested applications. The application notes include recommended starting dilutions; optimal dilutions/concentrations should be determined by the end user.

Application	Abreviews	Notes
Flow Cyt (Intra)		1/1000.
WB		1/20000.

Target

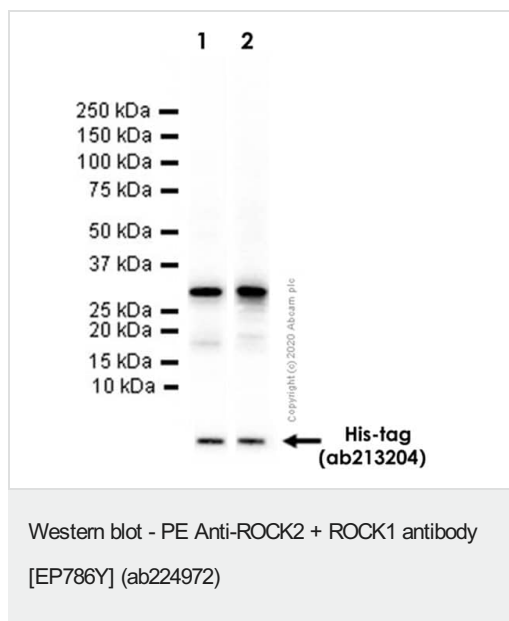
Cellular localization ROCK2: Cytoplasm. Cell membrane. Cytoplasmic, and associated with actin microfilaments and the plasma membrane. ROCK1: Cytoplasm. Cytoplasm, cytoskeleton, microtubule organizing center, centrosome, centriole. Golgi apparatus membrane. Cell projection, bleb. Cytoplasm, cytoskeleton. Cell membrane. Cell projection, lamellipodium. Cell projection, ruffle. Associated with the mother centriole and an intercentriolar linker. Colocalizes with ITGB1BP1 and ITGB1 at the cell membrane predominantly in lamellipodia and membrane ruffles, but also in retraction fibers. Localizes at the cell membrane in an ITGB1BP1-dependent manner (By similarity). A small proportion is associated with Golgi membranes.

Images



Overlay histogram showing HeLa cells stained with ab224972 (red line). The cells were fixed with 80% methanol (5 min) and then permeabilized with 0.1% PBS-Triton X-100 for 15 min. The cells were then incubated in 1x PBS / 10% normal goat serum to block non-specific protein-protein interactions followed by the antibody (ab224972, 1/1000 dilution) for 30 min at 22°C. Isotype control antibody (black line) was Rabbit IgG (monoclonal) Phycoerythrin (**ab209478**) used at the same concentration and conditions as the primary antibody. Unlabelled sample (blue line) was also used as a control.

Acquisition of >5,000 events were collected using a 50 mW Yellow/Green laser (561nm) and 586/15 bandpass filter.



All lanes : Anti-ROCK2 + ROCK1 antibody [EP786Y] ([ab45171](#)) at 1/1000 dilution

Lane 1 : Recombinant Human ROCK1 protein (aa 1114 to 1354) (30 kDa)

Lane 2 : Recombinant Human ROCK2 protein (aa 1132 to 1388) (30 kDa)

Secondary

All lanes : Goat Anti-Rabbit IgG H&L (HRP) ([ab97051](#)) at 1/20000 dilution

Observed band size: 30 kDa

This data was developed using [ab45171](#), the same antibody clone in a different buffer formulation.

Loading control: Anti-6X His tag® antibody [EPR20547] ([ab213204](#))

Blocking buffer and concentration: 5% NFDM/TBST

Exposure Times:

Lane 1: 3 seconds

Lane 2: 7 seconds

Why choose a recombinant antibody?

 <p>Research with confidence Consistent and reproducible results</p>	 <p>Long-term and scalable supply Recombinant technology</p>
 <p>Success from the first experiment Confirmed specificity</p>	 <p>Ethical standards compliant Animal-free production</p>

PE Anti-ROCK2 + ROCK1 antibody [EP786Y] (ab224972)

Please note: All products are "FOR RESEARCH USE ONLY. NOT FOR USE IN DIAGNOSTIC PROCEDURES"

Our Abpromise to you: Quality guaranteed and expert technical support

- Replacement or refund for products not performing as stated on the datasheet
- Valid for 12 months from date of delivery
- Response to your inquiry within 24 hours

- We provide support in Chinese, English, French, German, Japanese and Spanish
- Extensive multi-media technical resources to help you
- We investigate all quality concerns to ensure our products perform to the highest standards

If the product does not perform as described on this datasheet, we will offer a refund or replacement. For full details of the Abpromise, please visit <https://www.abcam.com/abpromise> or contact our technical team.

Terms and conditions

- Guarantee only valid for products bought direct from Abcam or one of our authorized distributors