

Product datasheet

PE Anti-SIGLEC5 antibody [1A5] ab240998

1 Image

Overview

Product name	PE Anti-SIGLEC5 antibody [1A5]
Description	PE Mouse monoclonal [1A5] to SIGLEC5
Host species	Mouse
Conjugation	PE. Ex: 488nm, Em: 575nm
Tested applications	Suitable for: Flow Cyt
Species reactivity	Reacts with: Human
Immunogen	Fusion protein (Fc-tag) corresponding to Human SIGLEC5 (extracellular). Fusion protein composed of human CD170 extracellular domain and Fc region of human IgG1 Database link: O15389
Positive control	Flow Cyt: Human peripheral blood cells.
General notes	<p>The Life Science industry has been in the grips of a reproducibility crisis for a number of years. Abcam is leading the way in addressing this with our range of recombinant monoclonal antibodies and knockout edited cell lines for gold-standard validation. Please check that this product meets your needs before purchasing.</p> <p>If you have any questions, special requirements or concerns, please send us an inquiry and/or contact our Support team ahead of purchase. Recommended alternatives for this product can be found below, along with publications, customer reviews and Q&As</p>

Properties

Form	Liquid
Storage instructions	Shipped at 4°C. Store at +4°C. Store In the Dark.
Storage buffer	pH: 7.4 Preservative: 0.0975% Sodium azide Constituent: PBS
Purity	Size exclusion
Purification notes	Purified antibody is conjugated with R-Phycoerythrin (PE) under optimum conditions. The conjugate is purified by size-exclusion chromatography and adjusted for direct use. No reconstitution is necessary.
Clonality	Monoclonal

Clone number	1A5
Isotype	IgG1

Applications

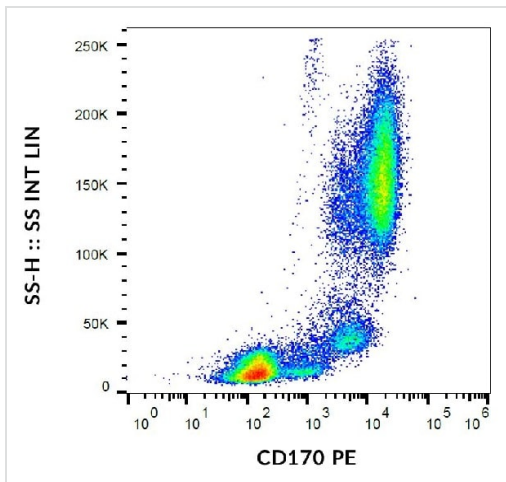
The Abpromise guarantee Our **Abpromise guarantee** covers the use of ab240998 in the following tested applications. The application notes include recommended starting dilutions; optimal dilutions/concentrations should be determined by the end user.

Application	Abreviews	Notes
Flow Cyt		Use 10µl for 10 ⁶ cells. (or 100 µl of whole blood).

Target

Function	Putative adhesion molecule that mediates sialic-acid dependent binding to cells. Binds equally to alpha-2,3-linked and alpha-2,6-linked sialic acid. The sialic acid recognition site may be masked by cis interactions with sialic acids on the same cell surface.
Tissue specificity	Expressed by monocytic/myeloid lineage cells. Found at high levels in peripheral blood leukocytes, spleen, bone marrow and at lower levels in lymph node, lung, appendix, placenta, pancreas and thymus. Expressed by monocytes and neutrophils but absent from leukemic cell lines representing early stages of myelomonocytic differentiation.
Sequence similarities	Belongs to the immunoglobulin superfamily. SIGLEC (sialic acid binding Ig-like lectin) family. Contains 2 Ig-like C2-type (immunoglobulin-like) domains. Contains 1 Ig-like V-type (immunoglobulin-like) domain.
Domain	Contains 1 copy of a cytoplasmic motif that is referred to as the immunoreceptor tyrosine-based inhibitor motif (ITIM). This motif is involved in modulation of cellular responses. The phosphorylated ITIM motif can bind the SH2 domain of several SH2-containing phosphatases.
Cellular localization	Membrane.

Images



Flow Cytometry - PE Anti-SIGLEC5 antibody [1A5]
(ab240998)

Flow cytometric analysis of human peripheral blood cells labeling SIGLEC5 with ab240998. Surface staining.

Please note: All products are "FOR RESEARCH USE ONLY. NOT FOR USE IN DIAGNOSTIC PROCEDURES"

Our Abpromise to you: Quality guaranteed and expert technical support

- Replacement or refund for products not performing as stated on the datasheet
- Valid for 12 months from date of delivery
- Response to your inquiry within 24 hours
- We provide support in Chinese, English, French, German, Japanese and Spanish
- Extensive multi-media technical resources to help you
- We investigate all quality concerns to ensure our products perform to the highest standards

If the product does not perform as described on this datasheet, we will offer a refund or replacement. For full details of the Abpromise, please visit <https://www.abcam.com/abpromise> or contact our technical team.

Terms and conditions

- Guarantee only valid for products bought direct from Abcam or one of our authorized distributors