

Product datasheet

PE Anti-STRO1 antibody [STRO-1] ab190282

[4 References](#) [1 Image](#)

Overview

Product name	PE Anti-STRO1 antibody [STRO-1]
Description	PE Mouse monoclonal [STRO-1] to STRO1
Host species	Mouse
Conjugation	PE. Ex: 488nm, Em: 575nm
Tested applications	Suitable for: Flow Cyt
Species reactivity	Reacts with: Human
Immunogen	Tissue, cells or virus corresponding to Human STRO1. (Human CD34 positive bone marrow cells).
General notes	<p>The Life Science industry has been in the grips of a reproducibility crisis for a number of years. Abcam is leading the way in addressing this with our range of recombinant monoclonal antibodies and knockout edited cell lines for gold-standard validation. Please check that this product meets your needs before purchasing.</p> <p>If you have any questions, special requirements or concerns, please send us an inquiry and/or contact our Support team ahead of purchase. Recommended alternatives for this product can be found below, along with publications, customer reviews and Q&As</p>

Properties

Form	Liquid
Storage instructions	Shipped at 4°C. Store at +4°C. Store In the Dark.
Storage buffer	<p>pH: 8.0</p> <p>Preservative: 0.097% Sodium azide</p> <p>Constituents: 99% Tris buffered saline, 0.2% BSA</p>
Purity	Size exclusion
Purification notes	Purified antibody is conjugated with R-Phycoerythrin (PE) under optimum conditions. The conjugate is purified by size-exclusion chromatography.
Clonality	Monoclonal
Clone number	STRO-1
Isotype	IgM

Applications

The Abpromise guarantee

Our **Abpromise guarantee** covers the use of ab190282 in the following tested applications.

The application notes include recommended starting dilutions; optimal dilutions/concentrations should be determined by the end user.

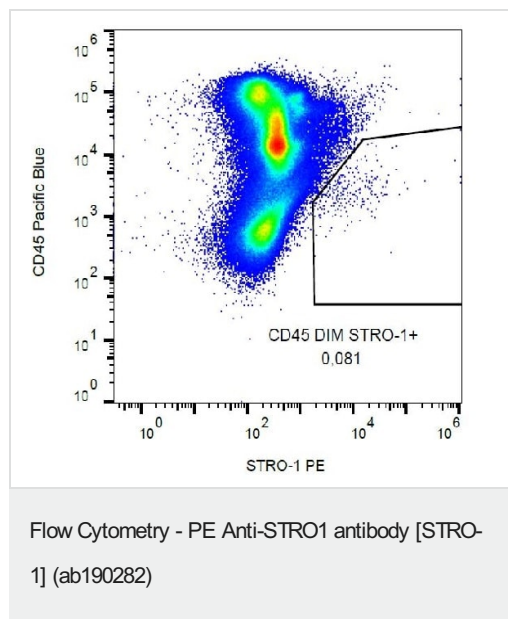
Application	Abreviews	Notes
Flow Cyt		Use a concentration of 1 - 5 µg/ml. ab154448 - Mouse monoclonal IgM, is suitable for use as an isotype control with this antibody.

Target

Relevance

STRO1 is a cell surface antigen expressed by bone marrow mesenchymal stromal cells and nucleated erythroid precursors, but not by committed hematopoietic progenitors.

Images



Flow Cytometry analysis of human peripheral blood labeling STRO1 with ab190282.

Please note: All products are "FOR RESEARCH USE ONLY. NOT FOR USE IN DIAGNOSTIC PROCEDURES"

Our Abpromise to you: Quality guaranteed and expert technical support

- Replacement or refund for products not performing as stated on the datasheet
- Valid for 12 months from date of delivery
- Response to your inquiry within 24 hours
- We provide support in Chinese, English, French, German, Japanese and Spanish
- Extensive multi-media technical resources to help you
- We investigate all quality concerns to ensure our products perform to the highest standards

If the product does not perform as described on this datasheet, we will offer a refund or replacement. For full details of the Abpromise, please visit <https://www.abcam.com/abpromise> or contact our technical team.

Terms and conditions

- Guarantee only valid for products bought direct from Abcam or one of our authorized distributors