

## Product datasheet

### PE Anti-TALLA-1 antibody [B2D] ab252551

[1 Image](#)

#### Overview

---

<b>Product name</b>	PE Anti-TALLA-1 antibody [B2D]
<b>Description</b>	PE Mouse monoclonal [B2D] to TALLA-1
<b>Host species</b>	Mouse
<b>Conjugation</b>	PE. Ex: 488nm, Em: 575nm
<b>Tested applications</b>	<b>Suitable for:</b> Flow Cyt
<b>Species reactivity</b>	<b>Reacts with:</b> Human
<b>Immunogen</b>	Tissue, cells or virus corresponding to TALLA-1. Human T-ALL cell line THP-6.
<b>Positive control</b>	Flow cyt: Jurkat cells.
<b>General notes</b>	<p>The Life Science industry has been in the grips of a reproducibility crisis for a number of years. Abcam is leading the way in addressing this with our range of recombinant monoclonal antibodies and knockout edited cell lines for gold-standard validation. Please check that this product meets your needs before purchasing.</p> <p>If you have any questions, special requirements or concerns, please send us an inquiry and/or contact our Support team ahead of purchase. Recommended alternatives for this product can be found below, along with publications, customer reviews and Q&amp;As</p>

#### Properties

---

<b>Form</b>	Liquid
<b>Storage instructions</b>	Shipped at 4°C. Store at +4°C. Store In the Dark.
<b>Storage buffer</b>	pH: 7.4 Preservative: 0.0975% Sodium azide Constituent: PBS
<b>Purity</b>	Size exclusion
<b>Purification notes</b>	The purified antibody is conjugated with R-Phycoerythrin (PE) under optimum conditions. The conjugate is purified by size-exclusion chromatography and adjusted for direct use. No reconstitution is necessary.
<b>Clonality</b>	Monoclonal
<b>Clone number</b>	B2D
<b>Isotype</b>	IgG1

## Applications

### The Abpromise guarantee

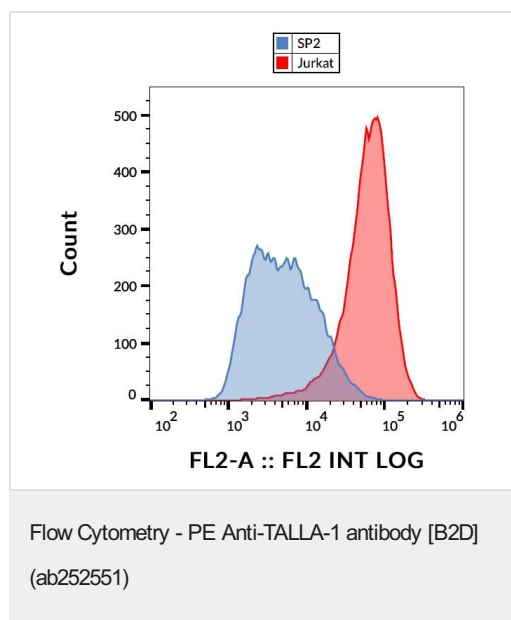
Our **Abpromise guarantee** covers the use of ab252551 in the following tested applications.

The application notes include recommended starting dilutions; optimal dilutions/concentrations should be determined by the end user.

Application	Abreviews	Notes
Flow Cyt		Use 10µl for 10 <sup>6</sup> cells. OR 10 µl reagent / 100 µl of whole blood.

## Target

## Images



Surface staining of TALLA-1 in Jurkat (Human T cell leukemia cell line from peripheral blood) cells with ab252551.

**Please note:** All products are "FOR RESEARCH USE ONLY. NOT FOR USE IN DIAGNOSTIC PROCEDURES"

## Our Abpromise to you: Quality guaranteed and expert technical support

- Replacement or refund for products not performing as stated on the datasheet
- Valid for 12 months from date of delivery
- Response to your inquiry within 24 hours
- We provide support in Chinese, English, French, German, Japanese and Spanish
- Extensive multi-media technical resources to help you
- We investigate all quality concerns to ensure our products perform to the highest standards

If the product does not perform as described on this datasheet, we will offer a refund or replacement. For full details of the Abpromise, please visit <https://www.abcam.com/abpromise> or contact our technical team.

## Terms and conditions

---

- Guarantee only valid for products bought direct from Abcam or one of our authorized distributors