

PE Anti-TIM 4 antibody [RMT4-54] ab241098

[1 Image](#)

Overview

Product name	PE Anti-TIM 4 antibody [RMT4-54]
Description	PE Rat monoclonal [RMT4-54] to TIM 4
Host species	Rat
Conjugation	PE. Ex: 488nm, Em: 575nm
Tested applications	Suitable for: Flow Cyt
Species reactivity	Reacts with: Mouse
Immunogen	The details of the immunogen for this antibody are not available.
Positive control	Flow Cyt: C57Bl/6 resident peritoneal exudate cells.
General notes	<p>The Life Science industry has been in the grips of a reproducibility crisis for a number of years. Abcam is leading the way in addressing this with our range of recombinant monoclonal antibodies and knockout edited cell lines for gold-standard validation. Please check that this product meets your needs before purchasing.</p> <p>If you have any questions, special requirements or concerns, please send us an inquiry and/or contact our Support team ahead of purchase. Recommended alternatives for this product can be found below, along with publications, customer reviews and Q&As</p>

Properties

Form	Liquid
Storage instructions	Shipped at 4°C. Store at +4°C. Store In the Dark.
Storage buffer	<p>pH: 7.20</p> <p>Preservative: 0.09% Sodium azide</p> <p>Constituents: 0.14% Monobasic dihydrogen potassium phosphate, 0.87% Sodium chloride, 0.1% Gelatin</p>
Purity	Affinity purified
Purification notes	Purified from tissue culture supernatant. Purified antibody was conjugated under optimal conditions, with unreacted dye removed from the preparation.
Clonality	Monoclonal
Clone number	RMT4-54
Isotype	IgG2a

Light chain type

kappa

Applications

The Abpromise guarantee

Our **Abpromise guarantee** covers the use of ab241098 in the following tested applications.

The application notes include recommended starting dilutions; optimal dilutions/concentrations should be determined by the end user.

Application	Abreviews	Notes
Flow Cyt		Use at an assay dependent concentration. Use 0.125 µg.

Target

Function

Phosphatidylserine receptor that enhances the engulfment of apoptotic cells. Involved in regulating T-cell proliferation and lymphotoxin signaling. Ligand for HAVCR1/TIMD1.

Sequence similarities

Belongs to the immunoglobulin superfamily. TIM family.
Contains 1 Ig-like V-type (immunoglobulin-like) domain.

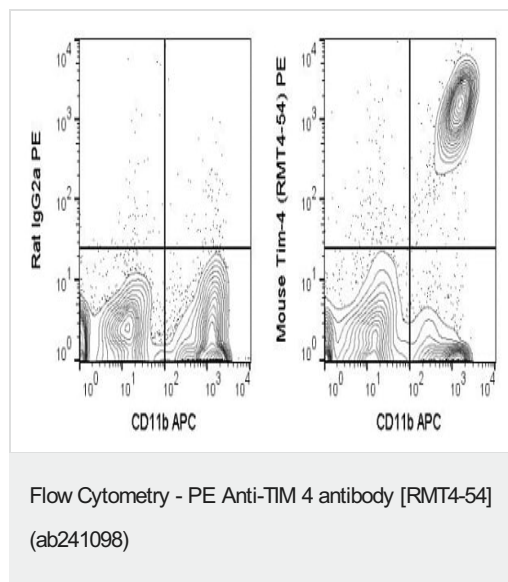
Domain

Recognizes phosphatidyl serine via its immunoglobulin domain.

Cellular localization

Membrane.

Images



Flow cytometric analysis of C57Bl/6 resident peritoneal exudate cells stained with APC Anti-Mouse CD11b and 0.125 µg ab241098 (right panel) or 0.125 µg Phycoerythrin Rat IgG2a (left panel).

Please note: All products are "FOR RESEARCH USE ONLY. NOT FOR USE IN DIAGNOSTIC PROCEDURES"

Our Abpromise to you: Quality guaranteed and expert technical support

- Replacement or refund for products not performing as stated on the datasheet
- Valid for 12 months from date of delivery

- Response to your inquiry within 24 hours
- We provide support in Chinese, English, French, German, Japanese and Spanish
- Extensive multi-media technical resources to help you
- We investigate all quality concerns to ensure our products perform to the highest standards

If the product does not perform as described on this datasheet, we will offer a refund or replacement. For full details of the Abpromise, please visit <https://www.abcam.com/abpromise> or contact our technical team.

Terms and conditions

- Guarantee only valid for products bought direct from Abcam or one of our authorized distributors