


## Product datasheet

# PE Anti-TOMM20 antibody [EPR15581-54] ab225342

Recombinant **RabMAb**

[2 Images](#)

### Overview

|                            |   |
|----------------------------|---|
| <b>Product name</b>        | PE Anti-TOMM20 antibody [EPR15581-54]   |
| <b>Description</b>         | PE Rabbit monoclonal [EPR15581-54] to TOMM20  |
| <b>Host species</b>        | Rabbit  |
| <b>Conjugation</b>         | PE. Ex: 488nm, Em: 575nm  |
| <b>Tested applications</b> | <b>Suitable for:</b> Flow Cyt (Intra)   |
| <b>Species reactivity</b>  | <b>Reacts with:</b> Human<br><b>Predicted to work with:</b> Mouse, Rat   |
| <b>Immunogen</b>           | Recombinant fragment within Human TOMM20 aa 1 to the C-terminus. The exact immunogen sequence used to generate this antibody is proprietary information. If additional detail on the immunogen is needed to determine the suitability of the antibody for your needs, please <b><u>contact</u></b> our Scientific Support team to discuss your requirements.<br>Database link: <a href="#">Q15388</a>   |
| <b>Positive control</b>    | Flow Cyt (intra): HeLa cells  |
| <b>General notes</b>       | This product is a recombinant monoclonal antibody, which offers several advantages including: <ul style="list-style-type: none"><li>- High batch-to-batch consistency and reproducibility</li><li>- Improved sensitivity and specificity</li><li>- Long-term security of supply</li><li>- Animal-free production</li></ul> For more information <a href="#">see here</a> .<br>Our RabMAb <sup>®</sup> technology is a patented hybridoma-based technology for making rabbit monoclonal antibodies. For details on our patents, please refer to <a href="#">RabMAb<sup>®</sup> patents</a> . |

### Properties

|                             |   |
|-----------------------------|---|
| <b>Form</b>                 | Liquid  |
| <b>Storage instructions</b> | Shipped at 4°C. Upon delivery aliquot. Store at +4°C. Do Not Freeze. Store In the Dark. |
| <b>Storage buffer</b>       | pH: 7.4<br>Preservative: 0.02% Sodium azide<br>Constituents: 1% BSA, PBS                |
| <b>Purity</b>               | Protein A purified  |

|              |             |
|--------------|-------------|
| Clonality    | Monoclonal  |
| Clone number | EPR15581-54 |
| Isotype      | IgG         |

## Applications

**The Abpromise guarantee** Our **Abpromise guarantee** covers the use of ab225342 in the following tested applications. The application notes include recommended starting dilutions; optimal dilutions/concentrations should be determined by the end user.

| Application      | Abreviews | Notes   |
|------------------|-----------|---|
| Flow Cyt (Intra) |           | 1/1000.<br>The cellular localisation of this product has been verified in ICC/IF. |

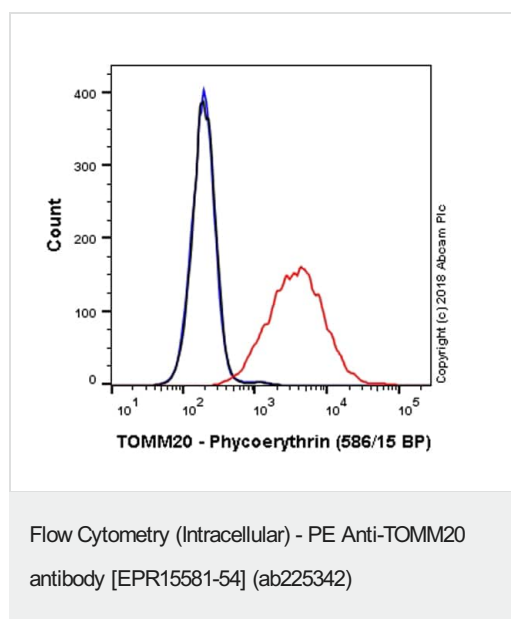
## Target

**Function** Central component of the receptor complex responsible for the recognition and translocation of cytosolically synthesized mitochondrial preproteins. Together with TOM22 functions as the transit peptide receptor at the surface of the mitochondrion outer membrane and facilitates the movement of preproteins into the TOM40 translocation pore.

**Sequence similarities** Belongs to the Tom20 family.

**Cellular localization** Mitochondrion outer membrane.

## Images



Overlay histogram showing HeLa cells stained with ab225342 (red line). The cells were fixed with 4% formaldehyde (10 min) and then permeabilized with 0.1% PBS-Triton X-100 for 15 min. The cells were then incubated in 1x PBS / 10% normal goat serum to block non-specific protein-protein interactions followed by the antibody (ab225342, 1/1000 dilution) for 30 min at 22°C.

Isotype control antibody (black line) was Rabbit IgG (monoclonal) Phycoerythrin (**ab209478**) used at the same concentration and conditions as the primary antibody. Unlabelled sample (blue line) was also used as a control.

Acquisition of >5,000 events were collected using a 50 mW Yellow/Green laser (561nm) and 586/15 bandpass filter.

### Why choose a recombinant antibody?



**Research with confidence**  
Consistent and reproducible results



**Long-term and scalable supply**  
Recombinant technology



**Success from the first experiment**  
Confirmed specificity



**Ethical standards compliant**  
Animal-free production

PE Anti-TOMM20 antibody [EPR15581-54]  
(ab225342)

**Please note:** All products are "FOR RESEARCH USE ONLY. NOT FOR USE IN DIAGNOSTIC PROCEDURES"

### Our Abpromise to you: Quality guaranteed and expert technical support

---

- Replacement or refund for products not performing as stated on the datasheet
- Valid for 12 months from date of delivery
- Response to your inquiry within 24 hours
- We provide support in Chinese, English, French, German, Japanese and Spanish
- Extensive multi-media technical resources to help you
- We investigate all quality concerns to ensure our products perform to the highest standards

If the product does not perform as described on this datasheet, we will offer a refund or replacement. For full details of the Abpromise, please visit <https://www.abcam.com/abpromise> or contact our technical team.

### Terms and conditions

---

- Guarantee only valid for products bought direct from Abcam or one of our authorized distributors