

Product datasheet

Anti-PECI/ECI2 antibody ab235322

[1 References](#) [2 Images](#)

Overview

Product name	Anti-PECI/ECI2 antibody
Description	Rabbit polyclonal to PECI/ECI2
Host species	Rabbit
Tested applications	Suitable for: WB, IHC-P
Species reactivity	Reacts with: Mouse, Rat, Human
Immunogen	Recombinant fragment corresponding to Human PECI/ECI2 aa 100-250. Database link: O75521 Run BLAST with Run BLAST with
Positive control	WB: Rat heart lysate; Mouse heart and liver lysates. IHC-P: Human liver tissue.
General notes	<p>The Life Science industry has been in the grips of a reproducibility crisis for a number of years. Abcam is leading the way in addressing this with our range of recombinant monoclonal antibodies and knockout edited cell lines for gold-standard validation. Please check that this product meets your needs before purchasing.</p> <p>If you have any questions, special requirements or concerns, please send us an inquiry and/or contact our Support team ahead of purchase. Recommended alternatives for this product can be found below, along with publications, customer reviews and Q&As</p>

Properties

Form	Liquid
Storage instructions	Shipped at 4°C. Store at +4°C short term (1-2 weeks). Upon delivery aliquot. Store at -20°C long term. Avoid freeze / thaw cycle.
Storage buffer	pH: 7.40 Preservative: 0.03% Proclin 300 Constituents: PBS, 50% Glycerol (glycerin, glycerine)
Purity	Protein G purified
Purification notes	Purity >95%
Clonality	Polyclonal
Isotype	IgG

Applications

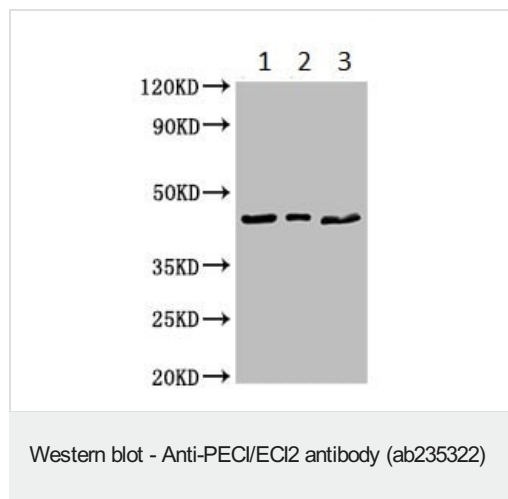
The Abpromise guarantee Our **Abpromise guarantee** covers the use of ab235322 in the following tested applications. The application notes include recommended starting dilutions; optimal dilutions/concentrations should be determined by the end user.

Application	Abreviews	Notes
WB		1/500 - 1/5000. Predicted molecular weight: 44 kDa.
IHC-P		1/20 - 1/200.

Target

Function	Able to isomerize both 3-cis and 3-trans double bonds into the 2-trans form in a range of enoyl-CoA species. Has a preference for 3-trans substrates.
Tissue specificity	Abundant in heart, skeletal muscle and liver. Expressed in CD34(+) T-cells and CD34(+) bone marrow cells.
Sequence similarities	In the C-terminal section; belongs to the enoyl-CoA hydratase/isomerase family. Contains 1 ACB (acyl-CoA-binding) domain.
Cellular localization	Mitochondrion and Peroxisome matrix.

Images



All lanes : Anti-PEC/ECI2 antibody (ab235322) at 1/500 dilution

Lane 1 : Rat heart tissue lysate

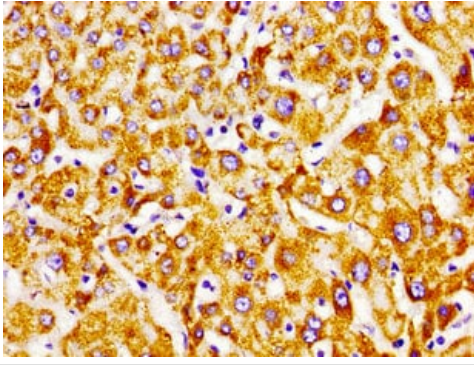
Lane 2 : Mouse heart tissue lysate

Lane 3 : Mouse liver tissue lysate

Secondary

All lanes : Goat polyclonal to rabbit IgG at 1/50000 dilution

Predicted band size: 44 kDa



Paraffin-embedded human liver tissue stained for PECI/ECI2 using ab235322 at 1/100 dilution in immunohistochemical analysis.

Immunohistochemistry (Formalin/PFA-fixed paraffin-embedded sections) - Anti-PECI/ECI2 antibody (ab235322)

Please note: All products are "FOR RESEARCH USE ONLY. NOT FOR USE IN DIAGNOSTIC PROCEDURES"

Our Abpromise to you: Quality guaranteed and expert technical support

- Replacement or refund for products not performing as stated on the datasheet
- Valid for 12 months from date of delivery
- Response to your inquiry within 24 hours
- We provide support in Chinese, English, French, German, Japanese and Spanish
- Extensive multi-media technical resources to help you
- We investigate all quality concerns to ensure our products perform to the highest standards

If the product does not perform as described on this datasheet, we will offer a refund or replacement. For full details of the Abpromise, please visit <https://www.abcam.com/abpromise> or contact our technical team.

Terms and conditions

- Guarantee only valid for products bought direct from Abcam or one of our authorized distributors