

PE/Cy5® Anti-CD55 antibody [MEM118] ab232907

[1 Image](#)

Overview

Product name	PE/Cy5® Anti-CD55 antibody [MEM118]
Description	PE/Cy5® Mouse monoclonal [MEM118] to CD55
Host species	Mouse
Conjugation	PE/Cy5®. Ex: 496nm, Em: 670nm
Tested applications	Suitable for: Flow Cyt
Species reactivity	Reacts with: Human
Immunogen	Tissue, cells or virus corresponding to CD55. HPB-ALL human T cell line.
Positive control	Flow Cytometry: Human peripheral blood cells.
General notes	<p>This product or portions thereof is manufactured under license from Carnegie Mellon University under U.S. Patent Number 5, 268, 486 and related patents. Cy® and CyDye® are trademarks of Cytiva.</p> <p>The Life Science industry has been in the grips of a reproducibility crisis for a number of years. Abcam is leading the way in addressing this with our range of recombinant monoclonal antibodies and knockout edited cell lines for gold-standard validation. Please check that this product meets your needs before purchasing.</p> <p>If you have any questions, special requirements or concerns, please send us an inquiry and/or contact our Support team ahead of purchase. Recommended alternatives for this product can be found below, along with publications, customer reviews and Q&As</p>

Properties

Form	Liquid
Storage instructions	Shipped at 4°C. Store at +4°C. Store In the Dark.
Storage buffer	<p>pH: 8.0</p> <p>Preservative: 0.0975% Sodium azide</p> <p>Constituent: Tris buffered saline</p>
Purity	Size exclusion
Clonality	Monoclonal
Clone number	MEM118
Isotype	IgM

Applications

The Abpromise guarantee

Our **Abpromise guarantee** covers the use of ab232907 in the following tested applications.

The application notes include recommended starting dilutions; optimal dilutions/concentrations should be determined by the end user.

Application	Abreviews	Notes
Flow Cyt		Use 4µl for 10 ⁶ cells.

Target

Function

This protein recognizes C4b and C3b fragments that condense with cell-surface hydroxyl or amino groups when nascent C4b and C3b are locally generated during C4 and c3 activation. Interaction of daf with cell-associated C4b and C3b polypeptides interferes with their ability to catalyze the conversion of C2 and factor B to enzymatically active C2a and Bb and thereby prevents the formation of C4b2a and C3bBb, the amplification convertases of the complement cascade.

Tissue specificity

Expressed on the plasma membranes of all cell types that are in intimate contact with plasma complement proteins. It is also found on the surfaces of epithelial cells lining extracellular compartments, and variants of the molecule are present in body fluids and in extracellular matrix.

Sequence similarities

Belongs to the receptors of complement activation (RCA) family.
Contains 4 Sushi (CCP/SCR) domains.

Domain

The first Sushi domain (SCR1) is not necessary for function. SCR2 and SCR4 provide the proper conformation for the active site on SCR3.

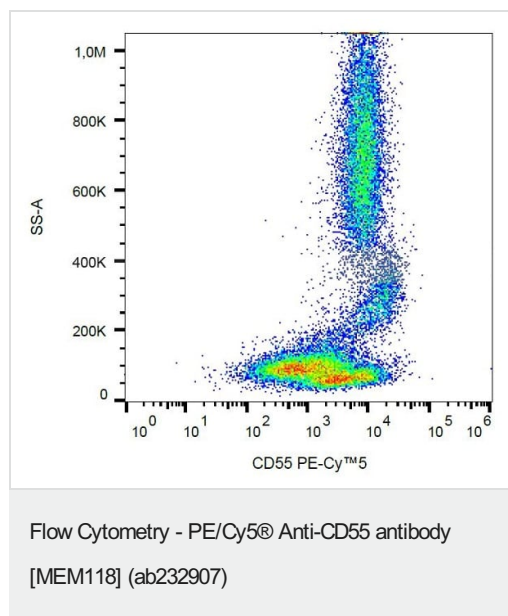
Post-translational modifications

The Ser/Thr-rich domain is heavily O-glycosylated.

Cellular localization

Cell membrane.

Images



Surface staining of human peripheral blood cells labeling CD55 with ab232907 (4 µl reagent / 100 µl of whole blood). Gating strategy - leukocyte gate.

Please note: All products are "FOR RESEARCH USE ONLY. NOT FOR USE IN DIAGNOSTIC PROCEDURES"

Our Abpromise to you: Quality guaranteed and expert technical support

- Replacement or refund for products not performing as stated on the datasheet
- Valid for 12 months from date of delivery
- Response to your inquiry within 24 hours
- We provide support in Chinese, English, French, German, Japanese and Spanish
- Extensive multi-media technical resources to help you
- We investigate all quality concerns to ensure our products perform to the highest standards

If the product does not perform as described on this datasheet, we will offer a refund or replacement. For full details of the Abpromise, please visit <https://www.abcam.com/abpromise> or contact our technical team.

Terms and conditions

- Guarantee only valid for products bought direct from Abcam or one of our authorized distributors