

Product datasheet

PE/Cy5® Anti-CD62L antibody [DREG-56] ab95540

★★★★★ [1 Abreviews](#) [2 References](#) [1 Image](#)

Overview

Product name	PE/Cy5® Anti-CD62L antibody [DREG-56]
Description	PE/Cy5® Mouse monoclonal [DREG-56] to CD62L
Host species	Mouse
Conjugation	PE/Cy5®. Ex: 496nm, Em: 670nm
Tested applications	Suitable for: Flow Cyt
Species reactivity	Reacts with: Human
Immunogen	Tissue, cells or virus corresponding to Human CD62L. PMA activated Human peripheral blood leukocytes.
Positive control	Human peripheral blood leukocytes.
General notes	<p>The Life Science industry has been in the grips of a reproducibility crisis for a number of years. Abcam is leading the way in addressing this with our range of recombinant monoclonal antibodies and knockout edited cell lines for gold-standard validation. Please check that this product meets your needs before purchasing.</p> <p>If you have any questions, special requirements or concerns, please send us an inquiry and/or contact our Support team ahead of purchase. Recommended alternatives for this product can be found below, along with publications, customer reviews and Q&As</p>

Properties

Form	Liquid
Storage instructions	Shipped at 4°C. Store at +4°C.
Storage buffer	pH: 7.20 Preservative: 0.09% Sodium azide Constituents: 0.2% BSA, 0.87% Sodium chloride, PBS
Purity	Protein G purified
Clonality	Monoclonal
Clone number	DREG-56
Isotype	IgG1
Light chain type	kappa

Applications

The Abpromise guarantee

Our **Abpromise guarantee** covers the use of ab95540 in the following tested applications.

The application notes include recommended starting dilutions; optimal dilutions/concentrations should be determined by the end user.

Application	Abreviews	Notes
Flow Cyt	★★★★★ (1)	Use 5µl for 10 ⁶ cells. ab67435 - Mouse monoclonal IgG1, is suitable for use as an isotype control with this antibody.

Target

Function

Cell surface adhesion protein. Mediates the adherence of lymphocytes to endothelial cells of high endothelial venules in peripheral lymph nodes. Promotes initial tethering and rolling of leukocytes in endothelia.

Tissue specificity

Expressed in B cell lines and T lymphocytes.

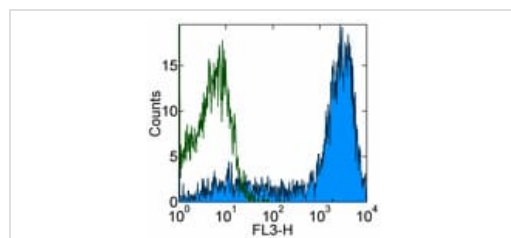
Sequence similarities

Belongs to the selectin/LECAM family.
Contains 1 C-type lectin domain.
Contains 1 EGF-like domain.
Contains 2 Sushi (CCP/SCR) domains.

Cellular localization

Membrane.

Images



Flow Cytometry - PE/Cy5® Anti-CD62L antibody
[DREG-56] (ab95540)

Staining of normal Human peripheral blood cells with PE-Cy5
Mouse IgG1 ? Isotype Control (open histogram) or ab95540 (filled
histogram).
Cells in the lymphocyte gate were used for analysis.

Please note: All products are "FOR RESEARCH USE ONLY. NOT FOR USE IN DIAGNOSTIC PROCEDURES"

Our Abpromise to you: Quality guaranteed and expert technical support

- Replacement or refund for products not performing as stated on the datasheet
- Valid for 12 months from date of delivery
- Response to your inquiry within 24 hours
- We provide support in Chinese, English, French, German, Japanese and Spanish

- Extensive multi-media technical resources to help you
- We investigate all quality concerns to ensure our products perform to the highest standards

If the product does not perform as described on this datasheet, we will offer a refund or replacement. For full details of the Abpromise, please visit <https://www.abcam.com/abpromise> or contact our technical team.

Terms and conditions

- Guarantee only valid for products bought direct from Abcam or one of our authorized distributors