

Product datasheet

PE/Cy5® Anti-CD80 antibody [2D10.4], prediluted ab155374

[1 References](#) [1 Image](#)

Overview

Product name	PE/Cy5® Anti-CD80 antibody [2D10.4], prediluted
Description	PE/Cy5® Mouse monoclonal [2D10.4] to CD80, prediluted
Host species	Mouse
Conjugation	PE/Cy5®. Ex: 496nm, Em: 670nm
Tested applications	Suitable for: Flow Cyt
Species reactivity	Reacts with: Human
Immunogen	The details of the immunogen for this antibody are not available.
Positive control	Normal Human peripheral blood cells.
General notes	<p>The Life Science industry has been in the grips of a reproducibility crisis for a number of years. Abcam is leading the way in addressing this with our range of recombinant monoclonal antibodies and knockout edited cell lines for gold-standard validation. Please check that this product meets your needs before purchasing.</p> <p>If you have any questions, special requirements or concerns, please send us an inquiry and/or contact our Support team ahead of purchase. Recommended alternatives for this product can be found below, along with publications, customer reviews and Q&As</p>

Properties

Form	Liquid
Storage instructions	Shipped at 4°C. Store at +4°C.
Storage buffer	pH: 7.20 Preservative: 0.09% Sodium azide Constituents: 99% PBS, 0.2% BSA
Purity	Protein G purified
Clonality	Monoclonal
Clone number	2D10.4
Isotype	IgG1
Light chain type	kappa

Applications

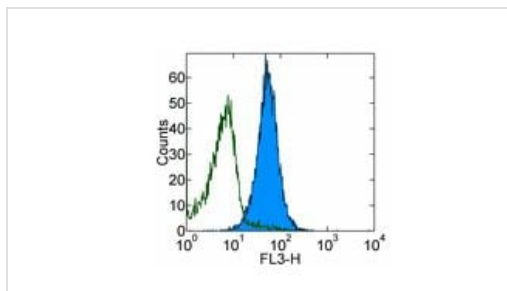
The Abpromise guarantee Our **Abpromise guarantee** covers the use of ab155374 in the following tested applications. The application notes include recommended starting dilutions; optimal dilutions/concentrations should be determined by the end user.

Application	Abreviews	Notes
Flow Cyt		Use 5µl for 10 ⁶ cells. ab67435 - Mouse monoclonal IgG1, is suitable for use as an isotype control with this antibody.

Target

Function	Involved in the costimulatory signal essential for T-lymphocyte activation. T-cell proliferation and cytokine production is induced by the binding of CD28 or CTLA-4 to this receptor.
Tissue specificity	Expressed on activated B-cells, macrophages and dendritic cells.
Sequence similarities	Contains 1 Ig-like C2-type (immunoglobulin-like) domain. Contains 1 Ig-like V-type (immunoglobulin-like) domain.
Cellular localization	Membrane.

Images



Flow Cytometry - PE/Cy5® Anti-CD80 antibody [2D10.4], prediluted (ab155374)

Flow Cytometric analysis of normal Human peripheral blood cells labeling CD80 with ab155374 (filled histogram) at 1 µg/test in 100 µl final volume or an equal amount of Mouse IgG1 kappa Isotype Control PE-Cy5 (open histogram). Cells in the lymphocyte gate were used for analysis.

Please note: All products are "FOR RESEARCH USE ONLY. NOT FOR USE IN DIAGNOSTIC PROCEDURES"

Our Abpromise to you: Quality guaranteed and expert technical support

- Replacement or refund for products not performing as stated on the datasheet
- Valid for 12 months from date of delivery
- Response to your inquiry within 24 hours
- We provide support in Chinese, English, French, German, Japanese and Spanish
- Extensive multi-media technical resources to help you
- We investigate all quality concerns to ensure our products perform to the highest standards

If the product does not perform as described on this datasheet, we will offer a refund or replacement. For full details of the Abpromise, please visit <https://www.abcam.com/abpromise> or contact our technical team.

Terms and conditions

- Guarantee only valid for products bought direct from Abcam or one of our authorized distributors