

Product datasheet

PE/Cy7® Anti-CD14 antibody [61D3], prediluted ab155360

[1 References](#) [1 Image](#)

Overview

Product name	PE/Cy7® Anti-CD14 antibody [61D3], prediluted
Description	PE/Cy7® Mouse monoclonal [61D3] to CD14, prediluted
Host species	Mouse
Conjugation	PE/Cy7®. Ex: 496nm, Em: 774nm
Tested applications	Suitable for: Flow Cyt
Species reactivity	Reacts with: Human
Immunogen	Tissue, cells or virus. This information is proprietary to Abcam and/or its suppliers.
Positive control	Normal Human peripheral blood cells.
General notes	<p>The Life Science industry has been in the grips of a reproducibility crisis for a number of years. Abcam is leading the way in addressing this with our range of recombinant monoclonal antibodies and knockout edited cell lines for gold-standard validation. Please check that this product meets your needs before purchasing.</p> <p>If you have any questions, special requirements or concerns, please send us an inquiry and/or contact our Support team ahead of purchase. Recommended alternatives for this product can be found below, along with publications, customer reviews and Q&As</p>

Properties

Form	Liquid
Storage instructions	Shipped at 4°C. Store at +4°C.
Storage buffer	pH: 7.2 Preservative: 0.09% Sodium azide Constituents: 0.2% BSA, 99% PBS
Purity	Protein G purified
Clonality	Monoclonal
Clone number	61D3
Isotype	IgG1
Light chain type	kappa

Applications

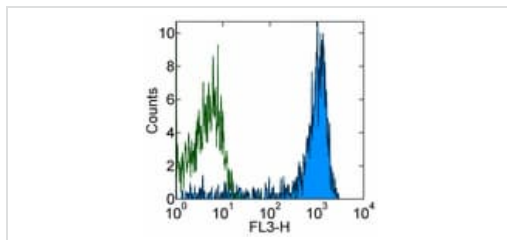
The Abpromise guarantee Our **Abpromise guarantee** covers the use of ab155360 in the following tested applications. The application notes include recommended starting dilutions; optimal dilutions/concentrations should be determined by the end user.

Application	Abreviews	Notes
Flow Cyt		Use 5µl for 10 ⁶ cells. ab154457 - Mouse monoclonal IgG1, is suitable for use as an isotype control with this antibody.

Target

Function	Cooperates with MD-2 and TLR4 to mediate the innate immune response to bacterial lipopolysaccharide (LPS). Acts via MyD88, TIRAP and TRAF6, leading to NF-kappa-B activation, cytokine secretion and the inflammatory response. Up-regulates cell surface molecules, including adhesion molecules.
Tissue specificity	Expressed strongly on the surface of monocytes and weakly on the surface of granulocytes; also expressed by most tissue macrophages.
Sequence similarities	Contains 11 LRR (leucine-rich) repeats.
Post-translational modifications	N- and O- glycosylated. O-glycosylated with a core 1 or possibly core 8 glycan.
Cellular localization	Cell membrane.

Images



Flow Cytometry - PE/Cy7® Anti-CD14 antibody
[61D3], prediluted (ab155360)

Flow cytometric analysis of normal Human peripheral blood cells with mouse IgG1 kappa Isotype Control PE-Cy7 (open histogram) or ab155360 (filled histogram). Cells in the monocyte gate were used for analysis.

Please note: All products are "FOR RESEARCH USE ONLY. NOT FOR USE IN DIAGNOSTIC PROCEDURES"

Our Abpromise to you: Quality guaranteed and expert technical support

- Replacement or refund for products not performing as stated on the datasheet
- Valid for 12 months from date of delivery
- Response to your inquiry within 24 hours
- We provide support in Chinese, English, French, German, Japanese and Spanish

- Extensive multi-media technical resources to help you
- We investigate all quality concerns to ensure our products perform to the highest standards

If the product does not perform as described on this datasheet, we will offer a refund or replacement. For full details of the Abpromise, please visit <https://www.abcam.com/abpromise> or contact our technical team.

Terms and conditions

- Guarantee only valid for products bought direct from Abcam or one of our authorized distributors