

Product datasheet

PE/Cy7® Anti-CD33 antibody [WM-53(WM53)], prediluted ab155348

[1 Image](#)

Overview

Product name	PE/Cy7® Anti-CD33 antibody [WM-53(WM53)], prediluted
Description	PE/Cy7® Mouse monoclonal [WM-53(WM53)] to CD33, prediluted
Host species	Mouse
Conjugation	PE/Cy7®. Ex: 496nm, Em: 774nm
Tested applications	Suitable for: Flow Cyt
Species reactivity	Reacts with: Human
Immunogen	The details of the immunogen for this antibody are not available.
Positive control	Normal Human peripheral blood cells
General notes	<p>This Cy7 tandem dye is sensitive to photoinduced oxidation. Protect this vial from light during storage, handling & experimental procedures.</p> <p>The Life Science industry has been in the grips of a reproducibility crisis for a number of years. Abcam is leading the way in addressing this with our range of recombinant monoclonal antibodies and knockout edited cell lines for gold-standard validation. Please check that this product meets your needs before purchasing.</p> <p>If you have any questions, special requirements or concerns, please send us an inquiry and/or contact our Support team ahead of purchase. Recommended alternatives for this product can be found below, along with publications, customer reviews and Q&As</p>

Properties

Form	Liquid
Storage instructions	Shipped at 4°C. Store at +4°C.
Storage buffer	<p>pH: 7.20</p> <p>Preservative: 0.09% Sodium azide</p> <p>Constituents: 99% PBS, 0.2% BSA</p>
Purity	Protein G purified
Clonality	Monoclonal
Clone number	WM-53(WM53)
Isotype	IgG1

Light chain type

kappa

Applications

The Abpromise guarantee

Our **Abpromise guarantee** covers the use of ab155348 in the following tested applications.

The application notes include recommended starting dilutions; optimal dilutions/concentrations should be determined by the end user.

Application	Abreviews	Notes
Flow Cyt		Use 5µl for 10 ⁶ cells. <u>ab154457</u> - Mouse monoclonal IgG1, is suitable for use as an isotype control with this antibody.

Target

Function

Putative adhesion molecule of myelomonocytic-derived cells that mediates sialic-acid dependent binding to cells. Preferentially binds to alpha-2,6-linked sialic acid. The sialic acid recognition site may be masked by cis interactions with sialic acids on the same cell surface. In the immune response, may act as an inhibitory receptor upon ligand induced tyrosine phosphorylation by recruiting cytoplasmic phosphatase(s) via their SH2 domain(s) that block signal transduction through dephosphorylation of signaling molecules. Induces apoptosis in acute myeloid leukemia (in vitro).

Tissue specificity

Monocytic/myeloid lineage cells.

Sequence similarities

Belongs to the immunoglobulin superfamily. SIGLEC (sialic acid binding Ig-like lectin) family. Contains 1 Ig-like C2-type (immunoglobulin-like) domain. Contains 1 Ig-like V-type (immunoglobulin-like) domain.

Domain

Contains 2 copies of a cytoplasmic motif that is referred to as the immunoreceptor tyrosine-based inhibitor motif (ITIM). This motif is involved in modulation of cellular responses. The phosphorylated ITIM motif can bind the SH2 domain of several SH2-containing phosphatases.

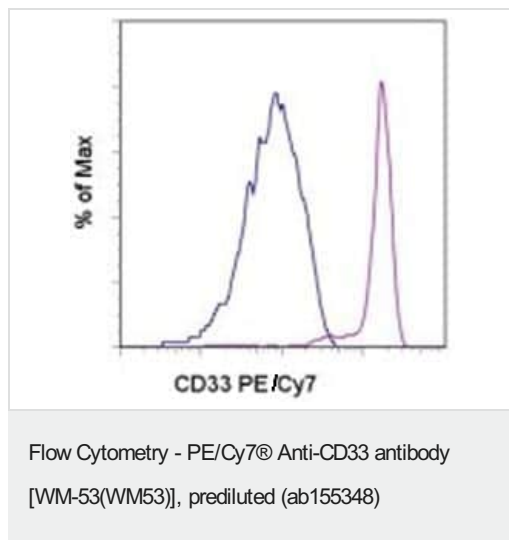
Post-translational modifications

Phosphorylation of Tyr-340 is involved in binding to PTPN6 and PTPN11. Phosphorylation of Tyr-358 is involved in binding to PTPN6.

Cellular localization

Cell membrane.

Images



Flow cytometric analysis of normal Human peripheral blood cells with Mouse IgG1 kappa Isotype Control PE/Cy7 (blue histogram) or ab155348 (purple histogram). Cells in the monocyte gate were used for analysis.

Please note: All products are "FOR RESEARCH USE ONLY. NOT FOR USE IN DIAGNOSTIC PROCEDURES"

Our Abpromise to you: Quality guaranteed and expert technical support

- Replacement or refund for products not performing as stated on the datasheet
- Valid for 12 months from date of delivery
- Response to your inquiry within 24 hours
- We provide support in Chinese, English, French, German, Japanese and Spanish
- Extensive multi-media technical resources to help you
- We investigate all quality concerns to ensure our products perform to the highest standards

If the product does not perform as described on this datasheet, we will offer a refund or replacement. For full details of the Abpromise, please visit <https://www.abcam.com/abpromise> or contact our technical team.

Terms and conditions

- Guarantee only valid for products bought direct from Abcam or one of our authorized distributors