

Product datasheet

PE/Cy7® Anti-CD34 antibody [4H11], prediluted ab155358

[1 References](#) [1 Image](#)

Overview

Product name	PE/Cy7® Anti-CD34 antibody [4H11], prediluted
Description	PE/Cy7® Mouse monoclonal [4H11] to CD34, prediluted
Host species	Mouse
Conjugation	PE/Cy7®. Ex: 496nm, Em: 774nm
Tested applications	Suitable for: Flow Cyt
Species reactivity	Reacts with: Human
Immunogen	Tissue, cells or virus. This information is proprietary to Abcam and/or its suppliers.
Positive control	Normal Human peripheral blood cells.
General notes	<p>The Life Science industry has been in the grips of a reproducibility crisis for a number of years. Abcam is leading the way in addressing this with our range of recombinant monoclonal antibodies and knockout edited cell lines for gold-standard validation. Please check that this product meets your needs before purchasing.</p> <p>If you have any questions, special requirements or concerns, please send us an inquiry and/or contact our Support team ahead of purchase. Recommended alternatives for this product can be found below, along with publications, customer reviews and Q&As</p>

Properties

Form	Liquid
Storage instructions	Shipped at 4°C. Store at +4°C.
Storage buffer	pH: 7.20 Preservative: 0.09% Sodium azide Constituents: 0.2% BSA, 99% PBS
Purity	Protein G purified
Clonality	Monoclonal
Clone number	4H11
Isotype	IgG1
Light chain type	kappa

Applications

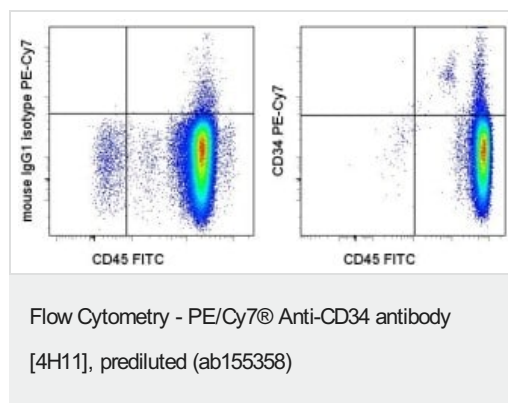
The Abpromise guarantee Our **Abpromise guarantee** covers the use of ab155358 in the following tested applications. The application notes include recommended starting dilutions; optimal dilutions/concentrations should be determined by the end user.

Application	Abreviews	Notes
Flow Cyt		Use 5µl for 10 ⁶ cells. ab154457 - Mouse monoclonal IgG1, is suitable for use as an isotype control with this antibody.

Target

Function	Possible adhesion molecule with a role in early hematopoiesis by mediating the attachment of stem cells to the bone marrow extracellular matrix or directly to stromal cells. Could act as a scaffold for the attachment of lineage specific glycans, allowing stem cells to bind to lectins expressed by stromal cells or other marrow components. Presents carbohydrate ligands to selectins.
Tissue specificity	Selectively expressed on hematopoietic progenitor cells and the small vessel endothelium of a variety of tissues.
Sequence similarities	Belongs to the CD34 family.
Developmental stage	On early hematopoietic progenitor cells.
Post-translational modifications	Highly glycosylated. Phosphorylated on serine residues by PKC.
Cellular localization	Membrane.

Images



Flow cytometric analysis of normal Human peripheral blood cells with Anti-Human CD45 FITC and Mouse IgG1 kappa Isotype Control PE-Cy7 (left) or ab155358 (right). Cells in the lymphocyte gate were used for analysis.

Please note: All products are "FOR RESEARCH USE ONLY. NOT FOR USE IN DIAGNOSTIC PROCEDURES"

Our Abpromise to you: Quality guaranteed and expert technical support

- Replacement or refund for products not performing as stated on the datasheet
- Valid for 12 months from date of delivery

- Response to your inquiry within 24 hours
- We provide support in Chinese, English, French, German, Japanese and Spanish
- Extensive multi-media technical resources to help you
- We investigate all quality concerns to ensure our products perform to the highest standards

If the product does not perform as described on this datasheet, we will offer a refund or replacement. For full details of the Abpromise, please visit <https://www.abcam.com/abpromise> or contact our technical team.

Terms and conditions

- Guarantee only valid for products bought direct from Abcam or one of our authorized distributors