

Product datasheet

PE/Cy7® Anti-IL-2 Receptor alpha antibody [MEM-181] ab234252

[1 Image](#)

Overview

Product name	PE/Cy7® Anti-IL-2 Receptor alpha antibody [MEM-181]
Description	PE/Cy7® Mouse monoclonal [MEM-181] to IL-2 Receptor alpha
Host species	Mouse
Conjugation	PE/Cy7®. Ex: 496nm, Em: 774nm
Tested applications	Suitable for: Flow Cyt
Species reactivity	Reacts with: Human
Immunogen	Tissue, cells or virus corresponding to Human IL-2 Receptor alpha. (PHA-activated peripheral blood leucocytes).
Positive control	Flow Cyt: PHA-stimulated human PBMC.
General notes	<p>This product or portions thereof is manufactured under license from Carnegie Mellon University under U.S. Patent Number 5, 268, 486 and related patents. Cy® and CyDye® are trademarks of Cytiva.</p> <p>The Life Science industry has been in the grips of a reproducibility crisis for a number of years. Abcam is leading the way in addressing this with our range of recombinant monoclonal antibodies and knockout edited cell lines for gold-standard validation. Please check that this product meets your needs before purchasing.</p> <p>If you have any questions, special requirements or concerns, please send us an inquiry and/or contact our Support team ahead of purchase. Recommended alternatives for this product can be found below, along with publications, customer reviews and Q&As</p>

Properties

Form	Liquid
Storage instructions	Shipped at 4°C. Store at +4°C. Store In the Dark.
Storage buffer	pH: 7.4 Preservative: 0.0975% Sodium azide Constituent: PBS
Purity	Size exclusion
Purification notes	Purified antibody is conjugated with tandem dye PE/Cy7 ® under optimum conditions. The

conjugate is purified by size-exclusion chromatography and adjusted for direct use. No reconstitution is necessary.

Clonality Monoclonal
Clone number MEM-181
Isotype IgG1

Applications

The Abpromise guarantee Our **Abpromise guarantee** covers the use of ab234252 in the following tested applications. The application notes include recommended starting dilutions; optimal dilutions/concentrations should be determined by the end user.

Application	Abreviews	Notes
Flow Cyt		Use 4µl for 10 ⁶ cells. (or 100 µl of whole blood).

Target

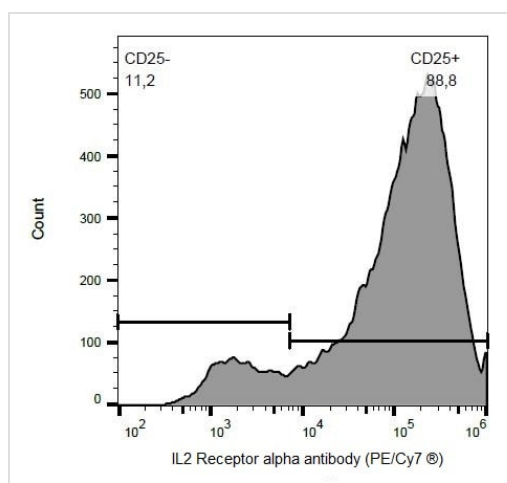
Function Receptor for interleukin-2.

Involvement in disease Genetic variations in IL2RA are associated with susceptibility to diabetes mellitus insulin-dependent type 10 (IDDM10) [MIM:601942]. A multifactorial disorder of glucose homeostasis that is characterized by susceptibility to ketoacidosis in the absence of insulin therapy. Clinical features are polydipsia, polyphagia and polyuria which result from hyperglycemia-induced osmotic diuresis and secondary thirst. These derangements result in long-term complications that affect the eyes, kidneys, nerves, and blood vessels.

Sequence similarities Contains 2 Sushi (CCP/SCR) domains.

Cellular localization Membrane.

Images



Flow cytometric analysis of PHA-stimulated human PBMC labeling IL-2 Receptor alpha with ab234252 at 1µg/ml. Gated on singlets, surface staining.

Flow Cytometry - PE/Cy7® Anti-IL-2 Receptor alpha antibody [MEM-181] (ab234252)

Please note: All products are "FOR RESEARCH USE ONLY. NOT FOR USE IN DIAGNOSTIC PROCEDURES"

Our Abpromise to you: Quality guaranteed and expert technical support

- Replacement or refund for products not performing as stated on the datasheet
- Valid for 12 months from date of delivery
- Response to your inquiry within 24 hours

- We provide support in Chinese, English, French, German, Japanese and Spanish
- Extensive multi-media technical resources to help you
- We investigate all quality concerns to ensure our products perform to the highest standards

If the product does not perform as described on this datasheet, we will offer a refund or replacement. For full details of the Abpromise, please visit <https://www.abcam.com/abpromise> or contact our technical team.

Terms and conditions

- Guarantee only valid for products bought direct from Abcam or one of our authorized distributors