

Product datasheet

PE/Cy7® Anti-Mannose Receptor antibody [15-2] ab270682

[3 Images](#)

Overview

Product name	PE/Cy7® Anti-Mannose Receptor antibody [15-2]
Description	PE/Cy7® Mouse monoclonal [15-2] to Mannose Receptor
Host species	Mouse
Conjugation	PE/Cy7®. Ex: 496nm, Em: 774nm
Specificity	This antibody 15-2 (also known as MR15-2) recognizes an extracellular epitope of CD206 (macrophage mannose receptor, MMR), a 162-175 kDa type I transmembrane protein expressed mainly on macrophages, dendritic cells and hepatic or lymphatic endothelial cells, but not on monocytes.
Tested applications	Suitable for: Flow Cyt
Species reactivity	Reacts with: Human
Immunogen	Full length native protein (purified) corresponding to Human Mannose Receptor.
Positive control	Flow Cyt: Human monocytes.
General notes	<p>This product or portions thereof is manufactured under license from Carnegie Mellon University under U.S. Patent Number 5, 268, 486 and related patents. Cy® and CyDye® are trademarks of Cytiva.</p> <p>The Life Science industry has been in the grips of a reproducibility crisis for a number of years. Abcam is leading the way in addressing this with our range of recombinant monoclonal antibodies and knockout edited cell lines for gold-standard validation. Please check that this product meets your needs before purchasing.</p> <p>If you have any questions, special requirements or concerns, please send us an inquiry and/or contact our Support team ahead of purchase. Recommended alternatives for this product can be found below, along with publications, customer reviews and Q&As</p>

Properties

Form	Liquid
Storage instructions	Shipped at 4°C. Store at +4°C. Store In the Dark.
Storage buffer	pH: 7.4 Preservative: 0.0975% Sodium azide

	Constituent: PBS
Purity	Size exclusion
Clonality	Monoclonal
Clone number	15-2
Isotype	IgG1
Light chain type	kappa

Applications

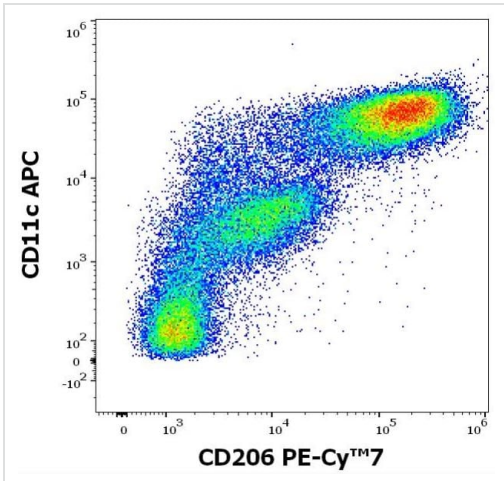
The Abpromise guarantee Our **Abpromise guarantee** covers the use of ab270682 in the following tested applications. The application notes include recommended starting dilutions; optimal dilutions/concentrations should be determined by the end user.

Application	Abreviews	Notes
Flow Cyt		Use 4µl for 10 ⁶ cells. The reagent is designed for analysis of human blood cells using 4 µl reagent / 100 µl of whole blood or 10 ⁶ cells in suspension.

Target

Function	Mediates the endocytosis of glycoproteins by macrophages. Binds both sulfated and non-sulfated polysaccharide chains. Acts as phagocytic receptor for bacteria, fungi and other pathogens.
Sequence similarities	Contains 8 C-type lectin domains. Contains 1 fibronectin type-II domain. Contains 1 ricin B-type lectin domain.
Cellular localization	Membrane.

Images

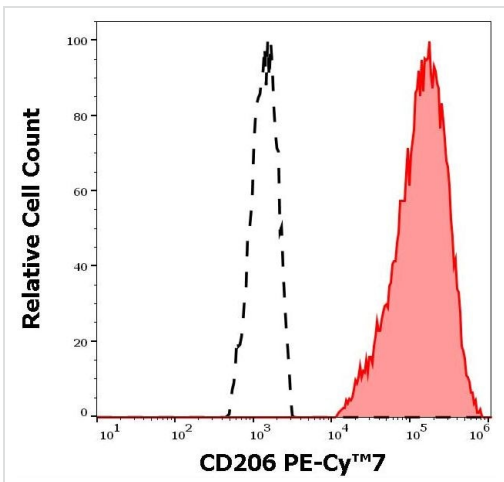


Flow Cytometry - PE/Cy7® Anti-Mannose Receptor antibody [15-2] (ab270682)

Flow cytometry analysis of stimulated human monocytes (GM-CSF + IL-4) labeling Mannose Receptor (CD206) using ab270682.

Surface staining.

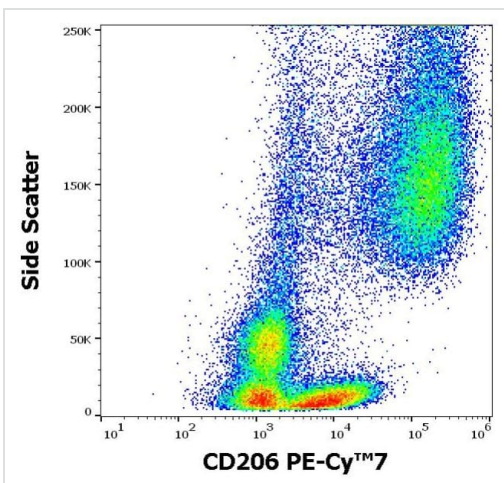
Control is an anti-CD11c (BU15) APC antibody (10 µl reagent per million cells in 100 µl of cell suspension).



Flow Cytometry - PE/Cy7® Anti-Mannose Receptor antibody [15-2] (ab270682)

Flow cytometry analysis of human stimulated monocytes (GM-CSF + IL-4) labeling Mannose Receptor (CD206) using ab270682 (Red). Surface staining.

Control: Non-stimulated lymphocytes (Black).



Flow Cytometry - PE/Cy7® Anti-Mannose Receptor antibody [15-2] (ab270682)

Flow cytometry analysis of stimulated human monocytes (GM-CSF + IL-4) labeling Mannose Receptor (CD206) using ab270682.

Surface staining.

Please note: All products are "FOR RESEARCH USE ONLY. NOT FOR USE IN DIAGNOSTIC PROCEDURES"

Our Abpromise to you: Quality guaranteed and expert technical support

- Replacement or refund for products not performing as stated on the datasheet
- Valid for 12 months from date of delivery
- Response to your inquiry within 24 hours

- We provide support in Chinese, English, French, German, Japanese and Spanish
- Extensive multi-media technical resources to help you
- We investigate all quality concerns to ensure our products perform to the highest standards

If the product does not perform as described on this datasheet, we will offer a refund or replacement. For full details of the Abpromise, please visit <https://www.abcam.com/abpromise> or contact our technical team.

Terms and conditions

- Guarantee only valid for products bought direct from Abcam or one of our authorized distributors