

PE/Cy7® Mouse IgG1 kappa Isotype Control ab239464

[1 Image](#)

Overview

Product name	PE/Cy7® Mouse IgG1 kappa Isotype Control
Conjugation	PE/Cy7®. Ex: 496nm, Em: 774nm
Specificity	ab239464 has unknown specificity and was chosen as an isotype control after screening on variety of resting, activated, live and fixed rat and human tissues.
Tested applications	Suitable for: Flow Cyt
General notes	<p>This product or portions thereof is manufactured under license from Carnegie Mellon University under U.S. Patent Number 5, 268, 486 and related patents. Cy® and CyDye® are trademarks of Cytiva.</p> <p>The Life Science industry has been in the grips of a reproducibility crisis for a number of years. Abcam is leading the way in addressing this with our range of recombinant monoclonal antibodies and knockout edited cell lines for gold-standard validation. Please check that this product meets your needs before purchasing.</p> <p>If you have any questions, special requirements or concerns, please send us an inquiry and/or contact our Support team ahead of purchase. Recommended alternatives for this product can be found below, along with publications, customer reviews and Q&As</p>

Properties

Form	Liquid
Storage instructions	Shipped at 4°C. Store at +4°C. Store In the Dark.
Storage buffer	<p>pH: 7.4</p> <p>Preservative: 0.0975% Sodium azide</p> <p>Constituent: PBS</p>
Purity	Size exclusion
Purification notes	Purified antibody is conjugated with tandem dye PE/Cy7 ® under optimum conditions. The reagent is free of unconjugated PE/Cy7 ®.
Clonality	Monoclonal
Clone number	MOPC-21
Isotype	IgG1
Light chain type	kappa

Applications

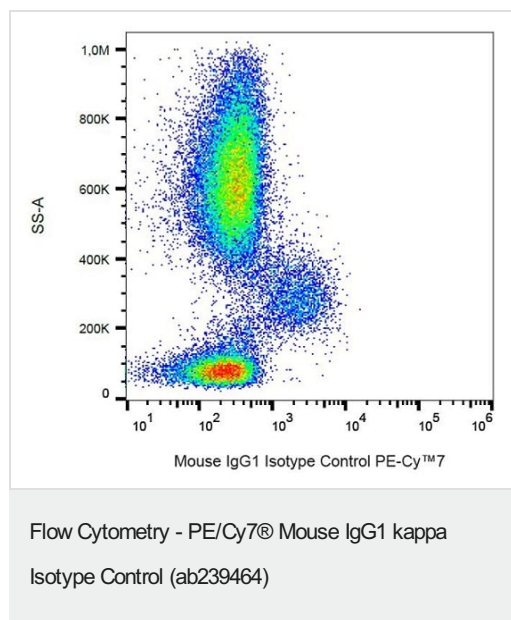
The Abpromise guarantee

Our **Abpromise guarantee** covers the use of ab239464 in the following tested applications.

The application notes include recommended starting dilutions; optimal dilutions/concentrations should be determined by the end user.

Application	Abreviews	Notes
Flow Cyt		Use at an assay dependent concentration. ab239464 is intended as isotype control for flow cytometry analysis to establish the amount of non-specific antibody binding. For your particular experiment, use the same concentration of this isotype control antibody as the recommended working concentration of the antigen-specific antibody. Also, when working with prediluted antibodies, dilute the isotype control to the

Images



Example of non-specific ab239464 signal on human peripheral blood; surface staining, 0.33 µg/ml.

Please note: All products are "FOR RESEARCH USE ONLY. NOT FOR USE IN DIAGNOSTIC PROCEDURES"

Our Abpromise to you: Quality guaranteed and expert technical support

- Replacement or refund for products not performing as stated on the datasheet
- Valid for 12 months from date of delivery
- Response to your inquiry within 24 hours
- We provide support in Chinese, English, French, German, Japanese and Spanish
- Extensive multi-media technical resources to help you
- We investigate all quality concerns to ensure our products perform to the highest standards

If the product does not perform as described on this datasheet, we will offer a refund or replacement. For full details of the Abpromise,

please visit <https://www.abcam.com/abpromise> or contact our technical team.

Terms and conditions

- Guarantee only valid for products bought direct from Abcam or one of our authorized distributors