

## Product datasheet

### PE/Cy7® Anti-PD1 antibody [EH12.2H7] ab270681

[2 Images](#)

#### Overview

<b>Product name</b>	PE/Cy7® Anti-PD1 antibody [EH12.2H7]
<b>Description</b>	PE/Cy7® Mouse monoclonal [EH12.2H7] to PD1
<b>Host species</b>	Mouse
<b>Conjugation</b>	PE/Cy7®. Ex: 496nm, Em: 774nm
<b>Specificity</b>	This antibody recognizes an extracellular epitope of CD279 / PD-1 (programmed cell death 1), a 55 kDa type I transmembrane protein expressed above all during T cell development, on activated T cells, activated B cells, and activated monocytes.
<b>Tested applications</b>	<b>Suitable for:</b> Flow Cyt
<b>Species reactivity</b>	<b>Reacts with:</b> Human
<b>Immunogen</b>	Recombinant fragment corresponding to Human PD1. Database link: <a href="#">Q15116</a>
<b>Epitope</b>	extracellular
<b>Positive control</b>	Flow Cyt: Human PHA stimulated peripheral blood mononuclear cells.
<b>General notes</b>	<p>This product or portions thereof is manufactured under license from Carnegie Mellon University under U.S. Patent Number 5, 268, 486 and related patents. Cy® and CyDye® are trademarks of Cytiva.</p> <p>The Life Science industry has been in the grips of a reproducibility crisis for a number of years. Abcam is leading the way in addressing this with our range of recombinant monoclonal antibodies and knockout edited cell lines for gold-standard validation. Please check that this product meets your needs before purchasing.</p> <p>If you have any questions, special requirements or concerns, please send us an inquiry and/or contact our Support team ahead of purchase. Recommended alternatives for this product can be found below, along with publications, customer reviews and Q&amp;As</p>

#### Properties

<b>Form</b>	Liquid
<b>Storage instructions</b>	Shipped at 4°C. Store at +4°C. Store In the Dark.
<b>Storage buffer</b>	pH: 7.4 Preservative: 0.0975% Sodium azide

	Constituent: PBS
<b>Purity</b>	Size exclusion
<b>Clonality</b>	Monoclonal
<b>Clone number</b>	EH12.2H7
<b>Isotype</b>	IgG1
<b>Light chain type</b>	kappa

## Applications

**The Abpromise guarantee** Our **Abpromise guarantee** covers the use of ab270681 in the following tested applications.

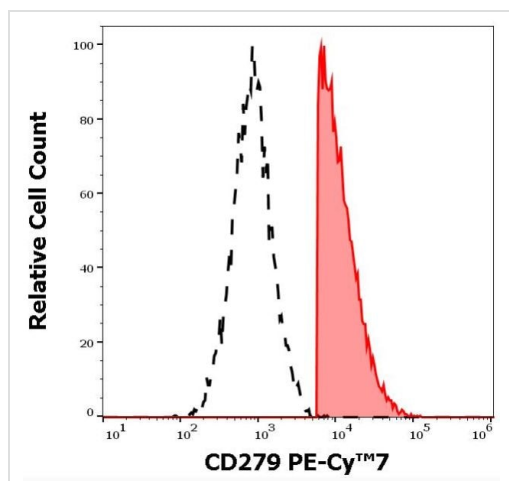
The application notes include recommended starting dilutions; optimal dilutions/concentrations should be determined by the end user.

Application	Abreviews	Notes
<b>Flow Cyt</b>		Use 4µl for 10 <sup>6</sup> cells. The reagent is designed for analysis of human blood cells using 4 µl reagent / 100 µl of whole blood or 10 <sup>6</sup> cells in a suspension.

## Target

<b>Function</b>	Possible cell death inducer, in association with other factors.
<b>Involvement in disease</b>	Genetic variation in PDCD1 is associated with susceptibility to systemic lupus erythematosus type 2 (SLEB2) [MIM:605218]. Systemic lupus erythematosus is a chronic, inflammatory and often febrile multisystemic disorder of connective tissue. It affects principally the skin, joints, kidneys and serosal membranes. It is thought to represent a failure of the regulatory mechanisms of the autoimmune system.
<b>Sequence similarities</b>	Contains 1 Ig-like V-type (immunoglobulin-like) domain.
<b>Developmental stage</b>	Induced at programmed cell death.
<b>Cellular localization</b>	Membrane.

## Images

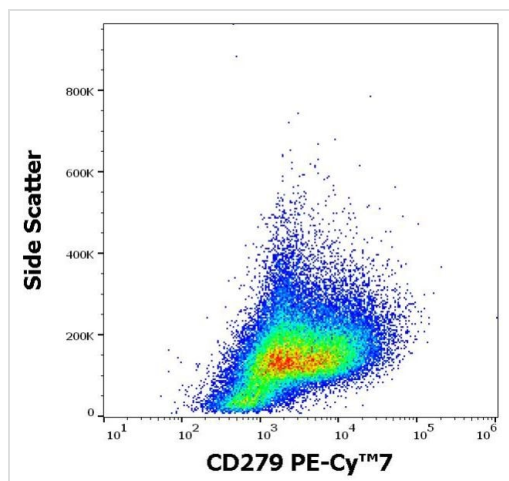


Flow Cytometry - PE/Cy7® Anti-PD1 antibody  
[EH12.2H7] (ab270681)

Flow cytometry analysis of human PHA stimulated peripheral blood mononuclear labeling PD1 (CD279) using ab270681 (Red).

Surface staining.

Control: CD279 negative blood debris (Black).



Flow Cytometry - PE/Cy7® Anti-PD1 antibody  
[EH12.2H7] (ab270681)

Flow cytometry analysis of human PHA stimulated peripheral blood mononuclear labeling PD1 (CD279) using ab270681. Surface

staining.

**Please note:** All products are "FOR RESEARCH USE ONLY. NOT FOR USE IN DIAGNOSTIC PROCEDURES"

**Our Abpromise to you: Quality guaranteed and expert technical support**

- Replacement or refund for products not performing as stated on the datasheet
- Valid for 12 months from date of delivery
- Response to your inquiry within 24 hours
  
- We provide support in Chinese, English, French, German, Japanese and Spanish
- Extensive multi-media technical resources to help you
- We investigate all quality concerns to ensure our products perform to the highest standards

If the product does not perform as described on this datasheet, we will offer a refund or replacement. For full details of the Abpromise, please visit <https://www.abcam.com/abpromise> or contact our technical team.

#### **Terms and conditions**

---

- Guarantee only valid for products bought direct from Abcam or one of our authorized distributors