

Product datasheet

Anti-PEDF antibody ab14993

★★★★★ [1 Abreviews](#) [9 References](#) [2 Images](#)

Overview

Product name	Anti-PEDF antibody
Description	Rabbit polyclonal to PEDF
Host species	Rabbit
Specificity	Recognizes PEDF at 50kDa. Additional bands were detected at 66 and 76kDa, which were competed away by immunogen. These bands may be post translationally modified forms.
Tested applications	Suitable for: WB
Species reactivity	Reacts with: Human
Immunogen	Recombinant full length protein (His-tag) corresponding to Human PEDF. Expressed in baby hamster kidney cells. Database link: P36955
Positive control	WB: RIPA lysates from Y79 cells.
General notes	<p>For maximum recovery of product, centrifuge the original vial after thawing and prior to removing the cap. Further dilutions can be made in assay buffer.</p> <p>The Life Science industry has been in the grips of a reproducibility crisis for a number of years. Abcam is leading the way in addressing this with our range of recombinant monoclonal antibodies and knockout edited cell lines for gold-standard validation. Please check that this product meets your needs before purchasing.</p> <p>If you have any questions, special requirements or concerns, please send us an inquiry and/or contact our Support team ahead of purchase. Recommended alternatives for this product can be found below, along with publications, customer reviews and Q&As</p>

Properties

Form	Liquid
Storage instructions	Shipped at 4°C. Add glycerol to a final volume of 50% for extra stability and aliquot. Store at -20°C. Avoid freeze / thaw cycle.
Storage buffer	pH: 7.40 Preservative: 0.05% Sodium azide Constituents: 0.184% Tris glycine, 30% Glycerol, 0.87% Sodium chloride
Purity	Protein A purified
Clonality	Polyclonal

Isotype

IgG

Applications

The Abpromise guarantee

Our **Abpromise guarantee** covers the use of ab14993 in the following tested applications.

The application notes include recommended starting dilutions; optimal dilutions/concentrations should be determined by the end user.

Application	Abreviews	Notes
WB	★★★★★ (1)	Use a concentration of 0.5 - 2 µg/ml. Detects a band of approximately 50 kDa (predicted molecular weight: 50 kDa).

Target

Function

Neurotrophic protein; induces extensive neuronal differentiation in retinoblastoma cells. Potent inhibitor of angiogenesis. As it does not undergo the S (stressed) to R (relaxed) conformational transition characteristic of active serpins, it exhibits no serine protease inhibitory activity.

Tissue specificity

Retinal pigment epithelial cells and blood plasma.

Sequence similarities

Belongs to the serpin family.

Developmental stage

Expressed in quiescent cells.

Domain

The N-terminal (AA 44-121) exhibits neurite outgrowth-inducing activity. The C-terminal exposed loop (AA 382-418) is essential for serpin activity.

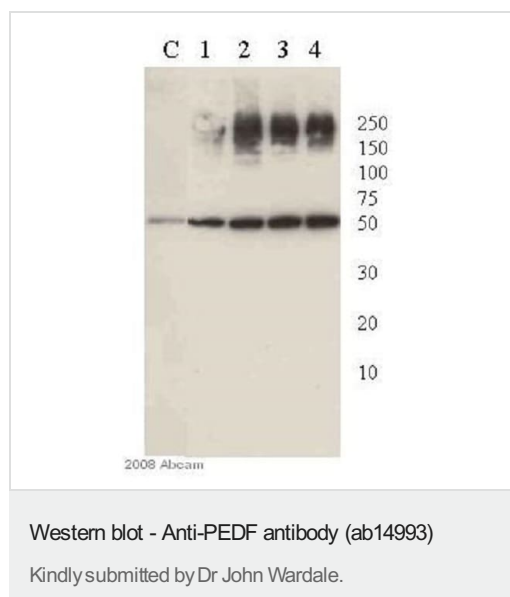
Post-translational modifications

The N-terminus is blocked. Extracellular phosphorylation enhances antiangiogenic activity. N- and O-glycosylated. O-glycosylated with a core 1 or possibly core 8 glycan.

Cellular localization

Secreted. Melanosome. Enriched in stage I melanosomes.

Images

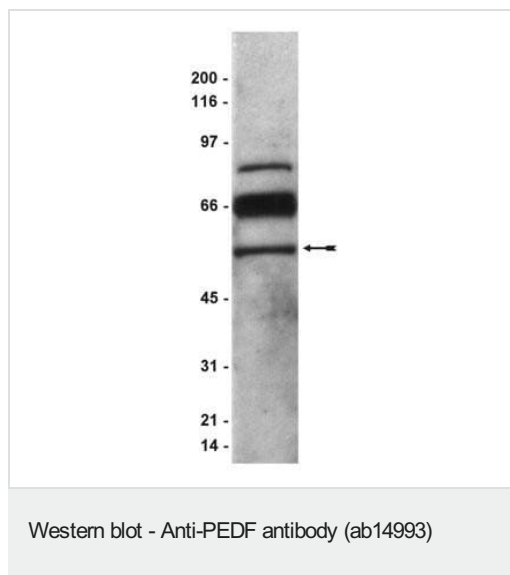


Lanes 1-4: Cartilage lysates from 4 osteoarthritic knee replacement donors (100 mg (wet weight) powdered cartilage/ 1 ml RIPA buffer, extracted for 24 hrs at 4°C)

Lane C: Positive control (overexpressing cell line)

Anticipated band at approx 50kDa detected. Specificity of antibody allowed relatively long exposure and quite high concentrations of primary and secondary antibodies to be used with negligible background. Good results were also obtained with unreduced samples.

The additional approx 250kDa band is likely to be due to PEDF crosslinked or bound to high molecular weight matrix proteins (collagen, aggrecan) which are present in cartilage lysates. Reduction using beta mercaptoethanol reduced some, but not all high MW staining and increased the intensity of the 50kDa band.



Anti-PEDF antibody (ab14993) at 1 µg/ml + Y79 (Human retinoblastoma cell line) cell lysate in RIPA buffer at 40 µg

Secondary

IgG (HRP) goat anti-rabbit

Predicted band size: 50 kDa

Chemiluminescence detection system.

Please note: All products are "FOR RESEARCH USE ONLY. NOT FOR USE IN DIAGNOSTIC PROCEDURES"

Our Abpromise to you: Quality guaranteed and expert technical support

- Replacement or refund for products not performing as stated on the datasheet
- Valid for 12 months from date of delivery
- Response to your inquiry within 24 hours
- We provide support in Chinese, English, French, German, Japanese and Spanish
- Extensive multi-media technical resources to help you
- We investigate all quality concerns to ensure our products perform to the highest standards

If the product does not perform as described on this datasheet, we will offer a refund or replacement. For full details of the Abpromise, please visit <https://www.abcam.com/abpromise> or contact our technical team.

Terms and conditions

- Guarantee only valid for products bought direct from Abcam or one of our authorized distributors