

Product datasheet

Anti-PEDF antibody [EPR25141-150] ab307083

Recombinant RabMAb

4 Images

Overview

Product name	Anti-PEDF antibody [EPR25141-150]
Description	Rabbit monoclonal [EPR25141-150] to PEDF
Host species	Rabbit
Tested applications	Suitable for: Flow Cyt (Intra), ICC/IF Unsuitable for: IHC-Fr, IHC-P or WB
Species reactivity	Reacts with: Human Does not react with: Mouse, Rat
Immunogen	Recombinant fragment. This information is proprietary to Abcam and/or its suppliers.
Positive control	ICC/IF: HepG2 cells. Flow Cyt (Intra): HepG2 cells.
General notes	This product is a recombinant monoclonal antibody, which offers several advantages including: <ul style="list-style-type: none"> - High batch-to-batch consistency and reproducibility - Improved sensitivity and specificity - Long-term security of supply - Animal-free production For more information see here . Our RabMAb [®] technology is a patented hybridoma-based technology for making rabbit monoclonal antibodies. For details on our patents, please refer to RabMAb[®] patents .

Properties

Form	Liquid
Storage instructions	Shipped at 4°C. Store at +4°C short term (1-2 weeks). Upon delivery aliquot. Store at -20°C long term. Avoid freeze / thaw cycle.
Storage buffer	pH: 7.20 Preservative: 0.01% Sodium azide Constituents: 59% PBS, 40% Glycerol (glycerin, glycerine), 0.05% BSA
Purity	Protein A purified
Clonality	Monoclonal
Clone number	EPR25141-150

Isotype

IgG

Applications

The Abpromise guarantee

Our **Abpromise guarantee** covers the use of ab307083 in the following tested applications.

The application notes include recommended starting dilutions; optimal dilutions/concentrations should be determined by the end user.

Application	Abreviews	Notes
Flow Cyt (Intra)		1/500.
ICC/IF		1/100 - 1/1000.

Application notes

Is unsuitable for IHC-Fr,IHC-P or WB.

Target

Function

Neurotrophic protein; induces extensive neuronal differentiation in retinoblastoma cells. Potent inhibitor of angiogenesis. As it does not undergo the S (stressed) to R (relaxed) conformational transition characteristic of active serpins, it exhibits no serine protease inhibitory activity.

Tissue specificity

Retinal pigment epithelial cells and blood plasma.

Sequence similarities

Belongs to the serpin family.

Developmental stage

Expressed in quiescent cells.

Domain

The N-terminal (AA 44-121) exhibits neurite outgrowth-inducing activity. The C-terminal exposed loop (AA 382-418) is essential for serpin activity.

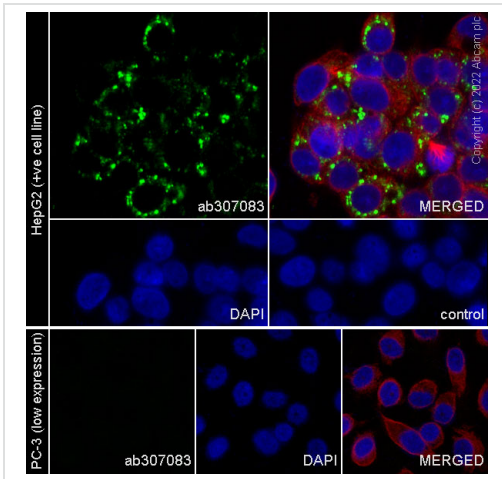
Post-translational modifications

The N-terminus is blocked. Extracellular phosphorylation enhances antiangiogenic activity. N- and O-glycosylated. O-glycosylated with a core 1 or possibly core 8 glycan.

Cellular localization

Secreted. Melanosome. Enriched in stage I melanosomes.

Images



Immunocytochemistry/ Immunofluorescence - Anti-PEDF antibody [EPR25141-150] (ab307083)

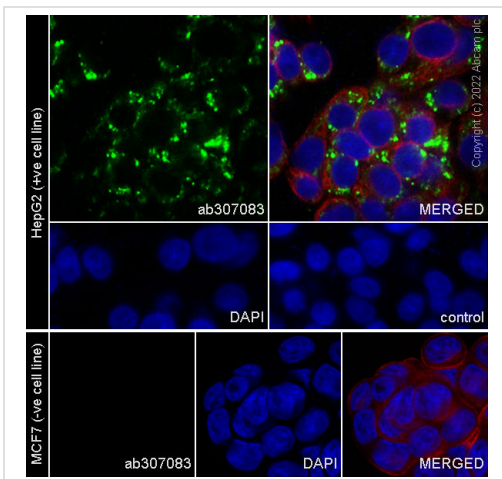
Immunofluorescent analysis of 100% methanol-fixed, 0.1% Triton X-100 permeabilized HepG2 (human hepatocellular carcinoma epithelial cell) cells labeling PEDF with AB307083 at 1/100 dilution (5.76 ug/ml), followed by **ab150081** Goat Anti-Rabbit IgG H&L (Alexa Fluor® 488) preadsorbed antibody at 1/1000 dilution (2 ug/ml) (Green).

Confocal image showing cytoplasmic staining in HepG2 cell line.

Low expression control: PC-3 (PMID:16740777).

Image was taken with a confocal microscope (Leica-Microsystems, TCS SP8). **ab195889** Anti-alpha Tubulin mouse monoclonal antibody - Microtubule Marker (Alexa Fluor® 594) was used to counterstain tubulin at 1/200 dilution (2.5 ug/ml) (Red). The nuclear counterstain was DAPI (Blue).

Secondary antibody only control: Secondary antibody is **ab150081** Goat Anti-Rabbit IgG H&L (Alexa Fluor® 488) preadsorbed at 1/1000 dilution (2 ug/ml).



Immunocytochemistry/ Immunofluorescence - Anti-PEDF antibody [EPR25141-150] (ab307083)

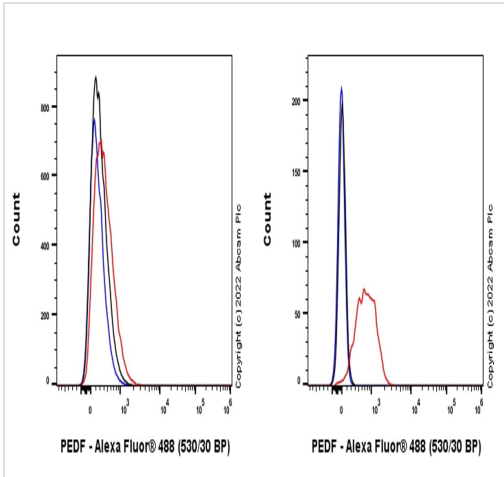
Immunofluorescent analysis of 100% methanol-fixed, 0.1% Triton X-100 permeabilized HepG2 (human hepatocellular carcinoma epithelial cell) cells labeling PEDF with AB307083 at 1/100 dilution (5.76 ug/ml), followed by **ab150081** Goat Anti-Rabbit IgG H&L (Alexa Fluor® 488) preadsorbed antibody at 1/1000 dilution (2 ug/ml) (Green).

Confocal image showing cytoplasmic staining in HepG2 cell line.

Negative control: MCF7 (PMID: 16740777).

Image was taken with a confocal microscope (Leica-Microsystems, TCS SP8). **ab195889** Anti-alpha Tubulin mouse monoclonal antibody - Microtubule Marker (Alexa Fluor® 594) was used to counterstain tubulin at 1/200 dilution (2.5 ug/ml) dilution (Red). The nuclear counterstain was DAPI (Blue).

Secondary antibody only control: Secondary antibody is **ab150081** Goat Anti-Rabbit IgG H&L (Alexa Fluor® 488) preadsorbed at 1/1000 dilution (2 ug/ml).



Flow cytometric analysis of 80% methanol fixed 0.1% Tween-20 permeabilized PC-3 (human prostate adenocarcinoma epithelial cell, Left) / HepG2 (human hepatocellular carcinoma epithelial cell, Right) cells labeling PEDF with AB307083 at 1/500 dilution (0.1ug) (Red) compared with a Rabbit monoclonal IgG ([ab172730](#)) (Black) isotype control and an unlabeled control (cells without incubation with primary antibody and secondary antibody) (Blue). A Goat Anti-Rabbit IgG (Alexa Fluor® 488, [ab150081](#)) at 1/2000 dilution was used as the secondary antibody.

Low expression control: PC-3 (PMID: 16740777).

Flow Cytometry (Intracellular) - Anti-PEDF antibody [EPR25141-150] (ab307083)

Why choose a recombinant antibody?

 Research with confidence Consistent and reproducible results	 Long-term and scalable supply Recombinant technology
 Success from the first experiment Confirmed specificity	 Ethical standards compliant Animal-free production

Anti-PEDF antibody [EPR25141-150] (ab307083)

Please note: All products are "FOR RESEARCH USE ONLY. NOT FOR USE IN DIAGNOSTIC PROCEDURES"

Our Abpromise to you: Quality guaranteed and expert technical support

- Replacement or refund for products not performing as stated on the datasheet
- Valid for 12 months from date of delivery
- Response to your inquiry within 24 hours

- We provide support in Chinese, English, French, German, Japanese and Spanish
- Extensive multi-media technical resources to help you
- We investigate all quality concerns to ensure our products perform to the highest standards

If the product does not perform as described on this datasheet, we will offer a refund or replacement. For full details of the Abpromise, please visit <https://www.abcam.com/abpromise> or contact our technical team.

Terms and conditions

- Guarantee only valid for products bought direct from Abcam or one of our authorized distributors