


Product datasheet

Anti-PELP1 antibody ab84094

[1 References](#) [2 Images](#)

Overview

Product name	Anti-PELP1 antibody
Description	Rabbit polyclonal to PELP1
Host species	Rabbit
Tested applications	Suitable for: IHC-P
Species reactivity	Reacts with: Mouse, Human Predicted to work with: Chimpanzee, Gorilla 
Immunogen	Synthetic peptide, corresponding to a region within the amino acids 1000-1050 of Human MNAR (accession number: AAN41255.1)
Positive control	Human breast adenocarcinoma. Mouse ovary tissue.
General notes	<p>The Life Science industry has been in the grips of a reproducibility crisis for a number of years. Abcam is leading the way in addressing this with our range of recombinant monoclonal antibodies and knockout edited cell lines for gold-standard validation. Please check that this product meets your needs before purchasing.</p> <p>If you have any questions, special requirements or concerns, please send us an inquiry and/or contact our Support team ahead of purchase. Recommended alternatives for this product can be found below, along with publications, customer reviews and Q&As</p>

Properties

Form	Liquid
Storage instructions	Shipped at 4°C. Upon delivery aliquot and store at -20°C. Avoid freeze / thaw cycles.
Storage buffer	pH: 6.8 Preservative: 0.09% Sodium azide Constituents: 0.1% BSA, Tris buffered saline
Purity	Immunogen affinity purified
Clonality	Polyclonal
Isotype	IgG

Applications

The Abpromise guarantee

Our **Abpromise guarantee** covers the use of ab84094 in the following tested applications.

The application notes include recommended starting dilutions; optimal dilutions/concentrations should be determined by the end user.

Application	Abreviews	Notes
IHC-P		

Application notes

IHC-P: 1/100 - 1/500. Epitope exposure is recommended. Epitope exposure with citrate buffer will enhance staining.

Likely to work with frozen sections.

Not yet tested in other applications.

Optimal dilutions/concentrations should be determined by the end user.

Target**Function**

Coactivator of estrogen receptor-mediated transcription and a corepressor of other nuclear hormone receptors and sequence-specific transcription factors. Plays a role in estrogen receptor (ER) genomic activity when present in the nuclear compartment by activating the ER target genes in a hormonal stimulation dependent manner. Can facilitate ER non-genomic signaling via SRC and PI3K interaction in the cytosol. Plays a role in E2-mediated cell cycle progression by interacting with RB1. May have important functional implications in ER/growth factor cross-talk. Interacts with several growth factor signaling components including EGFR and HRS. Involved in nuclear receptor signaling via its interaction with AR and NR3C1. May promote tumorigenesis via its interaction with and modulation of several oncogenes including SRC, PI3K, STAT3 and EGFR. Plays a role in cancer cell metastasis via its ability to modulate E2-mediated cytoskeleton changes and cell migration via its interaction with SRC and PI3K.

Tissue specificity

Isoform 2 is expressed in breast cancer cell lines. Isoform 1 is widely expressed.

Domain

The Glu-rich region mediates histones interaction.

The Leu-Xaa-Xaa-Leu-Leu (LXXLL) motifs are required for the association with nuclear receptor ESR1.

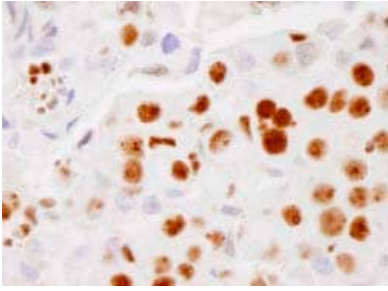
Post-translational modifications

Phosphorylated upon DNA damage, probably by ATM or ATR.

Cellular localization

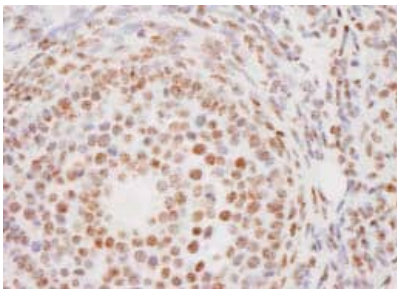
Nucleus. Cytoplasm. Also found associated with the plasma membrane. Mainly in cytoplasm in a subset of breast tumors. Localization is widely deregulated in endometrial cancers with predominantly cytoplasm localization in high-grade endometrial tumors.

Images



Detection of Human MNAR by Immunohistochemistry.
Sample: FFPE section of Human breast adenocarcinoma.
Antibody: ab84094 used at a dilution of 1/500.

Immunohistochemistry (Formalin/PFA-fixed paraffin-embedded sections) - Anti-PELP1 antibody (ab84094)



Detection of Mouse MNAR by Immunohistochemistry.
Sample: FFPE section of Mouse ovary.
Antibody: ab84094 used at a dilution of 1/100.
Detection: DAB.

Immunohistochemistry (Formalin/PFA-fixed paraffin-embedded sections) - Anti-PELP1 antibody (ab84094)

Please note: All products are "FOR RESEARCH USE ONLY. NOT FOR USE IN DIAGNOSTIC PROCEDURES"

Our Abpromise to you: Quality guaranteed and expert technical support

- Replacement or refund for products not performing as stated on the datasheet
- Valid for 12 months from date of delivery
- Response to your inquiry within 24 hours
- We provide support in Chinese, English, French, German, Japanese and Spanish
- Extensive multi-media technical resources to help you
- We investigate all quality concerns to ensure our products perform to the highest standards

If the product does not perform as described on this datasheet, we will offer a refund or replacement. For full details of the Abpromise, please visit <https://www.abcam.com/abpromise> or contact our technical team.

Terms and conditions

- Guarantee only valid for products bought direct from Abcam or one of our authorized distributors