

Product datasheet

Anti-PEN2 antibody - Carboxyterminal end ab62514

★★★★★ [1 Abreviews](#) [2 References](#) [2 Images](#)

Overview

Product name	Anti-PEN2 antibody - Carboxyterminal end
Description	Rabbit polyclonal to PEN2 - Carboxyterminal end
Host species	Rabbit
Tested applications	Suitable for: WB, ICC/IF
Species reactivity	Reacts with: Human
Immunogen	Synthetic peptide (Human) of 13 amino acids from near the C-terminus of PEN2
Positive control	K562 cells
General notes	<p>The Life Science industry has been in the grips of a reproducibility crisis for a number of years. Abcam is leading the way in addressing this with our range of recombinant monoclonal antibodies and knockout edited cell lines for gold-standard validation. Please check that this product meets your needs before purchasing.</p> <p>If you have any questions, special requirements or concerns, please send us an inquiry and/or contact our Support team ahead of purchase. Recommended alternatives for this product can be found below, along with publications, customer reviews and Q&As</p>

Properties

Form	Liquid
Storage instructions	Shipped at 4°C. Store at +4°C.
Storage buffer	pH: 7.2 Preservative: 0.02% Sodium azide Constituent: PBS
Purity	Immunogen affinity purified
Clonality	Polyclonal
Isotype	IgG

Applications

The Abpromise guarantee Our **Abpromise guarantee** covers the use of ab62514 in the following tested applications. The application notes include recommended starting dilutions; optimal dilutions/concentrations should be determined by the end user.

Application	Abreviews	Notes
WB	★★★★★ (1)	Use a concentration of 0.5 - 2 µg/ml. Detects a band of approximately 12 kDa (predicted molecular weight: 12 kDa).
ICC/IF		Use a concentration of 20 µg/ml.

Target

Function

Essential subunit of the gamma-secretase complex, an endoprotease complex that catalyzes the intramembrane cleavage of integral membrane proteins such as Notch receptors and APP (beta-amyloid precursor protein). Probably represents the last step of maturation of gamma-secretase, facilitating endoproteolysis of presenilin and conferring gamma-secretase activity.

Tissue specificity

Widely expressed. Expressed in leukocytes, lung, placenta, small intestine, liver, kidney, spleen, thymus, skeletal muscle, heart and brain.

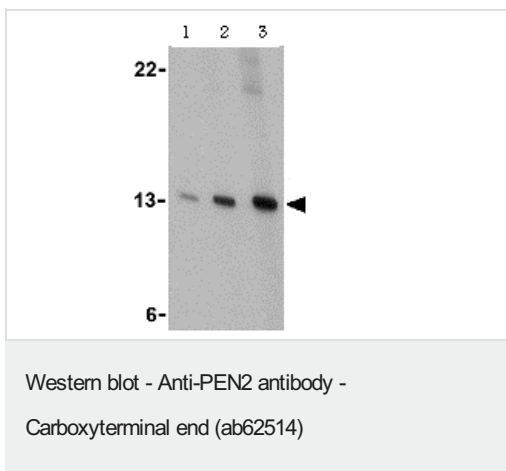
Sequence similarities

Belongs to the PEN-2 family.

Cellular localization

Endoplasmic reticulum membrane. Golgi apparatus > Golgi stack membrane. Predominantly located in the endoplasmic reticulum and in the cis-Golgi.

Images



Lane 1 : Anti-PEN2 antibody - Carboxyterminal end (ab62514) at 0.5 µg/ml

Lane 2 : Anti-PEN2 antibody - Carboxyterminal end (ab62514) at 1 µg/ml

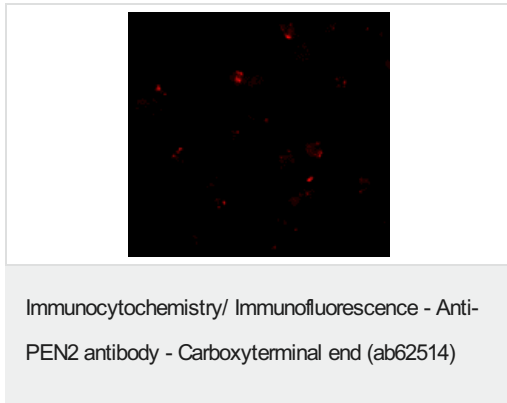
Lane 3 : Anti-PEN2 antibody - Carboxyterminal end (ab62514) at 2 µg/ml

All lanes : K562 cell lysate

Lysates/proteins at 15 µg per lane.

Predicted band size: 12 kDa

Observed band size: 12 kDa



Immunofluorescence of K562 cells using ab62514 at 20 µg/ml.

Please note: All products are "FOR RESEARCH USE ONLY. NOT FOR USE IN DIAGNOSTIC PROCEDURES"

Our Abpromise to you: Quality guaranteed and expert technical support

- Replacement or refund for products not performing as stated on the datasheet
- Valid for 12 months from date of delivery
- Response to your inquiry within 24 hours
- We provide support in Chinese, English, French, German, Japanese and Spanish
- Extensive multi-media technical resources to help you
- We investigate all quality concerns to ensure our products perform to the highest standards

If the product does not perform as described on this datasheet, we will offer a refund or replacement. For full details of the Abpromise, please visit <https://www.abcam.com/abpromise> or contact our technical team.

Terms and conditions

- Guarantee only valid for products bought direct from Abcam or one of our authorized distributors