

Anti-Pepsin antibody ab181876

1 Image

Overview

Product name	Anti-Pepsin antibody
Description	Goat polyclonal to Pepsin
Host species	Goat
Tested applications	Suitable for: ELISA, IHC-P, WB
Species reactivity	Reacts with: Pig
Immunogen	Full length native protein (purified) corresponding to Pig Pepsin aa 1-385. Pepsin protein isolated from pig stomach. Database link: P00791
Positive control	Pepsin protein.
General notes	<p>The Life Science industry has been in the grips of a reproducibility crisis for a number of years. Abcam is leading the way in addressing this with our range of recombinant monoclonal antibodies and knockout edited cell lines for gold-standard validation. Please check that this product meets your needs before purchasing.</p> <p>If you have any questions, special requirements or concerns, please send us an inquiry and/or contact our Support team ahead of purchase. Recommended alternatives for this product can be found below, along with publications, customer reviews and Q&As</p>

Properties

Form	Liquid
Storage instructions	Shipped at 4°C. Store at +4°C short term (1-2 weeks). Upon delivery aliquot. Store at -20°C long term. Avoid freeze / thaw cycle.
Storage buffer	pH: 6.50 Preservative: 0.01% Sodium azide Constituents: 0.27% Tripotassium orthophosphate, 0.88% Sodium chloride
Purity	IgG fraction
Purification notes	Anti-PEPSIN is an IgG fraction antibody purified from monospecific antiserum by a multi-step process which includes delipidation, salt fractionation and ion exchange chromatography followed by extensive dialysis against the buffer stated above.
Clonality	Polyclonal
Isotype	IgG

Applications

The Abpromise guarantee

Our **Abpromise guarantee** covers the use of ab181876 in the following tested applications.

The application notes include recommended starting dilutions; optimal dilutions/concentrations should be determined by the end user.

Application	Abreviews	Notes
ELISA		Use at an assay dependent concentration.
IHC-P		Use at an assay dependent concentration.
WB		1/5000 - 1/20000. Predicted molecular weight: 41 kDa.

Target

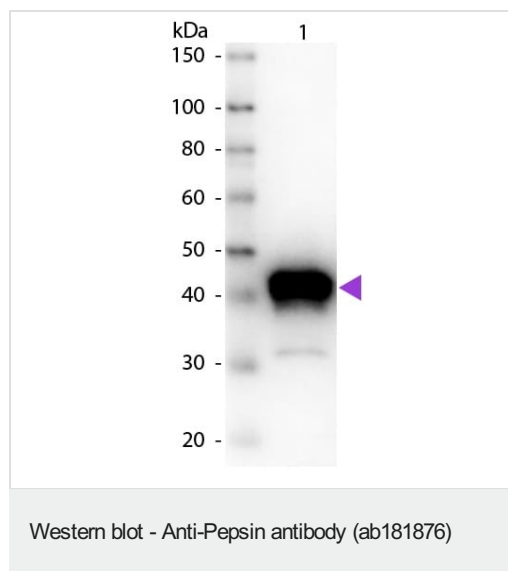
Relevance

Pepsin is a digestive enzyme with particularly broad specificity. It is stored as pepsinogen, so only released when needed. In the stomach, chief cells release pepsinogen. The hormone gastrin and the vagus nerve trigger the release of both pepsinogen and HCl from the stomach lining when food is ingested. HCl creates an acidic environment which allows pepsinogen to unfold and cleave itself in an autocatalytic fashion, thereby generating pepsin (the active form). Pepsin may then cleave the dietary proteins into smaller peptides.

Cellular localization

Secreted

Images



Anti-Pepsin antibody (ab181876) at 1/1000 dilution + Pepsin protein at 0.05 µg

Secondary

Peroxidase goat secondary antibody at 1/40000 dilution

Predicted band size: 41 kDa

Please note: All products are "FOR RESEARCH USE ONLY. NOT FOR USE IN DIAGNOSTIC PROCEDURES"

Our Abpromise to you: Quality guaranteed and expert technical support

- Replacement or refund for products not performing as stated on the datasheet
- Valid for 12 months from date of delivery
- Response to your inquiry within 24 hours
- We provide support in Chinese, English, French, German, Japanese and Spanish
- Extensive multi-media technical resources to help you
- We investigate all quality concerns to ensure our products perform to the highest standards

If the product does not perform as described on this datasheet, we will offer a refund or replacement. For full details of the Abpromise, please visit <https://www.abcam.com/abpromise> or contact our technical team.

Terms and conditions

- Guarantee only valid for products bought direct from Abcam or one of our authorized distributors