


PerCP Anti-CD16 antibody [3G8] ab130761

1 Image

Overview

Product name	PerCP Anti-CD16 antibody [3G8]
Description	PerCP Mouse monoclonal [3G8] to CD16
Host species	Mouse
Conjugation	PerCP. Ex: 482nm, Em: 675nm
Tested applications	Suitable for: Flow Cyt
Species reactivity	Reacts with: Human Predicted to work with: Non human primates 
Immunogen	Tissue, cells or virus corresponding to Human CD16. Human neutrophils.
Positive control	Flow Cyt: Human blood cells.
General notes	<p>The Life Science industry has been in the grips of a reproducibility crisis for a number of years. Abcam is leading the way in addressing this with our range of recombinant monoclonal antibodies and knockout edited cell lines for gold-standard validation. Please check that this product meets your needs before purchasing.</p> <p>If you have any questions, special requirements or concerns, please send us an inquiry and/or contact our Support team ahead of purchase. Recommended alternatives for this product can be found below, along with publications, customer reviews and Q&As</p>

Properties

Form	Liquid
Storage instructions	Shipped at 4°C. Store at +4°C.
Storage buffer	pH: 7.4 Preservative: 0.1% Sodium azide Constituents: 0.2% BSA, 99% PBS
Purity	Size exclusion
Clonality	Monoclonal
Clone number	3G8
Isotype	IgG1

Applications

The Abpromise guarantee

Our **Abpromise guarantee** covers the use of ab130761 in the following tested applications.

The application notes include recommended starting dilutions; optimal dilutions/concentrations should be determined by the end user.

Application	Abreviews	Notes
Flow Cyt		Use at an assay dependent concentration. 10 µl reagent / 100 µl of whole blood or 10 ⁶ cells in a suspension.

Target

Function

Receptor for the Fc region of IgG. Binds complexed or aggregated IgG and also monomeric IgG. Mediates antibody-dependent cellular cytotoxicity (ADCC) and other antibody-dependent responses, such as phagocytosis.

Tissue specificity

Expressed on natural killer cells, macrophages, subpopulation of T-cells, immature thymocytes and placental trophoblasts.

Sequence similarities

Contains 2 Ig-like C2-type (immunoglobulin-like) domains.

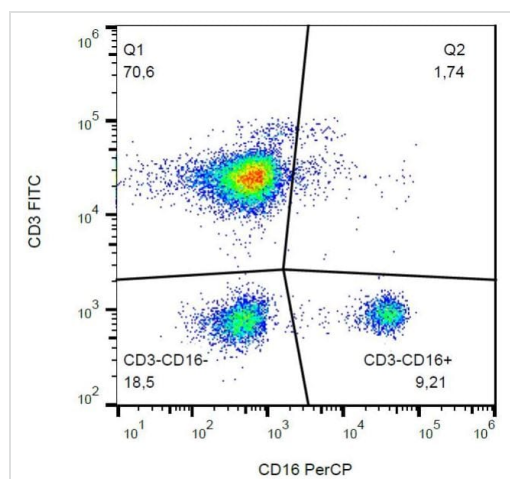
Post-translational modifications

Glycosylated. Contains high mannose- and complex-type oligosaccharides. The soluble form is produced by a proteolytic cleavage.

Cellular localization

Cell membrane. Secreted. Exists also as a soluble receptor.

Images



Flow cytometry analysis (surface staining) of CD16 in human peripheral blood (lymphocyte gate) with ab130761.

Flow Cytometry - PerCP Anti-CD16 antibody [3G8]
(ab130761)

Please note: All products are "FOR RESEARCH USE ONLY. NOT FOR USE IN DIAGNOSTIC PROCEDURES"

Our Abpromise to you: Quality guaranteed and expert technical support

- Replacement or refund for products not performing as stated on the datasheet

- Valid for 12 months from date of delivery
- Response to your inquiry within 24 hours
- We provide support in Chinese, English, French, German, Japanese and Spanish
- Extensive multi-media technical resources to help you
- We investigate all quality concerns to ensure our products perform to the highest standards

If the product does not perform as described on this datasheet, we will offer a refund or replacement. For full details of the Abpromise, please visit <https://www.abcam.com/abpromise> or contact our technical team.

Terms and conditions

- Guarantee only valid for products bought direct from Abcam or one of our authorized distributors