

# PerCP Anti-NCAM1 antibody [MEM-188], prediluted ab134333

[1 Image](#)

### Overview

<b>Product name</b>	PerCP Anti-NCAM1 antibody [MEM-188], prediluted
<b>Description</b>	PerCP Mouse monoclonal [MEM-188] to NCAM1, prediluted
<b>Host species</b>	Mouse
<b>Conjugation</b>	PerCP. Ex: 482nm, Em: 675nm
<b>Tested applications</b>	<b>Suitable for:</b> Flow Cyt
<b>Species reactivity</b>	<b>Reacts with:</b> Human, Non human primates
<b>Immunogen</b>	Tissue, cells or virus corresponding to Human NCAM1. KG-1 Human acute myelogenous leukemia cell line.
<b>Positive control</b>	Human blood cells. Positive tissue: Positive membrane-specific reaction in adjacent peripheral nerve Staining of paraprostatic autonomic ganglion.
<b>General notes</b>	<p>ab134333 is designed for Flow Cytometry analysis of Human blood cells using 10 µl reagent / 100 µl of whole blood or 10<sup>6</sup> cells in a suspension.</p> <p>The Life Science industry has been in the grips of a reproducibility crisis for a number of years. Abcam is leading the way in addressing this with our range of recombinant monoclonal antibodies and knockout edited cell lines for gold-standard validation. Please check that this product meets your needs before purchasing.</p> <p>If you have any questions, special requirements or concerns, please send us an inquiry and/or contact our Support team ahead of purchase. Recommended alternatives for this product can be found below, along with publications, customer reviews and Q&amp;As</p>

### Properties

<b>Form</b>	Liquid
<b>Storage instructions</b>	Shipped at 4°C. Store at +4°C.
<b>Storage buffer</b>	<p>pH: 7.4</p> <p>Preservative: 0.1% Sodium azide</p> <p>Constituents: 99% PBS, 0.2% BSA</p>
<b>Purity</b>	Size exclusion

<b>Clonality</b>	Monoclonal
<b>Clone number</b>	MEM-188
<b>Isotype</b>	IgG2a

## Applications

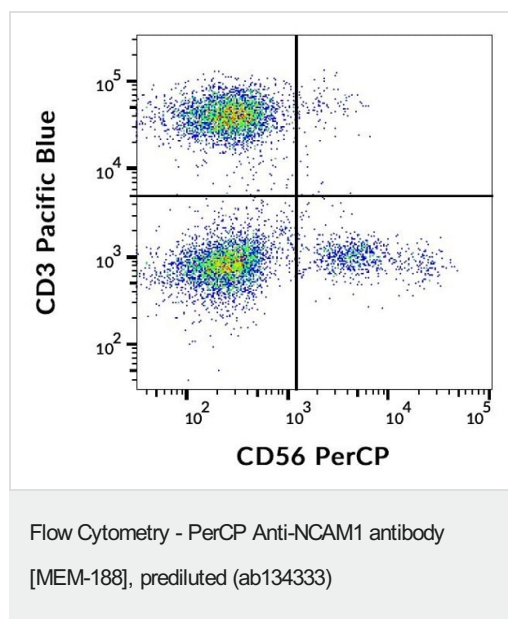
**The Abpromise guarantee** Our **Abpromise guarantee** covers the use of ab134333 in the following tested applications. The application notes include recommended starting dilutions; optimal dilutions/concentrations should be determined by the end user.

Application	Abreviews	Notes
Flow Cyt		Use 10µl for 10 <sup>6</sup> cells. <b>ab110422</b> - Mouse monoclonal IgG2a, is suitable for use as an isotype control with this antibody.

## Target

<b>Function</b>	This protein is a cell adhesion molecule involved in neuron-neuron adhesion, neurite fasciculation, outgrowth of neurites, etc.
<b>Sequence similarities</b>	Contains 2 fibronectin type-III domains. Contains 5 Ig-like C2-type (immunoglobulin-like) domains.
<b>Cellular localization</b>	Secreted and Cell membrane.

## Images



Surface staining of human peripheral blood lymphocytes ab134333 at 1/10 dilution

**Please note:** All products are "FOR RESEARCH USE ONLY. NOT FOR USE IN DIAGNOSTIC PROCEDURES"

### **Our Abpromise to you: Quality guaranteed and expert technical support**

---

- Replacement or refund for products not performing as stated on the datasheet
- Valid for 12 months from date of delivery
- Response to your inquiry within 24 hours
  
- We provide support in Chinese, English, French, German, Japanese and Spanish
- Extensive multi-media technical resources to help you
- We investigate all quality concerns to ensure our products perform to the highest standards

If the product does not perform as described on this datasheet, we will offer a refund or replacement. For full details of the Abpromise, please visit <https://www.abcam.com/abpromise> or contact our technical team.

### **Terms and conditions**

---

- Guarantee only valid for products bought direct from Abcam or one of our authorized distributors