

## Product datasheet

# PerCP/Cy5.5® Anti-CD11c antibody [BU15] ab233643

1 Image

### Overview

---

<b>Product name</b>	PerCP/Cy5.5® Anti-CD11c antibody [BU15]
<b>Description</b>	PerCP/Cy5.5® Mouse monoclonal [BU15] to CD11c
<b>Host species</b>	Mouse
<b>Conjugation</b>	PerCP/Cy5.5®. Ex: 482nm, Em: 690nm
<b>Tested applications</b>	<b>Suitable for:</b> Flow Cyt
<b>Species reactivity</b>	<b>Reacts with:</b> Human
<b>Immunogen</b>	Tissue, cells or virus corresponding to Human CD11c. Dendritic cells of synovial fluid.
<b>Positive control</b>	Flow Cytometry: human peripheral blood cells.
<b>General notes</b>	<p>The Life Science industry has been in the grips of a reproducibility crisis for a number of years. Abcam is leading the way in addressing this with our range of recombinant monoclonal antibodies and knockout edited cell lines for gold-standard validation. Please check that this product meets your needs before purchasing.</p> <p>If you have any questions, special requirements or concerns, please send us an inquiry and/or contact our Support team ahead of purchase. Recommended alternatives for this product can be found below, along with publications, customer reviews and Q&amp;As</p>

### Properties

---

<b>Form</b>	Liquid
<b>Storage instructions</b>	Shipped at 4°C. Store at +4°C. Store In the Dark.
<b>Storage buffer</b>	pH: 7.4 Preservative: 0.1% Sodium azide Constituent: PBS
<b>Purity</b>	Size exclusion
<b>Clonality</b>	Monoclonal
<b>Clone number</b>	BU15
<b>Isotype</b>	IgG1

### Applications

---

## The Abpromise guarantee

Our **Abpromise guarantee** covers the use of ab233643 in the following tested applications.

The application notes include recommended starting dilutions; optimal dilutions/concentrations should be determined by the end user.

Application	Abreviews	Notes
Flow Cyt		Use 4µl for 10 <sup>6</sup> cells.

## Target

**Function** Integrin alpha-X/beta-2 is a receptor for fibrinogen. It recognizes the sequence G-P-R in fibrinogen. It mediates cell-cell interaction during inflammatory responses. It is especially important in monocyte adhesion and chemotaxis.

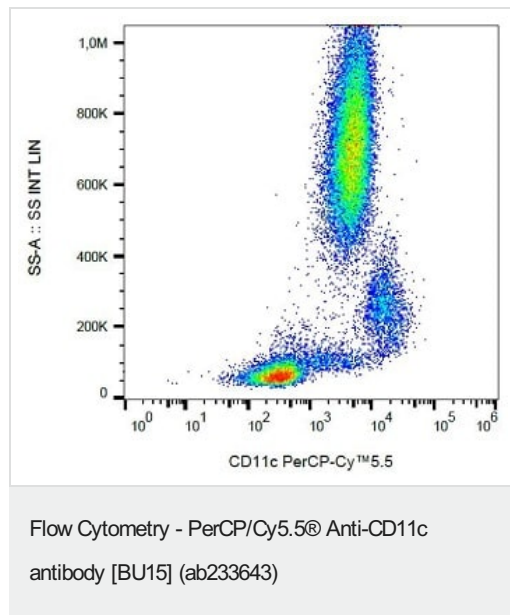
**Tissue specificity** Predominantly expressed in monocytes and granulocytes.

**Sequence similarities** Belongs to the integrin alpha chain family.  
Contains 7 FG-GAP repeats.  
Contains 1 VWFA domain.

**Domain** The integrin I-domain (insert) is a VWFA domain. Integrins with I-domains do not undergo protease cleavage.

**Cellular localization** Membrane.

## Images



Surface staining of human peripheral blood cells with ab233643.

**Please note:** All products are "FOR RESEARCH USE ONLY. NOT FOR USE IN DIAGNOSTIC PROCEDURES"

## Our Abpromise to you: Quality guaranteed and expert technical support

- Replacement or refund for products not performing as stated on the datasheet
- Valid for 12 months from date of delivery

- Response to your inquiry within 24 hours
- We provide support in Chinese, English, French, German, Japanese and Spanish
- Extensive multi-media technical resources to help you
- We investigate all quality concerns to ensure our products perform to the highest standards

If the product does not perform as described on this datasheet, we will offer a refund or replacement. For full details of the Abpromise, please visit <https://www.abcam.com/abpromise> or contact our technical team.

### **Terms and conditions**

---

- Guarantee only valid for products bought direct from Abcam or one of our authorized distributors