

### PerCP/Cy5.5® Anti-CD24 antibody [SN3] ab239339

[1 Image](#)

#### Overview

<b>Product name</b>	PerCP/Cy5.5® Anti-CD24 antibody [SN3]
<b>Description</b>	PerCP/Cy5.5® Mouse monoclonal [SN3] to CD24
<b>Host species</b>	Mouse
<b>Conjugation</b>	PerCP/Cy5.5®. Ex: 482nm, Em: 690nm
<b>Tested applications</b>	<b>Suitable for:</b> Flow Cyt
<b>Species reactivity</b>	<b>Reacts with:</b> Human
<b>Immunogen</b>	Full length native protein (purified) corresponding to CD24. Glycoproteins purified from human NALM-1 cell line.
<b>Positive control</b>	Flow Cyt: Human peripheral blood cells.
<b>General notes</b>	<p>The Life Science industry has been in the grips of a reproducibility crisis for a number of years. Abcam is leading the way in addressing this with our range of recombinant monoclonal antibodies and knockout edited cell lines for gold-standard validation. Please check that this product meets your needs before purchasing.</p> <p>If you have any questions, special requirements or concerns, please send us an inquiry and/or contact our Support team ahead of purchase. Recommended alternatives for this product can be found below, along with publications, customer reviews and Q&amp;As</p>

#### Properties

<b>Form</b>	Liquid
<b>Storage instructions</b>	Shipped at 4°C. Store at +4°C. Store In the Dark.
<b>Storage buffer</b>	<p>pH: 7.4</p> <p>Preservative: 0.0975% Sodium azide</p> <p>Constituent: PBS</p>
<b>Purity</b>	Size exclusion
<b>Purification notes</b>	<p>The purified antibody is conjugated with tandem dye PerCP-Cy™5.5 under optimum conditions. The conjugate is purified by size-exclusion chromatography and adjusted for direct use. No reconstitution is necessary.</p>
<b>Clonality</b>	Monoclonal
<b>Clone number</b>	SN3

Isotype

IgG1

## Applications

### The Abpromise guarantee

Our **Abpromise guarantee** covers the use of ab239339 in the following tested applications.

The application notes include recommended starting dilutions; optimal dilutions/concentrations should be determined by the end user.

Application	Abreviews	Notes
Flow Cyt		Use 4µl for 10 <sup>6</sup> cells. OR 100 µl of whole blood.

## Target

### Function

Modulates B-cell activation responses. Signaling could be triggered by the binding of a lectin-like ligand to the CD24 carbohydrates, and transduced by the release of second messengers derived from the GPI-anchor. Promotes AG-dependent proliferation of B-cells, and prevents their terminal differentiation into antibody-forming cells.

### Tissue specificity

B-cells. Expressed in a number of B-cell lines including P32/SH and Namalwa. Expressed in erythroleukemia cell and small cell lung carcinoma cell lines. Also expressed on the surface of T-cells.

### Involvement in disease

Genetic variations in CD24 are associated with susceptibility to multiple sclerosis (MS) [MIM:126200]. A multifactorial, inflammatory, demyelinating disease of the central nervous system. Sclerotic lesions are characterized by perivascular infiltration of monocytes and lymphocytes and appear as indurated areas in pathologic specimens (sclerosis in plaques). The pathological mechanism is regarded as an autoimmune attack of the myelin sheath, mediated by both cellular and humoral immunity. Clinical manifestations include visual loss, extra-ocular movement disorders, paresthesias, loss of sensation, weakness, dysarthria, spasticity, ataxia and bladder dysfunction. Genetic and environmental factors influence susceptibility to the disease. Note=Polymorphisms in CD24 may act as a genetic modifier for susceptibility and progression of MS in some populations, perhaps by affecting the efficiency of CD24 expression on the cell surface.

### Sequence similarities

Belongs to the CD24 family.

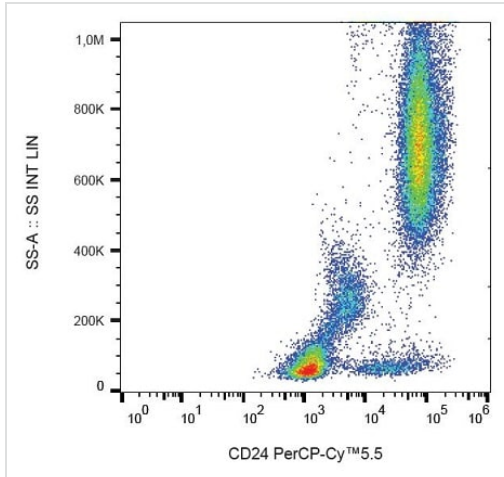
### Post-translational modifications

Extensively O-glycosylated.

### Cellular localization

Cell membrane.

## Images



Flow Cytometry - PerCP/Cy5.5® Anti-CD24  
antibody [SN3] (ab239339)

Flow Cytometric analysis of human peripheral blood cells labeling CD24 with ab239339. Surface staining.

**Please note:** All products are "FOR RESEARCH USE ONLY. NOT FOR USE IN DIAGNOSTIC PROCEDURES"

### Our Abpromise to you: Quality guaranteed and expert technical support

- Replacement or refund for products not performing as stated on the datasheet
- Valid for 12 months from date of delivery
- Response to your inquiry within 24 hours
- We provide support in Chinese, English, French, German, Japanese and Spanish
- Extensive multi-media technical resources to help you
- We investigate all quality concerns to ensure our products perform to the highest standards

If the product does not perform as described on this datasheet, we will offer a refund or replacement. For full details of the Abpromise, please visit <https://www.abcam.com/abpromise> or contact our technical team.

### Terms and conditions

- Guarantee only valid for products bought direct from Abcam or one of our authorized distributors