

Product datasheet

PerCP/Cy5.5® Anti-Human IgM antibody [CH2] ab201295

1 Image

Overview

Product name	PerCP/Cy5.5® Anti-Human IgM antibody [CH2]
Description	PerCP/Cy5.5® Mouse monoclonal [CH2] to Human IgM
Host species	Mouse
Conjugation	PerCP/Cy5.5®. Ex: 482nm, Em: 690nm
Specificity	ab201295 reacts with Fc fragment of Human IgM.
Tested applications	Suitable for: Flow Cyt
Species reactivity	Reacts with: Human
Immunogen	Full length native protein (purified) corresponding to Human Human IgM. Database link: P01871
Positive control	Flow Cyt: Human peripheral blood cells.
General notes	<p>The Life Science industry has been in the grips of a reproducibility crisis for a number of years. Abcam is leading the way in addressing this with our range of recombinant monoclonal antibodies and knockout edited cell lines for gold-standard validation. Please check that this product meets your needs before purchasing.</p> <p>If you have any questions, special requirements or concerns, please send us an inquiry and/or contact our Support team ahead of purchase. Recommended alternatives for this product can be found below, along with publications, customer reviews and Q&As</p>

Properties

Form	Liquid
Storage instructions	Shipped at 4°C. Store at +4°C. Store In the Dark.
Storage buffer	pH: 7.4 Preservative: 0.0978% Sodium azide Constituents: 99% PBS, 0.2% BSA
Purity	Size exclusion
Clonality	Monoclonal
Clone number	CH2

Isotype

IgG1

Applications

The Abpromise guarantee

Our **Abpromise guarantee** covers the use of ab201295 in the following tested applications.

The application notes include recommended starting dilutions; optimal dilutions/concentrations should be determined by the end user.

Application	Abreviews	Notes
Flow Cyt		Use a concentration of 1 - 2 µg/ml.

Target

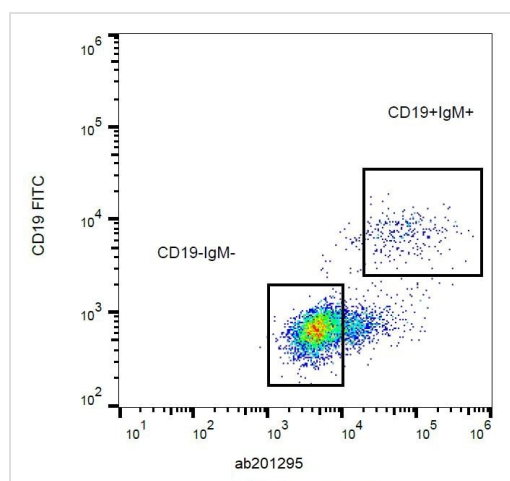
Relevance

IgM normally constitutes about 10% of serum immunoglobulins. IgM antibody is prominent in early immune responses to most antigens and is largely confined to plasma due to its large size. Monomeric IgM is expressed as a membrane bound antibody on the surface of B cells and as a pentamer when secreted by plasma cells. Due to its high valency IgM is more efficient than other isotypes in binding antigens with repeating epitopes (virus particles and red blood cells) and is more efficient than IgG in activating the complement pathway. The gene for the mu constant region contains four domains separated by short intervening sequences. IgM measurement yields information about the body's immediate resistance and response to infection as well as information related to specific diseases. Decreased levels are associated with immune deficiency states, hereditary deficiencies, and myeloma. Increased levels can be associated with Waldenstrom's macroglobulinemia, chronic infection and hepatocellular disease.

Cellular localization

Cell Membrane and Secreted

Images



Flow cytometry analysis (surface staining) of human peripheral blood cells with ab201295 at 1 µg/ml.

Flow Cytometry - PerCP/Cy5.5® Anti-Human IgM antibody [CH2] (ab201295)

Please note: All products are "FOR RESEARCH USE ONLY. NOT FOR USE IN DIAGNOSTIC PROCEDURES"

Our Abpromise to you: Quality guaranteed and expert technical support

- Replacement or refund for products not performing as stated on the datasheet
- Valid for 12 months from date of delivery
- Response to your inquiry within 24 hours

- We provide support in Chinese, English, French, German, Japanese and Spanish
- Extensive multi-media technical resources to help you
- We investigate all quality concerns to ensure our products perform to the highest standards

If the product does not perform as described on this datasheet, we will offer a refund or replacement. For full details of the Abpromise, please visit <https://www.abcam.com/abpromise> or contact our technical team.

Terms and conditions

- Guarantee only valid for products bought direct from Abcam or one of our authorized distributors