




Product datasheet

Anti-Pericentrin 1/FROUNT antibody ab176801

[2 Images](#)

Overview

Product name	Anti-Pericentrin 1/FROUNT antibody
Description	Rabbit polyclonal to Pericentrin 1/FROUNT
Host species	Rabbit
Tested applications	Suitable for: WB, IP
Species reactivity	Reacts with: Mouse, Human Predicted to work with: Rat, Chimpanzee, Cynomolgus monkey, Rhesus monkey, Gorilla, Orangutan 
Immunogen	Synthetic peptide within Human Pericentrin 1/FROUNT aa 1-50. The exact sequence is proprietary. (NP_079120.1). Sequence: MEELDGEPTVTLIPGVNSKKNQMYFDWGPGEMLVCETSF NKKEKSEMVPS Database link: Q9BW27  Run BLAST with  Run BLAST with
Positive control	293T, HeLa, Jurkat, TCMK-1 and NIH 3T3 whole cell lysates.
General notes	<p>The Life Science industry has been in the grips of a reproducibility crisis for a number of years. Abcam is leading the way in addressing this with our range of recombinant monoclonal antibodies and knockout edited cell lines for gold-standard validation. Please check that this product meets your needs before purchasing.</p> <p>If you have any questions, special requirements or concerns, please send us an inquiry and/or contact our Support team ahead of purchase. Recommended alternatives for this product can be found below, along with publications, customer reviews and Q&As</p>

Properties

Form	Liquid
Storage instructions	Shipped at 4°C. Store at +4°C short term (1-2 weeks). Upon delivery aliquot. Store at -20°C long term. Avoid freeze / thaw cycle.
Storage buffer	pH: 7 Preservative: 0.09% Sodium azide Constituent: 99% Tris citrate/phosphate

	pH 7 to 8
Purity	Immunogen affinity purified
Purification notes	ab176801 was affinity purified using an epitope specific to Pericentrin 1/FROUNT immobilized on solid support.
Clonality	Polyclonal
Isotype	IgG

Applications

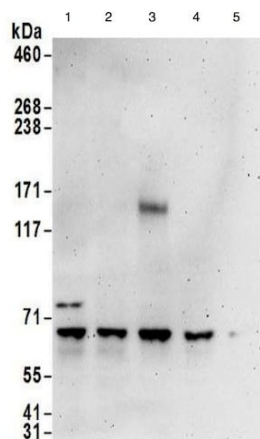
The Abpromise guarantee Our **Abpromise guarantee** covers the use of ab176801 in the following tested applications. The application notes include recommended starting dilutions; optimal dilutions/concentrations should be determined by the end user.

Application	Abreviews	Notes
WB		1/2000 - 1/10000. Predicted molecular weight: 75 kDa.
IP		Use at 2-10 µg/mg of lysate.

Target

Function	Essential component of the nuclear pore complex (NPC) that seems to be required for NPC assembly and maintenance. As part of the NPC Nup107-160 subcomplex plays a role in RNA export and in tethering NUP98/Nup98 and NUP153 to the nucleus. The Nup107-160 complex seems to be required for spindle assembly during mitosis. NUP85 is required for membrane clustering of CCL2-activated CCR2. Seems to be involved in CCR2-mediated chemotaxis of monocytes and may link activated CCR2 to the phosphatidylinositol 3-kinase-Rac-lammellipodium protrusion cascade.
Sequence similarities	Belongs to the nucleoporin Nup85 family.
Cellular localization	Nucleus > nuclear pore complex. Chromosome > centromere > kinetochore. Cytoplasm > cytoskeleton > spindle. Cytoplasm. Nucleus membrane. During mitosis, localizes to the kinetochores and spindle poles. Upon CCI2 stimulation translocates from the cytoplasm to the membrane and colocalizes with CCR2 at the front of migrating cells.

Images



Western blot - Anti-Pericentrin 1/FROUNT antibody (ab176801)

All lanes : Anti-Pericentrin 1/FROUNT antibody (ab176801) at 0.1 $\mu\text{g/ml}$

Lane 1 : 293T whole cell lysate

Lane 2 : HeLa whole cell lysate

Lane 3 : Jurkat whole cell lysate

Lane 4 : TCMK-1 whole cell lysate

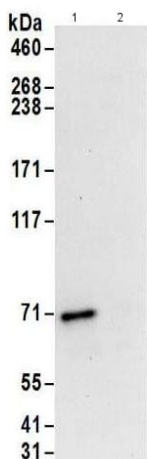
Lane 5 : NIH 3T3 whole cell lysate

Lysates/proteins at 50 μg per lane.

Developed using the ECL technique.

Predicted band size: 75 kDa

Exposure time: 3 minutes



Immunoprecipitation - Anti-Pericentrin 1/FROUNT antibody (ab176801)

Detection of Pericentrin 1 in Immunoprecipitates of 293T whole cell lysate (1 mg for IP, 20% of IP loaded) using ab176801 at 6 $\mu\text{g/mg}$ lysate for IP (Lane 1) and at 1 $\mu\text{g/ml}$ for subsequent Western blot detection. Lane 2 represents control IgG IP.

Detection: Chemiluminescence with an exposure time of 10 seconds..

Please note: All products are "FOR RESEARCH USE ONLY. NOT FOR USE IN DIAGNOSTIC PROCEDURES"

Our Abpromise to you: Quality guaranteed and expert technical support

- Replacement or refund for products not performing as stated on the datasheet
- Valid for 12 months from date of delivery
- Response to your inquiry within 24 hours

- We provide support in Chinese, English, French, German, Japanese and Spanish
- Extensive multi-media technical resources to help you
- We investigate all quality concerns to ensure our products perform to the highest standards

If the product does not perform as described on this datasheet, we will offer a refund or replacement. For full details of the Abpromise, please visit <https://www.abcam.com/abpromise> or contact our technical team.

Terms and conditions

- Guarantee only valid for products bought direct from Abcam or one of our authorized distributors