



## Product datasheet

### Anti-Perilipin-1 antibody ab3526

★★★★★ [16 Abreviews](#) [111 References](#) [2 Images](#)

#### Overview

<b>Product name</b>	Anti-Perilipin-1 antibody
<b>Description</b>	Rabbit polyclonal to Perilipin-1
<b>Host species</b>	Rabbit
<b>Tested applications</b>	<b>Suitable for:</b> Flow Cyt, IHC-P, WB, ICC, IHC-FoFr
<b>Species reactivity</b>	<b>Reacts with:</b> Mouse, Rat, Cow, Dog, Human, Rhesus monkey
<b>Immunogen</b>	Synthetic peptide corresponding to Rat Perilipin-1 aa 500-600. (Peptide available as <a href="#">ab5009</a> )
	 <a href="#">Run BLAST with</a>  <a href="#">Run BLAST with</a>
<b>Positive control</b>	ICC: mouse 3T3-L1 cells; WB: mouse 3T3-L1 cells
<b>General notes</b>	<p>The Life Science industry has been in the grips of a reproducibility crisis for a number of years. Abcam is leading the way in addressing this with our range of recombinant monoclonal antibodies and knockout edited cell lines for gold-standard validation. Please check that this product meets your needs before purchasing.</p> <p>If you have any questions, special requirements or concerns, please send us an inquiry and/or contact our Support team ahead of purchase. Recommended alternatives for this product can be found below, along with publications, customer reviews and Q&amp;As</p>

#### Properties

<b>Form</b>	Liquid
<b>Storage instructions</b>	Shipped at 4°C. Store at +4°C short term (1-2 weeks). Upon delivery aliquot. Store at -20°C or -80°C. Avoid freeze / thaw cycle.
<b>Storage buffer</b>	Preservative: 0.05% Sodium azide Constituents: 99% PBS, 0.01% BSA
<b>Purity</b>	Immunogen affinity purified
<b>Clonality</b>	Polyclonal
<b>Isotype</b>	IgG

#### Applications

## The Abpromise guarantee

Our **Abpromise guarantee** covers the use of ab3526 in the following tested applications.

The application notes include recommended starting dilutions; optimal dilutions/concentrations should be determined by the end user.

Application	Abreviews	Notes
Flow Cyt		Use at an assay dependent concentration.
IHC-P	★★★★★ (6)	Use at an assay dependent concentration.
WB	★★★★★ (2)	1/1000 - 1/4000. Can be blocked with <b>Perilipin-1 peptide (ab5009)</b> . By Western blot, this antibody detects an ~62 kDa protein representing Perilipin-1 from 3T3-L1 cell extract.
ICC		Use a concentration of 2 µg/ml.
IHC-FoFr		Use at an assay dependent concentration. PubMed: 20049087

## Target

### Function

Modulator of adipocyte lipid metabolism. Coats lipid storage droplets to protect them from breakdown by hormone-sensitive lipase (HSL). Its absence may result in leanness.

### Tissue specificity

Adipocytes.

### Sequence similarities

Belongs to the perilipin family.

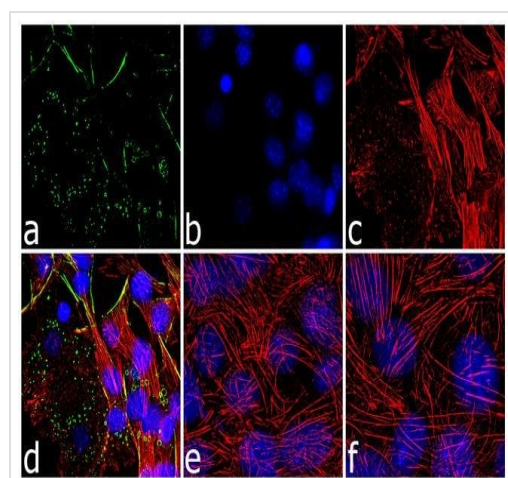
### Post-translational modifications

Major cAMP-dependent protein kinase-substrate in adipocytes, also dephosphorylated by PP1. When phosphorylated, may be maximally sensitive to HSL and when unphosphorylated, may play a role in the inhibition of lipolysis, by acting as a barrier in lipid droplet.

### Cellular localization

Lipid droplet. Lipid droplet surface-associated.

## Images

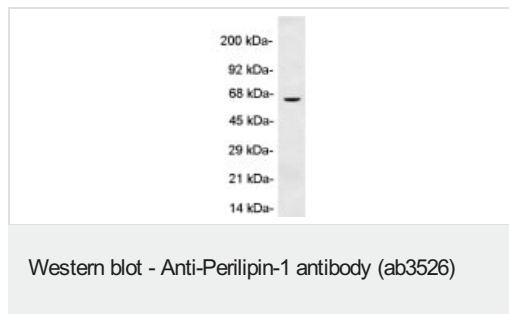


Immunocytochemistry - Anti-Perilipin-1 antibody (ab3526)

Immunocytochemistry analysis of 3T3-L1 cells (Mouse embryonic fibroblast cell line), 4% paraformaldehyde fixed (10 minutes) permeabilized with 0.1% Triton™ X-100 (10 minutes), and blocked with 1% BSA for (1 hour).

Perilipin A was labeled with ab3526 at 2 µg/ml in 0.1% BSA and incubated for 3 hours at room temperature with secondary antibody: Goat anti-Rabbit IgG (H+L) Superclonal™ Secondary Antibody, Alexa Fluor® 488 conjugate at a dilution of 1:2000 for 45 minutes at room temperature (Panel A: green).

Panel B: Nuclei were stained with DAPI (blue); Panel C: (red) F-actin stained with Alexa Fluor® 555 Rhodamine Phalloidin 1:300. Panel D: merged image showing cytosolic localization; Panel E: untreated; Panel F: control cells with no primary antibody.



Western blot detection of Perilipin-1 in 3T3-L1 cell extract using ab3526.

**Please note:** All products are "FOR RESEARCH USE ONLY. NOT FOR USE IN DIAGNOSTIC PROCEDURES"

### Our Abpromise to you: Quality guaranteed and expert technical support

---

- Replacement or refund for products not performing as stated on the datasheet
- Valid for 12 months from date of delivery
- Response to your inquiry within 24 hours
- We provide support in Chinese, English, French, German, Japanese and Spanish
- Extensive multi-media technical resources to help you
- We investigate all quality concerns to ensure our products perform to the highest standards

If the product does not perform as described on this datasheet, we will offer a refund or replacement. For full details of the Abpromise, please visit <https://www.abcam.com/abpromise> or contact our technical team.

### Terms and conditions

---

- Guarantee only valid for products bought direct from Abcam or one of our authorized distributors