


## Product datasheet

# Anti-Peroxiredoxin 1/PAG antibody ab228780

[1 References](#) [3 Images](#)

### Overview

---

<b>Product name</b>	Anti-Peroxiredoxin 1/PAG antibody
<b>Description</b>	Rabbit polyclonal to Peroxiredoxin 1/PAG
<b>Host species</b>	Rabbit
<b>Tested applications</b>	<b>Suitable for:</b> WB, IHC-P
<b>Species reactivity</b>	<b>Reacts with:</b> Mouse, Human <b>Predicted to work with:</b> Rat, Cow, Dog, Rhesus monkey 
<b>Immunogen</b>	Recombinant fragment within Human Peroxiredoxin 1/PAG (internal sequence). The exact sequence is proprietary. Database link: <a href="#">Q06830</a>
<b>Positive control</b>	WB: Mouse brain lysate; NCI-H1299, HeLa and HepG2 whole cell lysate ( <a href="#">ab7900</a> ). IHC-P: HT-29 xenograft tissue.
<b>General notes</b>	<p>The Life Science industry has been in the grips of a reproducibility crisis for a number of years. Abcam is leading the way in addressing this with our range of recombinant monoclonal antibodies and knockout edited cell lines for gold-standard validation. Please check that this product meets your needs before purchasing.</p> <p>If you have any questions, special requirements or concerns, please send us an inquiry and/or contact our Support team ahead of purchase. Recommended alternatives for this product can be found below, along with publications, customer reviews and Q&amp;As</p>

### Properties

---

<b>Storage instructions</b>	Shipped at 4°C. Store at +4°C short term (1-2 weeks). Upon delivery aliquot. Store at -20°C long term. Avoid freeze / thaw cycle.
<b>Storage buffer</b>	pH: 7.00 Preservative: 0.01% Thimerosal (merthiolate) Constituents: 1.21% Tris, 0.75% Glycine, 10% Glycerol (glycerin, glycerine)
<b>Purity</b>	Immunogen affinity purified
<b>Clonality</b>	Polyclonal
<b>Isotype</b>	IgG

## Applications

### The Abpromise guarantee

Our **Abpromise guarantee** covers the use of ab228780 in the following tested applications.

The application notes include recommended starting dilutions; optimal dilutions/concentrations should be determined by the end user.

Application	Abreviews	Notes
WB		1/500 - 1/3000. Predicted molecular weight: 22 kDa.
IHC-P		1/100 - 1/1000.

## Target

### Function

Involved in redox regulation of the cell. Reduces peroxides with reducing equivalents provided through the thioredoxin system but not from glutaredoxin. May play an important role in eliminating peroxides generated during metabolism. Might participate in the signaling cascades of growth factors and tumor necrosis factor-alpha by regulating the intracellular concentrations of H<sub>2</sub>O<sub>2</sub>. Reduces an intramolecular disulfide bond in GDPD5 that gates the ability to GDPD5 to drive postmitotic motor neuron differentiation.

### Sequence similarities

Belongs to the ahpC/TSA family.  
Contains 1 thioredoxin domain.

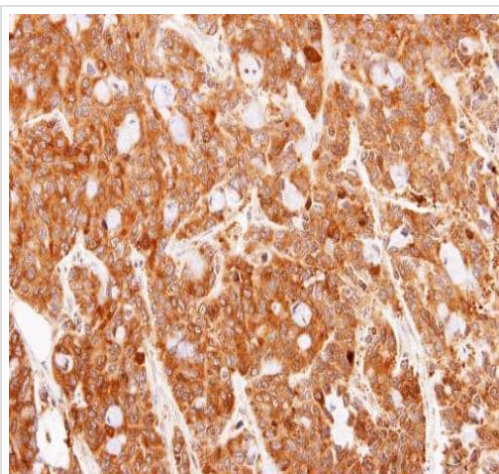
### Post-translational modifications

Phosphorylated on Thr-90 during the M-phase, which leads to a more than 80% decrease in enzymatic activity.

### Cellular localization

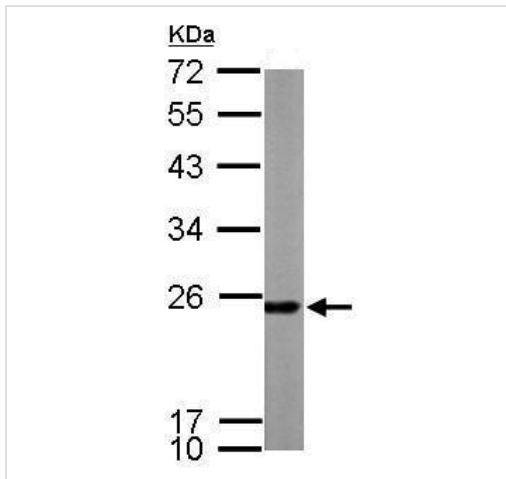
Cytoplasm. Melanosome. Identified by mass spectrometry in melanosome fractions from stage I to stage IV.

## Images



Paraffin-embedded HT-29 (human colorectal adenocarcinoma cell line) xenograft tissue stained for Peroxiredoxin 1/PAG using ab228780 at 1/100 dilution in immunohistochemical analysis.

Immunohistochemistry (Formalin/PFA-fixed paraffin-embedded sections) - Anti-Peroxiredoxin 1/PAG antibody (ab228780)

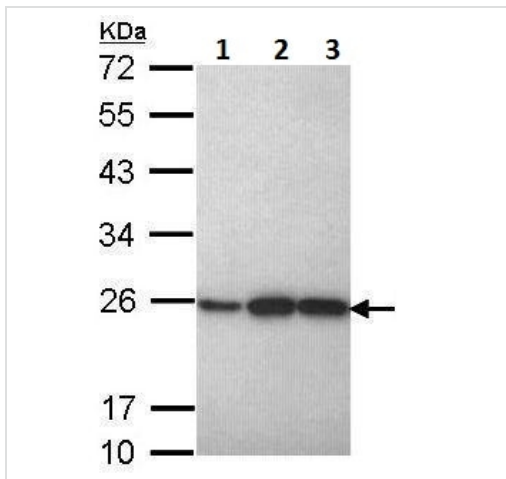


Western blot - Anti-Peroxiredoxin 1/PAG antibody (ab228780)

Anti-Peroxiredoxin 1/PAG antibody (ab228780) at 1/1000 dilution +  
 Mouse brain lysate at 50 µg

**Predicted band size:** 22 kDa

12% SDS-PAGE gel.



Western blot - Anti-Peroxiredoxin 1/PAG antibody (ab228780)

**All lanes :** Anti-Peroxiredoxin 1/PAG antibody (ab228780) at 1/1000 dilution

**Lane 1 :** NCI-H1299 (human lung carcinoma cell line) whole cell lysate

**Lane 2 :** HeLa (human epithelial cell line from cervix adenocarcinoma) whole cell lysate

**Lane 3 :** HepG2 (human liver hepatocellular carcinoma cell line) whole cell lysate

Lysates/proteins at 30 µg per lane.

**Predicted band size:** 22 kDa

12 % SDS-PAGE gel.

**Please note:** All products are "FOR RESEARCH USE ONLY. NOT FOR USE IN DIAGNOSTIC PROCEDURES"

**Our Promise to you: Quality guaranteed and expert technical support**

- Replacement or refund for products not performing as stated on the datasheet
- Valid for 12 months from date of delivery
- Response to your inquiry within 24 hours
- We provide support in Chinese, English, French, German, Japanese and Spanish
- Extensive multi-media technical resources to help you

- We investigate all quality concerns to ensure our products perform to the highest standards

If the product does not perform as described on this datasheet, we will offer a refund or replacement. For full details of the Abpromise, please visit <https://www.abcam.com/abpromise> or contact our technical team.

#### **Terms and conditions**

---

- Guarantee only valid for products bought direct from Abcam or one of our authorized distributors