

Product datasheet

Anti-Peroxiredoxin 3/PRDX3 antibody ab222807

[4 References](#) [5 Images](#)

Overview

Product name	Anti-Peroxiredoxin 3/PRDX3 antibody
Description	Rabbit polyclonal to Peroxiredoxin 3/PRDX3
Host species	Rabbit
Tested applications	Suitable for: WB, IHC-P, ICC/IF, IP
Species reactivity	Reacts with: Mouse, Human
Immunogen	Recombinant fragment corresponding to Human Peroxiredoxin 3/PRDX3 aa 50 to the C-terminus. Database link: P30048 Run BLAST with Run BLAST with
Positive control	WB: HeLa, HepG2 and MCF7 whole cell lysates; Mouse heart, liver, brain, lung, kidney and stomach lysates. IHC-P: Human lung cancer and renal tissues. ICC/IF: HepG2 cells. IP: HeLa whole cell lysate.
General notes	<p>The Life Science industry has been in the grips of a reproducibility crisis for a number of years. Abcam is leading the way in addressing this with our range of recombinant monoclonal antibodies and knockout edited cell lines for gold-standard validation. Please check that this product meets your needs before purchasing.</p> <p>If you have any questions, special requirements or concerns, please send us an inquiry and/or contact our Support team ahead of purchase. Recommended alternatives for this product can be found below, along with publications, customer reviews and Q&As</p>

Properties

Form	Liquid
Storage instructions	Shipped at 4°C. Store at +4°C short term (1-2 weeks). Upon delivery aliquot. Store at -20°C long term. Avoid freeze / thaw cycle.
Storage buffer	pH: 7.40 Preservative: 0.03% Proclin 300 Constituents: 50% Glycerol (glycerin, glycerine), PBS
Purity	Protein G purified
Purification notes	Purity >95%.
Clonality	Polyclonal

Isotype

IgG

Applications

The Abpromise guarantee

Our **Abpromise guarantee** covers the use of ab222807 in the following tested applications.

The application notes include recommended starting dilutions; optimal dilutions/concentrations should be determined by the end user.

Application	Abreviews	Notes
WB		1/500 - 1/5000. Predicted molecular weight: 28 kDa.
IHC-P		1/20 - 1/200.
ICC/IF		1/50 - 1/200.
IP		1/200 - 1/2000.

Target

Function

Involved in redox regulation of the cell. Protects radical-sensitive enzymes from oxidative damage by a radical-generating system. Acts synergistically with MAP3K13 to regulate the activation of NF-kappa-B in the cytosol.

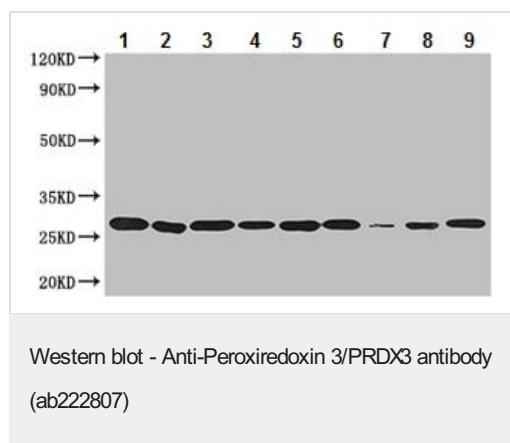
Sequence similarities

Belongs to the ahpC/TSA family.
Contains 1 thioredoxin domain.

Cellular localization

Mitochondrion.

Images



All lanes : Anti-Peroxiredoxin 3/PRDX3 antibody (ab222807) at 1/500 dilution

Lane 1 : HeLa (human epithelial cell line from cervix adenocarcinoma) whole cell lysate

Lane 2 : HepG2 (human liver hepatocellular carcinoma cell line) whole cell lysate

Lane 3 : MCF7 (human breast adenocarcinoma cell line) whole cell lysate

Lane 4 : Mouse heart lysate

Lane 5 : Mouse liver lysate

Lane 6 : Mouse brain lysate

Lane 7 : Mouse lung lysate

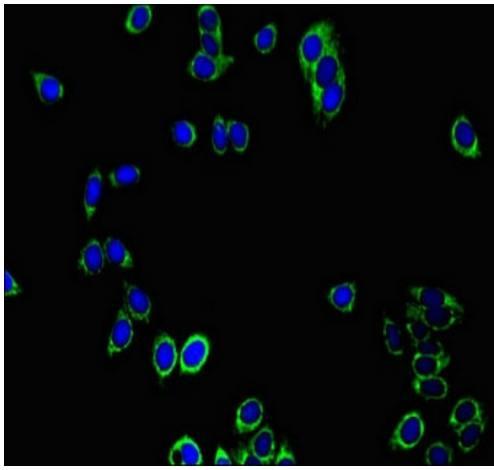
Lane 8 : Mouse kidney lysate

Lane 9 : Mouse stomach lysate

Secondary

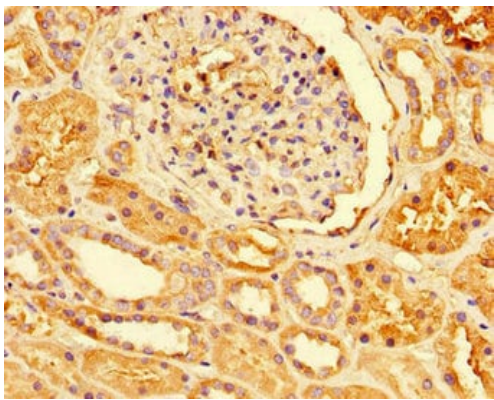
All lanes : Goat polyclonal to rabbit IgG at 1/50000 dilution

Predicted band size: 28 kDa



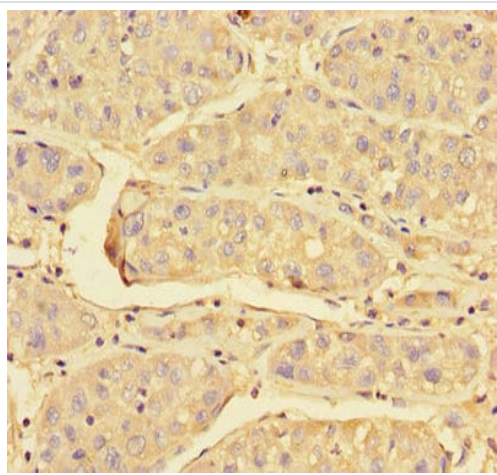
Immunocytochemistry/ Immunofluorescence - Anti-Peroxiredoxin 3/PRDX3 antibody (ab222807)

HepG2 (human liver hepatocellular carcinoma cell line) cells stained for Peroxiredoxin 3/PRDX3 (green) using ab222807 at 1/100 dilution in ICC/IF, followed by Alexa Fluor 488[®] conjugated Goat Anti-Rabbit IgG (H+L).



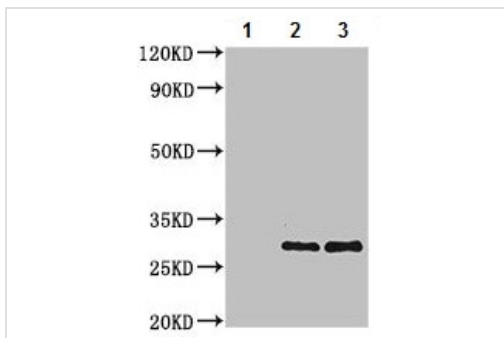
Immunohistochemistry (Formalin/PFA-fixed paraffin-embedded sections) - Anti-Peroxiredoxin 3/PRDX3 antibody (ab222807)

Paraffin-embedded human renal tissue stained for Peroxiredoxin 3/PRDX3 using ab222807 at 1/100 dilution in immunohistochemical analysis.



Immunohistochemistry (Formalin/PFA-fixed paraffin-embedded sections) - Anti-Peroxiredoxin 3/PRDX3 antibody (ab222807)

Paraffin-embedded human lung cancer tissue stained for Peroxiredoxin 3/PRDX3 using ab222807 at 1/100 dilution in immunohistochemical analysis.



Immunoprecipitation - Anti-Peroxiredoxin 3/PRDX3 antibody (ab222807)

Peroxiredoxin 3/PRDX3 was immunoprecipitated from HeLa (human epithelial cell line from cervix adenocarcinoma) whole cell lysate with ab222807 at 1/200 dilution. Western blot was performed from the immunoprecipitate using ab222807, followed by HRP-conjugated Protein G secondary antibody at 1/2000 dilution.

Lane 1: Rabbit monoclonal IgG (1 μ g) instead of ab222807 in HeLa whole cell lysate.

Lane 2: ab222807 IP in HeLa whole cell lysate (500 μ g).

Lane 3: HeLa whole cell lysate (10 μ g) (Input).

Please note: All products are "FOR RESEARCH USE ONLY. NOT FOR USE IN DIAGNOSTIC PROCEDURES"

Our Promise to you: Quality guaranteed and expert technical support

- Replacement or refund for products not performing as stated on the datasheet
- Valid for 12 months from date of delivery

- Response to your inquiry within 24 hours
- We provide support in Chinese, English, French, German, Japanese and Spanish
- Extensive multi-media technical resources to help you
- We investigate all quality concerns to ensure our products perform to the highest standards

If the product does not perform as described on this datasheet, we will offer a refund or replacement. For full details of the Abpromise, please visit <https://www.abcam.com/abpromise> or contact our technical team.

Terms and conditions

- Guarantee only valid for products bought direct from Abcam or one of our authorized distributors