

Product datasheet

PE/Texas Red® Anti-CD8 alpha antibody [53-6.7] ab25294

[7 References](#) [1 Image](#)

Overview

Product name	PE/Texas Red® Anti-CD8 alpha antibody [53-6.7]
Description	PE/Texas Red® Rat monoclonal [53-6.7] to CD8 alpha
Host species	Rat
Conjugation	PE/Texas Red®. Ex: 496nm, Em: 613nm
Specificity	ab25194 recognises CD8 alpha. In vivo and in vitro treatment with ab25294 effectively depletes CD8a+ cells. It also blocks allogeneic help specific for class I MHC antigens and T cell responses to IL-2.
Tested applications	Suitable for: Flow Cyt
Species reactivity	Reacts with: Mouse
Immunogen	Tissue, cells or virus corresponding to CD8 alpha. Spleen cells or thymocyte membranes
General notes	<p>The Life Science industry has been in the grips of a reproducibility crisis for a number of years. Abcam is leading the way in addressing this with our range of recombinant monoclonal antibodies and knockout edited cell lines for gold-standard validation. Please check that this product meets your needs before purchasing.</p> <p>If you have any questions, special requirements or concerns, please send us an inquiry and/or contact our Support team ahead of purchase. Recommended alternatives for this product can be found below, along with publications, customer reviews and Q&As</p>

Properties

Form	Liquid
Storage instructions	Shipped at 4°C. Store at +4°C. Store In the Dark.
Storage buffer	pH: 7.1 Preservative: 0.09% Sodium azide Constituents: PBS, 16% Sucrose Stabilising agent.
Purity	Affinity purified
Clonality	Monoclonal

Clone number	53-6.7
Isotype	IgG2a
Light chain type	kappa

Applications

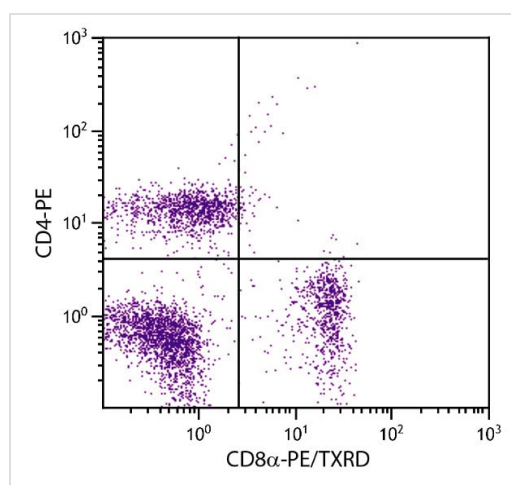
The Abpromise guarantee Our **Abpromise guarantee** covers the use of ab25294 in the following tested applications. The application notes include recommended starting dilutions; optimal dilutions/concentrations should be determined by the end user.

Application	Abreviews	Notes
Flow Cyt		Use 0.2µg for 10 ⁶ cells.

Target

Function	Identifies cytotoxic/suppressor T-cells that interact with MHC class I bearing targets. CD8 is thought to play a role in the process of T-cell mediated killing. CD8 alpha chains binds to class I MHC molecules alpha-3 domains.
Involvement in disease	Defects in CD8A are a cause of familial CD8 deficiency (CD8 deficiency) [MIM:608957]. Familial CD8 deficiency is a novel autosomal recessive immunologic defect characterized by absence of CD8+ cells, leading to recurrent bacterial infections.
Sequence similarities	Contains 1 Ig-like V-type (immunoglobulin-like) domain.
Post-translational modifications	All of the five most carboxyl-terminal cysteines form inter-chain disulfide bonds in dimers and higher multimers, while the four N-terminal cysteines do not.
Cellular localization	Secreted and Cell membrane.

Images



Flow cytometry analysis of BALB/c mouse splenocytes labelling CD8 alpha with ab25294 at 0.1 µg/10⁶cells and CD4 with **ab25496**.

Flow Cytometry - PE/Texas Red® Anti-CD8 alpha antibody [53-6.7] (ab25294)

Please note: All products are "FOR RESEARCH USE ONLY. NOT FOR USE IN DIAGNOSTIC PROCEDURES"

Our Abpromise to you: Quality guaranteed and expert technical support

- Replacement or refund for products not performing as stated on the datasheet
- Valid for 12 months from date of delivery
- Response to your inquiry within 24 hours

- We provide support in Chinese, English, French, German, Japanese and Spanish
- Extensive multi-media technical resources to help you
- We investigate all quality concerns to ensure our products perform to the highest standards

If the product does not perform as described on this datasheet, we will offer a refund or replacement. For full details of the Abpromise, please visit <https://www.abcam.com/abpromise> or contact our technical team.

Terms and conditions

- Guarantee only valid for products bought direct from Abcam or one of our authorized distributors