

## Product datasheet

# Anti-PEX7 antibody ab167036

[2 Images](#)

### Overview

---

<b>Product name</b>	Anti-PEX7 antibody
<b>Description</b>	Rabbit polyclonal to PEX7
<b>Host species</b>	Rabbit
<b>Tested applications</b>	<b>Suitable for:</b> WB, IHC-P
<b>Species reactivity</b>	<b>Reacts with:</b> Mouse, Human
<b>Immunogen</b>	Synthetic peptide derived from internal sequence of Human PEX7.
<b>Positive control</b>	NIH-3T3 cell extract; Human breast tissue.
<b>General notes</b>	<p>The Life Science industry has been in the grips of a reproducibility crisis for a number of years. Abcam is leading the way in addressing this with our range of recombinant monoclonal antibodies and knockout edited cell lines for gold-standard validation. Please check that this product meets your needs before purchasing.</p> <p>If you have any questions, special requirements or concerns, please send us an inquiry and/or contact our Support team ahead of purchase. Recommended alternatives for this product can be found below, along with publications, customer reviews and Q&amp;As</p>

### Properties

---

<b>Form</b>	Liquid
<b>Storage instructions</b>	Shipped at 4°C. Store at -20°C.
<b>Storage buffer</b>	pH: 7.40 Preservative: 0.02% Sodium azide Constituents: 49% PBS, 50% Glycerol (glycerin, glycerine), 0.88% Sodium chloride
<b>Purity</b>	PBS without Mg <sup>2+</sup> and Ca <sup>2+</sup> .
<b>Clonality</b>	Immunogen affinity purified
<b>Isotype</b>	Polyclonal
<b>Isotype</b>	IgG

### Applications

---

**The Abpromise guarantee**

Our **Abpromise guarantee** covers the use of ab167036 in the following tested applications.

The application notes include recommended starting dilutions; optimal dilutions/concentrations should be determined by the end user.

Application	Abreviews	Notes
WB		1/500 - 1/1000. Predicted molecular weight: 36 kDa.
IHC-P		Use a concentration of 5 µg/ml.

---

**Target****Function**

Binds to the N-terminal PTS2-type peroxisomal targeting signal and plays an essential role in peroxisomal protein import.

**Tissue specificity**

Ubiquitous. Highest expression in pancreas, skeletal muscle and heart.

**Involvement in disease**

Defects in PEX7 are the cause of peroxisome biogenesis disorder complementation group 11 (PBD-CG11) [MIM:614879]. PBD refers to a group of peroxisomal disorders arising from a failure of protein import into the peroxisomal membrane or matrix. The PBD group is comprised of four disorders: Zellweger syndrome (ZWS), neonatal adrenoleukodystrophy (NALD), infantile Refsum disease (IRD), and classical rhizomelic chondrodysplasia punctata (RCDP). ZWS, NALD and IRD are distinct from RCDP and constitute a clinical continuum of overlapping phenotypes known as the Zellweger spectrum. The PBD group is genetically heterogeneous with at least 13 distinct genetic groups as concluded from complementation studies.

Defects in PEX7 are the cause of rhizomelic chondrodysplasia punctata type 1 (RCDP1) [MIM:215100]. RCDP1 is characterized by rhizomelic shortening of femur and humerus, vertebral disorders, cataract, cutaneous lesions and severe mental retardation.

Defects in PEX7 are the cause of peroxisome biogenesis disorder 9B (PBD9B) [MIM:614879]. A peroxisome biogenesis disorder with unusually mild clinical and biochemical manifestations.

Affected individuals manifest a variable phenotype similar to, and in some cases indistinguishable from, classic Refsum disease. Variable features include ocular abnormalities, sensorimotor neuropathy, ichthyosis, deafness, chondrodysplasia punctata without rhizomelia or growth failure.

**Sequence similarities**

Belongs to the WD repeat peroxin-7 family.

Contains 6 WD repeats.

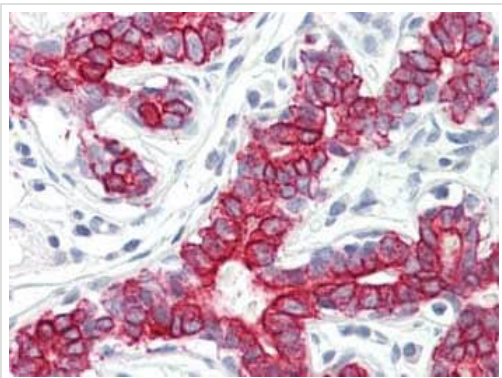
**Cellular localization**

Peroxisome. Cytoplasm.

---

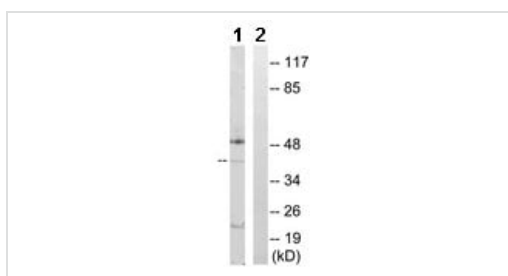
**Images**

---



Immunohistochemistry (Formalin/PFA-fixed paraffin-embedded sections) - Anti-PEX7 antibody (ab167036)

Immunohistochemical analysis of formalin-fixed, paraffin-embedded Human Breast tissue labeling PEX7 with ab167036 at 5 µg/ml.



Western blot - Anti-PEX7 antibody (ab167036)

**All lanes :** Anti-PEX7 antibody (ab167036) at 1/500 dilution

**Lane 1 :** NIH-3T3 cell extract

**Lane 2 :** NIH-3T3 cell extract with immunizing peptide

**Predicted band size:** 36 kDa

**Please note:** All products are "FOR RESEARCH USE ONLY. NOT FOR USE IN DIAGNOSTIC PROCEDURES"

### Our Abpromise to you: Quality guaranteed and expert technical support

- Replacement or refund for products not performing as stated on the datasheet
- Valid for 12 months from date of delivery
- Response to your inquiry within 24 hours
- We provide support in Chinese, English, French, German, Japanese and Spanish
- Extensive multi-media technical resources to help you
- We investigate all quality concerns to ensure our products perform to the highest standards

If the product does not perform as described on this datasheet, we will offer a refund or replacement. For full details of the Abpromise, please visit <https://www.abcam.com/abpromise> or contact our technical team.

### Terms and conditions

- Guarantee only valid for products bought direct from Abcam or one of our authorized distributors