


Product datasheet

Anti-PFKFB1 antibody ab155564

[1 References](#) [3 Images](#)

Overview

Product name	Anti-PFKFB1 antibody
Description	Rabbit polyclonal to PFKFB1
Host species	Rabbit
Tested applications	Suitable for: WB, IHC-P, ICC/IF
Species reactivity	Reacts with: Mouse, Rat, Human Predicted to work with: Sheep, Rabbit, Horse, Cow, Chimpanzee, Orangutan 
Immunogen	Synthetic peptide within Mouse PFKFB1 aa 1-100 (N terminal) conjugated to keyhole limpet haemocyanin. The exact sequence is proprietary. Database link: P70266
Positive control	This antibody gave a positive signal in Human, Mouse and Rat Liver tissue lysates. This antibody gave a positive result when used in the following formaldehyde fixed cell lines: HepG2 This antibody gave a positive result in IHC in the following FFPE tissue: Mouse normal liver
General notes	<p>The Life Science industry has been in the grips of a reproducibility crisis for a number of years. Abcam is leading the way in addressing this with our range of recombinant monoclonal antibodies and knockout edited cell lines for gold-standard validation. Please check that this product meets your needs before purchasing.</p> <p>If you have any questions, special requirements or concerns, please send us an inquiry and/or contact our Support team ahead of purchase. Recommended alternatives for this product can be found below, along with publications, customer reviews and Q&As</p>

Properties

Form	Liquid
Storage instructions	Shipped at 4°C. Store at +4°C short term (1-2 weeks). Upon delivery aliquot. Store at -20°C or -80°C. Avoid freeze / thaw cycle.
Storage buffer	pH: 7.40 Preservative: 0.02% Sodium azide Constituent: PBS
	Batches of this product that have a concentration < 1mg/ml may have BSA added as a stabilising agent. If you would like information about the formulation of a specific lot, please contact our scientific support team who will be happy to help.

Purity	Immunogen affinity purified
Clonality	Polyclonal
Isotype	IgG

Applications

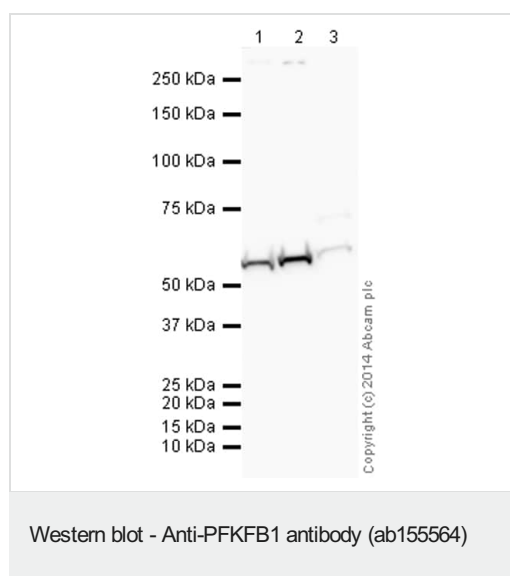
The Abpromise guarantee Our **Abpromise guarantee** covers the use of ab155564 in the following tested applications. The application notes include recommended starting dilutions; optimal dilutions/concentrations should be determined by the end user.

Application	Abreviews	Notes
WB		Use a concentration of 1 µg/ml. Detects a band of approximately 55 kDa (predicted molecular weight: 55 kDa).
IHC-P		Use a concentration of 1 µg/ml. Perform heat mediated antigen retrieval with Tris/EDTA buffer pH 9.0 before commencing with IHC staining protocol.
ICC/IF		Use a concentration of 5 µg/ml.

Target

Function	Synthesis and degradation of fructose 2,6-bisphosphate.
Tissue specificity	Liver.
Sequence similarities	In the C-terminal section; belongs to the phosphoglycerate mutase family.

Images



All lanes : Anti-PFKFB1 antibody (ab155564) at 1 µg/ml (Milk blocking 3%)

Lane 1 : Liver (Mouse) Tissue Lysate

Lane 2 : Liver (Rat) Tissue Lysate

Lane 3 : Liver (Human) Tissue Lysate - adult normal tissue

Lysates/proteins at 25 µg per lane.

Secondary

All lanes : Goat Anti-Rabbit IgG H&L (HRP) (**ab97051**) at 1/50000 dilution

Developed using the ECL technique.

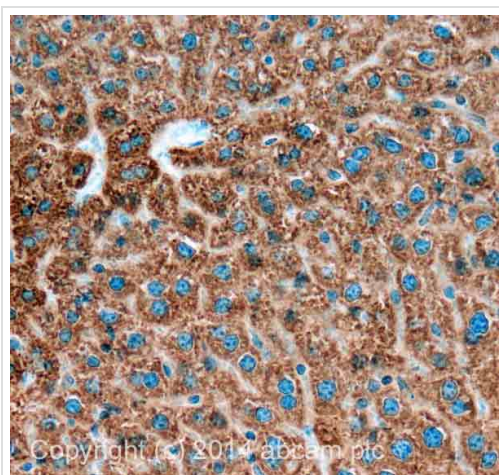
Performed under reducing conditions.

Predicted band size: 55 kDa

Observed band size: 55 kDa

Exposure time: 16 seconds

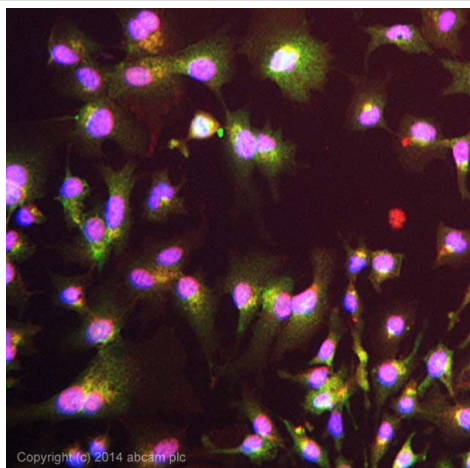
This blot was produced using a 4-12% Bis-tris gel under the MOPS buffer system. The gel was run at 200V for 50 minutes before being transferred onto a Nitrocellulose membrane at 30V for 70 minutes. The membrane was then blocked for an hour using 2% Bovine Serum Albumin before being incubated with ab155564 overnight at 4°C. Antibody binding was detected using an anti-rabbit antibody conjugated to HRP, and visualised using ECL development solution **ab133406**



Immunohistochemistry (Formalin/PFA-fixed paraffin-embedded sections) - Anti-TPKFB1 antibody (ab155564)

IHC image of TPKFB1 staining in Mouse normal liver formalin fixed paraffin embedded tissue section, performed on a Leica Bond™ system using the standard protocol B. The section was pre-treated using heat mediated antigen retrieval (EDTA based pH 9.0 solution, epitope retrieval solution 2) for 20 mins. The section was then incubated with ab155564, 1 µg/ml, for 15 mins at room temperature. A Goat anti-Rabbit biotinylated secondary antibody was used to detect the primary, and visualized using an HRP conjugated ABC system. DAB was used as the chromogen. The section was then counterstained with haematoxylin and mounted with DPX.

For other IHC staining systems (automated and non-automated) customers should optimize variable parameters such as antigen retrieval conditions, primary antibody concentration and antibody incubation times.



Immunocytochemistry/ Immunofluorescence - Anti-PFKFB1 antibody (ab155564)

ICC/IF image of ab155564 stained HepG2 cells. The cells were 4% formaldehyde fixed (10 min) and then incubated in 1%BSA / 10% normal goat serum / 0.3M glycine in 0.1% PBS-Tween for 1h to permeabilise the cells and block non-specific protein-protein interactions. The cells were then incubated with the antibody ab155564 at 5µg/ml overnight at +4°C. The secondary antibody (pseudo-colored green) was Alexa Fluor® 488 goat anti- rabbit (**ab150081**) IgG (H+L) preadsorbed, used at a 1/1000 dilution for 1h. Alexa Fluor® 594 WGA was used to label plasma membranes (pseudo-colored red) at a 1/200 dilution for 1h at room temperature. DAPI was used to stain the cell nuclei (pseudo-colored blue) at a concentration of 1.43µM for 1hour at room temperature.

Please note: All products are "FOR RESEARCH USE ONLY. NOT FOR USE IN DIAGNOSTIC PROCEDURES"

Our Abpromise to you: Quality guaranteed and expert technical support

- Replacement or refund for products not performing as stated on the datasheet
- Valid for 12 months from date of delivery
- Response to your inquiry within 24 hours
- We provide support in Chinese, English, French, German, Japanese and Spanish
- Extensive multi-media technical resources to help you
- We investigate all quality concerns to ensure our products perform to the highest standards

If the product does not perform as described on this datasheet, we will offer a refund or replacement. For full details of the Abpromise, please visit <https://www.abcam.com/abpromise> or contact our technical team.

Terms and conditions

- Guarantee only valid for products bought direct from Abcam or one of our authorized distributors