




Product datasheet

Anti-PGLS antibody ab229980

4 Images

Overview

Product name	Anti-PGLS antibody
Description	Rabbit polyclonal to PGLS
Host species	Rabbit
Tested applications	Suitable for: IHC-P, WB, IP
Species reactivity	Reacts with: Mouse, Human Predicted to work with: Cow 
Immunogen	Recombinant full length protein corresponding to Human PGLS aa 1 to the C-terminus. Database link: O95336  Run BLAST with  Run BLAST with
Positive control	WB: Mouse liver and brain lysates; U-251 MG, THP-1, HepG2 and HeLa whole cell lysates. IHC-P: Human thyroid and tonsil tissues. IP: U-251 MG whole cell lysate.
General notes	<p>The Life Science industry has been in the grips of a reproducibility crisis for a number of years. Abcam is leading the way in addressing this with our range of recombinant monoclonal antibodies and knockout edited cell lines for gold-standard validation. Please check that this product meets your needs before purchasing.</p> <p>If you have any questions, special requirements or concerns, please send us an inquiry and/or contact our Support team ahead of purchase. Recommended alternatives for this product can be found below, along with publications, customer reviews and Q&As</p>

Properties

Form	Liquid
Storage instructions	Shipped at 4°C. Store at +4°C short term (1-2 weeks). Upon delivery aliquot. Store at -20°C long term. Avoid freeze / thaw cycle.
Storage buffer	pH: 7.30 Preservative: 0.02% Sodium azide Constituents: PBS, 50% Glycerol (glycerin, glycerine)
Purity	Immunogen affinity purified
Clonality	Polyclonal
Isotype	IgG

Applications

The Abpromise guarantee

Our **Abpromise guarantee** covers the use of ab229980 in the following tested applications.

The application notes include recommended starting dilutions; optimal dilutions/concentrations should be determined by the end user.

Application	Abreviews	Notes
IHC-P		1/20 - 1/200.
WB		1/1000 - 1/5000. Predicted molecular weight: 28 kDa.
IP		1/200 - 1/2000.

Target

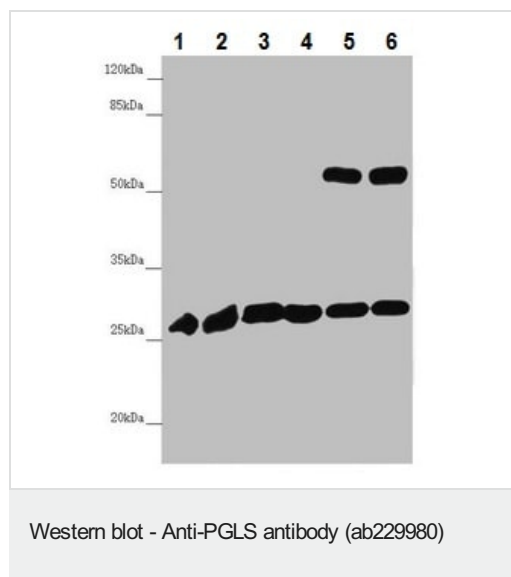
Relevance

PGLS belongs to the glucosamine/galactosamine-6-phosphate isomerase family, 6-phosphogluconolactonase subfamily. It is implicated in the hydrolysis of 6-phosphogluconolactone to 6-phosphogluconate.

Cellular localization

Cytoplasmic

Images



All lanes : Anti-PGLS antibody (ab229980) at 1/1000 dilution

Lane 1 : Mouse liver lysate

Lane 2 : Mouse brain lysate

Lane 3 : U-251 MG (human brain glioma cell line) whole cell lysate

Lane 4 : THP-1 (human monocytic leukemia cell line) whole cell lysate

Lane 5 : HepG2 (human liver hepatocellular carcinoma cell line) whole cell lysate

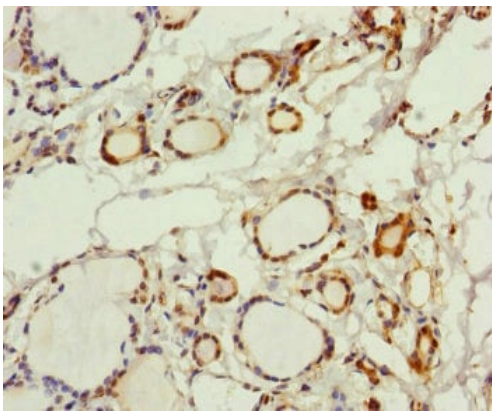
Lane 6 : HeLa (human epithelial cell line from cervix adenocarcinoma) whole cell lysate

Secondary

All lanes : Goat polyclonal to rabbit IgG at 1/10000 dilution

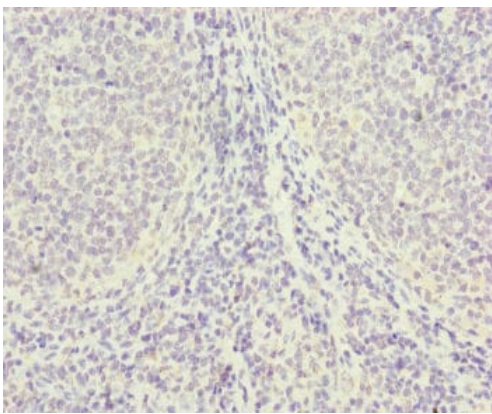
Predicted band size: 28 kDa

Observed band size: 28,52 kDa



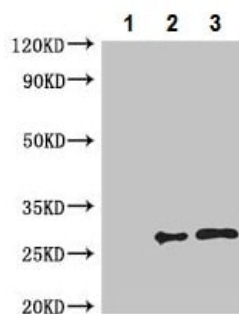
Immunohistochemistry (Formalin/PFA-fixed paraffin-embedded sections) - Anti-PGLS antibody (ab229980)

Paraffin-embedded human thyroid tissue stained for PGLS using ab229980 at 1/100 dilution in immunohistochemical analysis.



Immunohistochemistry (Formalin/PFA-fixed paraffin-embedded sections) - Anti-PGLS antibody (ab229980)

Paraffin-embedded human tonsil tissue stained for PGLS using ab229980 at 1/100 dilution in immunohistochemical analysis.



Immunoprecipitation - Anti-PGLS antibody (ab229980)

PGLS was immunoprecipitated from 500 µg U-251 MG (human brain glioma cell line) whole cell lysate with 4 µg ab229980.

Lane 1: Rabbit monoclonal IgG (1 µg) IP in U-251 MG whole cell lysate.

Lane 2: ab229980 IP in U-251 MG whole cell lysate.

Lane 3: U-251 MG whole cell lysate 20 µg (Input).

For western blotting, an HRP-conjugated light chain specific antibody was used as the Secondary antibody at 1/50000 dilution.

Please note: All products are "FOR RESEARCH USE ONLY. NOT FOR USE IN DIAGNOSTIC PROCEDURES"

Our Abpromise to you: Quality guaranteed and expert technical support

- Replacement or refund for products not performing as stated on the datasheet
- Valid for 12 months from date of delivery
- Response to your inquiry within 24 hours

- We provide support in Chinese, English, French, German, Japanese and Spanish
- Extensive multi-media technical resources to help you
- We investigate all quality concerns to ensure our products perform to the highest standards

If the product does not perform as described on this datasheet, we will offer a refund or replacement. For full details of the Abpromise, please visit <https://www.abcam.com/abpromise> or contact our technical team.

Terms and conditions

- Guarantee only valid for products bought direct from Abcam or one of our authorized distributors