

## Product datasheet

### Anti-PGM1 antibody [EPR15241] $\alpha$ b192876

Recombinant RabMAb

[2 References](#) [6 Images](#)

#### Overview

Product name	Anti-PGM1 antibody [EPR15241]
Description	Rabbit monoclonal [EPR15241] to PGM1
Host species	Rabbit
Tested applications	<b>Suitable for:</b> ICC/IF, IP, WB, Flow Cyt (Intra)
Species reactivity	<b>Reacts with:</b> Mouse, Rat, Human
Immunogen	Synthetic peptide. This information is proprietary to Abcam and/or its suppliers.
Positive control	HepG2, 293T, Human fetal liver and fetal heart lysates; Mouse brain, heart, kidney, spleen, NIH 3T3 and RAW 264.7 lysates; Rat spleen, kidney, C6 and PC12 lysates; HeLa cells.
General notes	<p>This product is a recombinant monoclonal antibody, which offers several advantages including:</p> <ul style="list-style-type: none"> <li>- High batch-to-batch consistency and reproducibility</li> <li>- Improved sensitivity and specificity</li> <li>- Long-term security of supply</li> <li>- Animal-free production</li> </ul> <p>For more information <a href="#">see here</a>.</p> <p>Our RabMAb<sup>®</sup> technology is a patented hybridoma-based technology for making rabbit monoclonal antibodies. For details on our patents, please refer to <a href="#">RabMAb<sup>®</sup> patents</a>.</p>

#### Properties

Form	Liquid
Storage instructions	Shipped at 4°C. Store at +4°C short term (1-2 weeks). Upon delivery aliquot. Store at -20°C long term. Avoid freeze / thaw cycle.
Storage buffer	<p>pH: 7.2</p> <p>Preservative: 0.01% Sodium azide</p> <p>Constituents: 40% Glycerol (glycerin, glycerine), 59% PBS, 0.05% BSA</p>
Purity	Protein A purified
Clonality	Monoclonal
Clone number	EPR15241
Isotype	IgG

## Applications

### The Abpromise guarantee

Our **Abpromise guarantee** covers the use of ab192876 in the following tested applications.

The application notes include recommended starting dilutions; optimal dilutions/concentrations should be determined by the end user.

Application	Abreviews	Notes
ICC/IF		1/500.
IP		1/60.
WB		1/1000 - 1/10000. Detects a band of approximately 61 kDa (predicted molecular weight: 61 kDa).
Flow Cyt (Intra)		Use at an assay dependent concentration.

## Target

### Function

This enzyme participates in both the breakdown and synthesis of glucose.

### Involvement in disease

Defects in PGM1 are the cause of glycogen storage disease type 14 (GSD14) [MIM:612934]. A metabolic disorder resulting in a myopathy characterized by exercise-induced intolerance with episodes of rhabdomyolysis, normal elevation of lactate, and hyperammonemia on a forearm-exercise test.

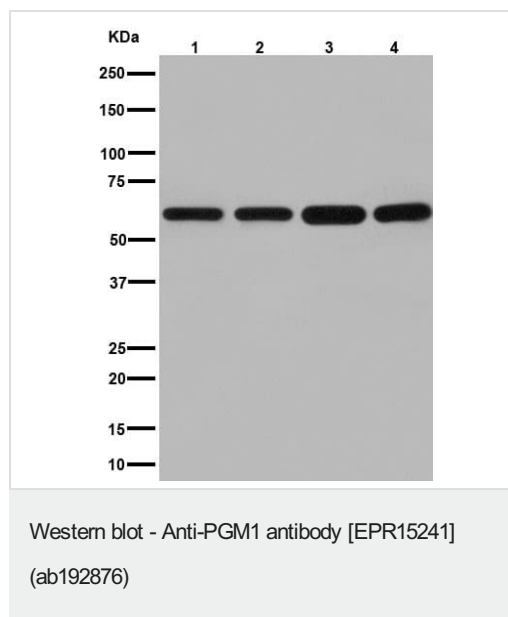
### Sequence similarities

Belongs to the phosphohexose mutase family.

### Cellular localization

Cytoplasm.

## Images



**All lanes :** Anti-PGM1 antibody [EPR15241] (ab192876) at 1/10000 dilution

**Lane 1 :** HepG2 cell lysate

**Lane 2 :** 293T cell lysate

**Lane 3 :** Human fetal liver lysate

**Lane 4 :** Human fetal heart lysate

Lysates/proteins at 20 µg per lane.

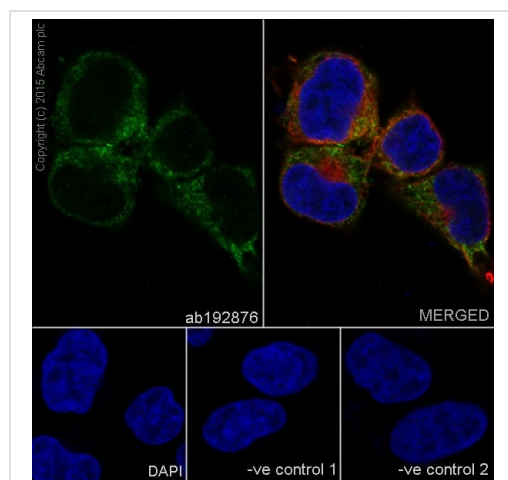
### Secondary

**All lanes :** Anti-Rabbit IgG (HRP), specific to the non-reduced form of IgG at 1/1000 dilution

**Predicted band size:** 61 kDa

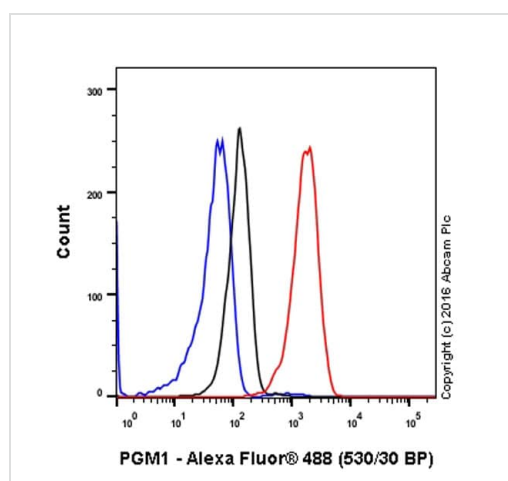
**Observed band size:** 61 kDa

Blocking/Dilution buffer: 5% NFDM/TBST.



Immunocytochemistry/ Immunofluorescence - Anti-PGM1 antibody [EPR15241] (ab192876)

Immunofluorescent analysis of 4% paraformaldehyde-fixed, 0.1% tritonX-100 permeabilized HeLa cells labeling PGM1 with ab192876 at 1/500 dilution followed by Goat anti rabbit IgG (AlexaFluor® 488) (**ab150077**) secondary antibody at 1/400 dilution. Nuclear counter stain is DAPI (blue).

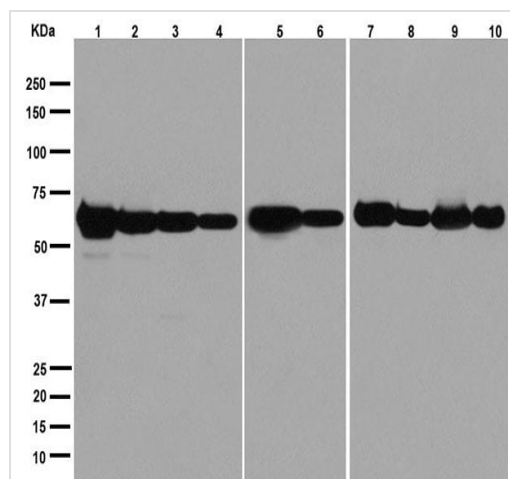


Flow Cytometry (Intracellular) - Anti-PGM1 antibody [EPR15241] (ab192876)

ab192876 staining PGM1 in A549 (human lung carcinoma) by intracellular flow cytometry. Cells were fixed with 4% paraformaldehyde and permeabilised with 90% methanol. The sample was incubated with the primary antibody at a dilution of 1/90. A goat anti rabbit IgG (Alexa Fluor® 488) at a dilution of 1/2000 was used as the secondary antibody.

Isoytype control: Rabbit monoclonal IgG (Black)

Unlabelled control: Cell without incubation with primary antibody and secondary antibody (Blue)



Western blot - Anti-PGM1 antibody [EPR15241]  
(ab192876)

**All lanes** : Anti-PGM1 antibody [EPR15241] (ab192876) at 1/1000 dilution

**Lane 1** : Mouse brain tissue lysate

**Lane 2** : Mouse heart tissue lysate

**Lane 3** : Mouse kidney tissue lysate

**Lane 4** : Mouse spleen tissue lysate

**Lane 5** : Rat kidney tissue lysate

**Lane 6** : Rat spleen tissue lysate

**Lane 7** : C6 cell lysate

**Lane 8** : RAW 264.7 cell lysate

**Lane 9** : PC12 cell lysate

**Lane 10** : NIH/3T3 cell lysate

Lysates/proteins at 10 µg per lane.

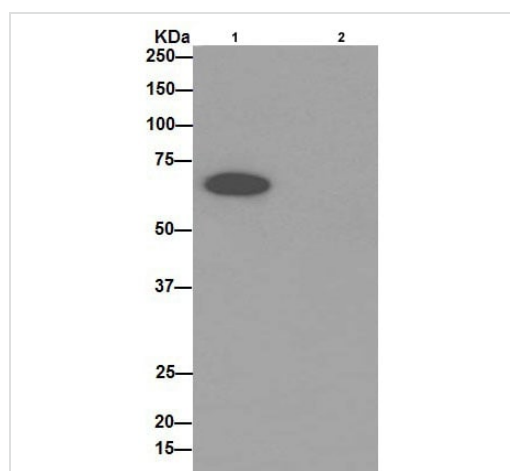
### Secondary

**All lanes** : Goat Anti-Rabbit IgG, (H+L), Peroxidase conjugate at 1/1000 dilution

**Predicted band size:** 61 kDa

**Observed band size:** 61 kDa

Blocking/Dilution buffer: 5% NFDm/TBST.



Immunoprecipitation - Anti-PGM1 antibody  
[EPR15241] (ab192876)

Western blot analysis of PGM1 immunoprecipitated from Human fetal liver lysate with ab192876 at 1/60 dilution. Lane 1: Human fetal liver lysate. Lane 2: PBS instead of Human fetal liver lysate.

Secondary: Anti-Rabbit IgG (HRP), specific to the non-reduced form of IgG at 1/1500 dilution.

Blocking/Dilution buffer: 5% NFDm/TBST.

### Why choose a recombinant antibody?



**Research with confidence**  
Consistent and reproducible results



**Long-term and scalable supply**  
Recombinant technology



**Success from the first experiment**  
Confirmed specificity



**Ethical standards compliant**  
Animal-free production

Anti-PGM1 antibody [EPR15241] (ab192876)

**Please note:** All products are "FOR RESEARCH USE ONLY. NOT FOR USE IN DIAGNOSTIC PROCEDURES"

### Our Abpromise to you: Quality guaranteed and expert technical support

---

- Replacement or refund for products not performing as stated on the datasheet
- Valid for 12 months from date of delivery
- Response to your inquiry within 24 hours
- We provide support in Chinese, English, French, German, Japanese and Spanish
- Extensive multi-media technical resources to help you
- We investigate all quality concerns to ensure our products perform to the highest standards

If the product does not perform as described on this datasheet, we will offer a refund or replacement. For full details of the Abpromise, please visit <https://www.abcam.com/abpromise> or contact our technical team.

### Terms and conditions

---

- Guarantee only valid for products bought direct from Abcam or one of our authorized distributors