


Anti-PGP9 antibody ab86222

[1 References](#) [3 Images](#)

Overview

Product name	Anti-PGP9 antibody
Description	Rabbit polyclonal to PGP9
Host species	Rabbit
Tested applications	Suitable for: WB, IP, IHC-P
Species reactivity	Reacts with: Mouse, Human Predicted to work with: Rat, Rabbit, Horse, Guinea pig, Cow, Dog, Pig, Chimpanzee, Rhesus monkey, Gorilla, Chinese hamster, Orangutan 
Immunogen	Synthetic peptide corresponding to Human PGP9. Database link: Q9NP78
Positive control	HeLa, 293T and mouse NIH3T3 whole cell lysates
General notes	<p>The Life Science industry has been in the grips of a reproducibility crisis for a number of years. Abcam is leading the way in addressing this with our range of recombinant monoclonal antibodies and knockout edited cell lines for gold-standard validation. Please check that this product meets your needs before purchasing.</p> <p>If you have any questions, special requirements or concerns, please send us an inquiry and/or contact our Support team ahead of purchase. Recommended alternatives for this product can be found below, along with publications, customer reviews and Q&As</p>

Properties

Form	Liquid
Storage instructions	Shipped at 4°C. Upon delivery aliquot and store at -20°C. Avoid freeze / thaw cycles.
Storage buffer	pH: 6.8 Preservative: 0.09% Sodium azide Constituents: 0.1% BSA, Tris buffered saline
Purity	Immunogen affinity purified
Clonality	Polyclonal
Isotype	IgG

Applications

The Abpromise guarantee

Our **Abpromise guarantee** covers the use of ab86222 in the following tested applications.

The application notes include recommended starting dilutions; optimal dilutions/concentrations should be determined by the end user.

Application	Abreviews	Notes
WB		1/2000 - 1/10000. Predicted molecular weight: 84 kDa.
IP		Use at 2-5 µg/mg of lysate.
IHC-P		1/50 - 1/200. Perform heat mediated antigen retrieval before commencing with IHC staining protocol.

Target

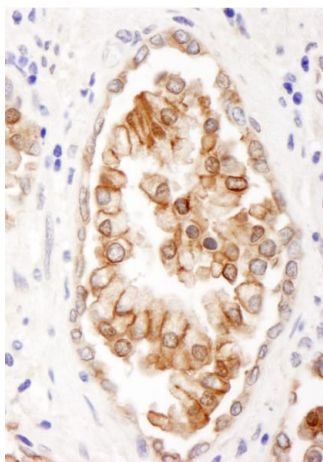
Relevance

The membrane associated protein encoded by this gene is a member of the superfamily of ATP binding cassette (ABC) transporters. ABC proteins transport various molecules across extra and intra cellular membranes. ABC genes are divided into seven distinct subfamilies (ABC1, MDR/TAP, MRP, ALD, OABP, GCN20, White). This protein is a member of the MDR/TAP subfamily. Members of the MDR/TAP subfamily are involved in multidrug resistance as well as antigen presentation. The function of this half transporter has not yet been determined; however, this protein may play a role in lysosomes. Alternative splicing of this gene results in three known products which are likely to have different substrate specifications.

Cellular localization

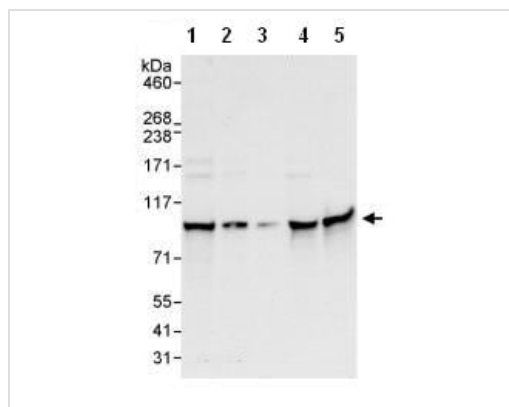
Integral membrane protein. Lysosomal. May be localized in the endoplasmic reticulum.

Images



Immunohistochemistry (Formalin/PFA-fixed paraffin-embedded sections) analysis of human prostate carcinoma tissue labelling PGP9 with ab86222 at 1/200 (1µg/ml). Detection: DAB.

Immunohistochemistry (Formalin/PFA-fixed paraffin-embedded sections) - Anti-PGP9 antibody (ab86222)



Western blot - Anti-PGP9 antibody (ab86222)

All lanes : Anti-PGP9 antibody (ab86222) at 0.04 µg/ml

Lane 1 : HeLa whole cell lysate at 50 µg

Lane 2 : HeLa whole cell lysate at 15 µg

Lane 3 : HeLa whole cell lysate at 5 µg

Lane 4 : 293T whole cell lysate at 50 µg

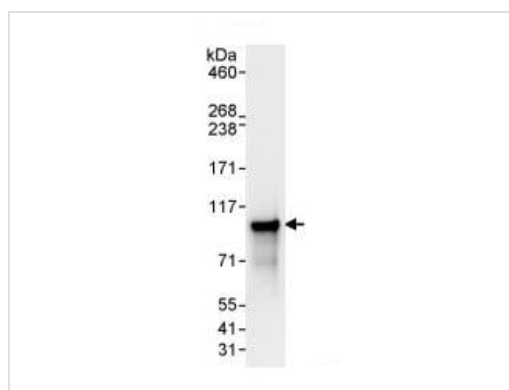
Lane 5 : mouse NIH3T3 whole cell lysate at 50 µg

Developed using the ECL technique.

Predicted band size: 84 kDa

Observed band size: 84 kDa

Exposure time: 10 seconds



Immunoprecipitation - Anti-PGP9 antibody (ab86222)

Detection of human PGP9 in Immunoprecipitates of whole cell lysate from HeLa cells (1 mg for IP, 20% of IP loaded) using ab86222 at 3 µg/mg lysate for IP, and at 1 µg/ml for subsequent Western blot.

Detection: Chemiluminescence with an exposure time of 3 seconds.

Please note: All products are "FOR RESEARCH USE ONLY. NOT FOR USE IN DIAGNOSTIC PROCEDURES"

Our Abpromise to you: Quality guaranteed and expert technical support

- Replacement or refund for products not performing as stated on the datasheet
- Valid for 12 months from date of delivery
- Response to your inquiry within 24 hours
- We provide support in Chinese, English, French, German, Japanese and Spanish
- Extensive multi-media technical resources to help you
- We investigate all quality concerns to ensure our products perform to the highest standards

If the product does not perform as described on this datasheet, we will offer a refund or replacement. For full details of the Abpromise, please visit <https://www.abcam.com/abpromise> or contact our technical team.

Terms and conditions

- Guarantee only valid for products bought direct from Abcam or one of our authorized distributors