




# Anti-PGRMC1 antibody ab224054

9 Images

### Overview

<b>Product name</b>	Anti-PGRMC1 antibody
<b>Description</b>	Rabbit polyclonal to PGRMC1
<b>Host species</b>	Rabbit
<b>Tested applications</b>	<b>Suitable for:</b> WB, IHC-P
<b>Species reactivity</b>	<b>Reacts with:</b> Mouse, Rat, Human <b>Predicted to work with:</b> Cow, Pig, Orangutan 
<b>Immunogen</b>	Recombinant fragment corresponding to Human PGRMC1 aa 1-150. Database link: <a href="#">O00264</a>  <a href="#">Run BLAST with</a>  <a href="#">Run BLAST with</a>
<b>Positive control</b>	IHC-P: Human liver, kidney, endometrium, hippocampus tissue and breast cancer tissue. WB: NIH/3T3, NBT-II and HEK-293 cell lysate. Human liver tissue.
<b>General notes</b>	<p>The Life Science industry has been in the grips of a reproducibility crisis for a number of years. Abcam is leading the way in addressing this with our range of recombinant monoclonal antibodies and knockout edited cell lines for gold-standard validation. Please check that this product meets your needs before purchasing.</p> <p>If you have any questions, special requirements or concerns, please send us an inquiry and/or contact our Support team ahead of purchase. Recommended alternatives for this product can be found below, along with publications, customer reviews and Q&amp;As</p>

### Properties

<b>Form</b>	Liquid
<b>Storage instructions</b>	Shipped at 4°C. Store at +4°C short term (1-2 weeks). Upon delivery aliquot. Store at -20°C long term. Avoid freeze / thaw cycle.
<b>Storage buffer</b>	pH: 7.20 Preservative: 0.02% Sodium azide Constituents: 40% Glycerol (glycerin, glycerine), PBS
<b>Purity</b>	Immunogen affinity purified
<b>Clonality</b>	Polyclonal
<b>Isotype</b>	IgG

## Applications

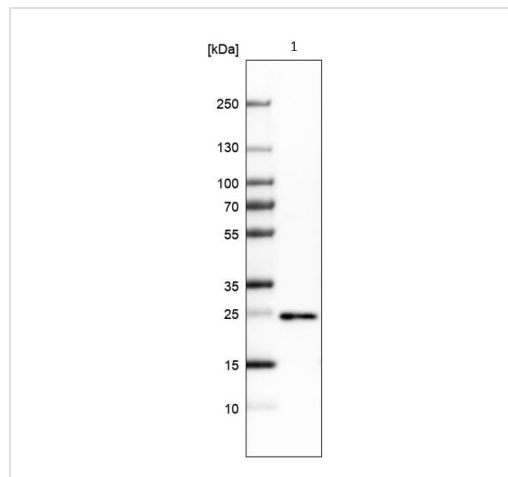
**The Abpromise guarantee** Our **Abpromise guarantee** covers the use of ab224054 in the following tested applications. The application notes include recommended starting dilutions; optimal dilutions/concentrations should be determined by the end user.

Application	Abreviews	Notes
WB		Use a concentration of 0.04 - 0.4 µg/ml. Predicted molecular weight: 22 kDa.
IHC-P		1/500 - 1/1000. Perform heat mediated antigen retrieval with citrate buffer pH 6 before commencing with IHC staining protocol.

## Target

<b>Function</b>	Receptor for progesterone.
<b>Tissue specificity</b>	Widely expressed, with highest expression in liver and kidney.
<b>Sequence similarities</b>	Belongs to the cytochrome b5 family. MAPR subfamily. Contains 1 cytochrome b5 heme-binding domain.
<b>Domain</b>	The cytochrome b5 heme-binding domain lacks the conserved iron-binding His residues at positions 107 and 131.
<b>Cellular localization</b>	Microsome membrane. Endoplasmic reticulum membrane.

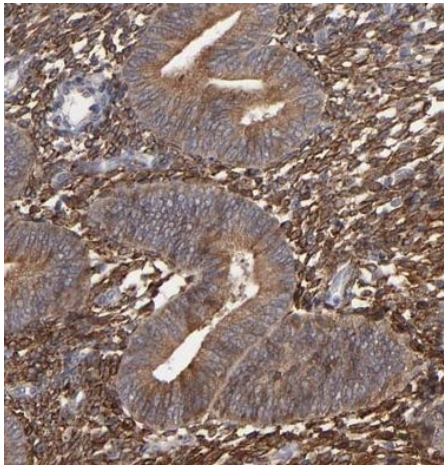
## Images



Anti-PGRMC1 antibody (ab224054) + Human Liver tissue

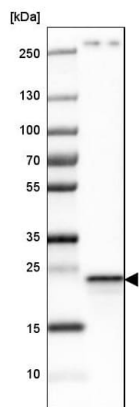
**Predicted band size: 22 kDa**

Western blot - Anti-PGRMC1 antibody (ab224054)



Paraffin embedded human endometrium tissue stained for PGRMC1 with ab224054 (1/500 dilution) in immunohistochemical analysis.

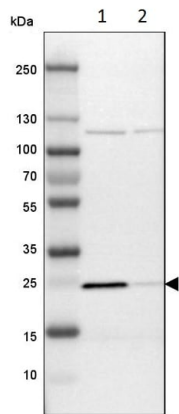
Immunohistochemistry (Formalin/PFA-fixed paraffin-embedded sections) - Anti-PGRMC1 antibody (ab224054)



Anti-PGRMC1 antibody (ab224054) at 1/100 dilution + HEK-293 (human epithelial cell line from embryonic kidney) cell lysate

**Predicted band size: 22 kDa**

Western blot - Anti-PGRMC1 antibody (ab224054)



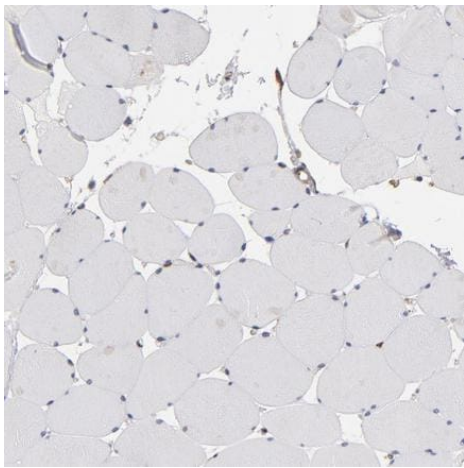
Western blot - Anti-PGRMC1 antibody (ab224054)

**All lanes :** Anti-PGRMC1 antibody (ab224054) at 1/100 dilution

**Lane 1 :** NIH/3T3 (mouse embryo fibroblast cell line) cell lysate

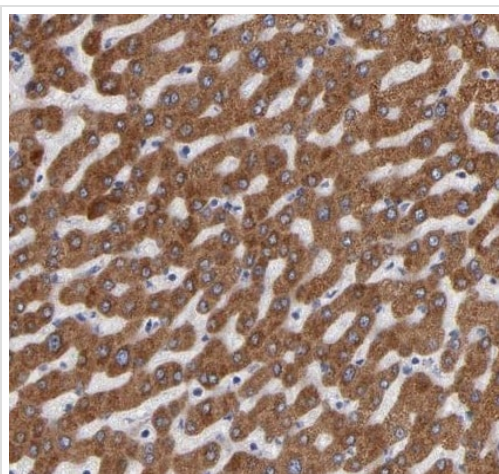
**Lane 2 :** NBT-II (rat cell line) cell lysate

**Predicted band size:** 22 kDa



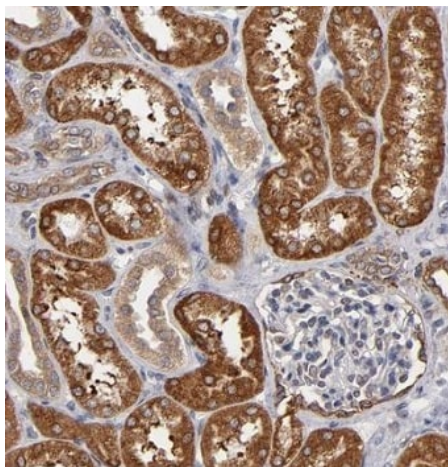
Immunohistochemistry (Formalin/PFA-fixed paraffin-embedded sections) - Anti-PGRMC1 antibody (ab224054)

**Negative control:** Paraffin embedded human skeletal tissue stained for PGRMC1 with ab224054 (1/500 dilution) in immunohistochemical analysis.



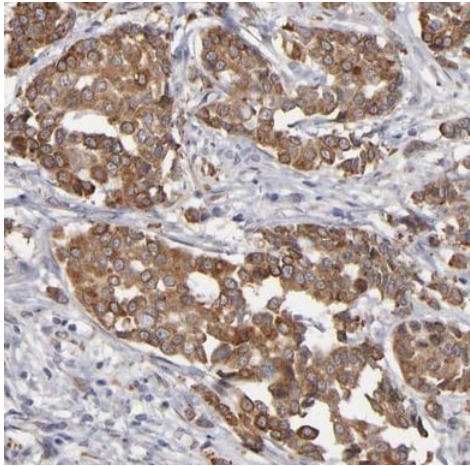
Paraffin embedded human liver tissue stained for PGRMC1 with ab224054 (1/500 dilution) in immunohistochemical analysis.

Immunohistochemistry (Formalin/PFA-fixed paraffin-embedded sections) - Anti-PGRMC1 antibody (ab224054)



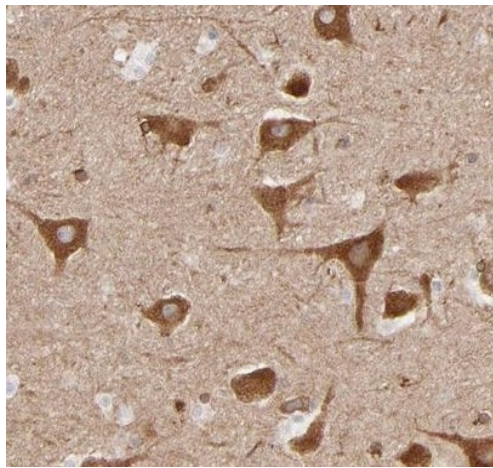
Paraffin embedded human kidney tissue stained for PGRMC1 with ab224054 (1/500 dilution) in immunohistochemical analysis.

Immunohistochemistry (Formalin/PFA-fixed paraffin-embedded sections) - Anti-PGRMC1 antibody (ab224054)



Paraffin embedded human breast cancer tissue stained for PGRMC1 with ab224054 (1/500 dilution) in immunohistochemical analysis.

Immunohistochemistry (Formalin/PFA-fixed paraffin-embedded sections) - Anti-PGRMC1 antibody (ab224054)



Paraffin embedded human hippocampus tissue stained for PGRMC1 with ab224054 (1/500 dilution) in immunohistochemical analysis.

Immunohistochemistry (Formalin/PFA-fixed paraffin-embedded sections) - Anti-PGRMC1 antibody (ab224054)

**Please note:** All products are "FOR RESEARCH USE ONLY. NOT FOR USE IN DIAGNOSTIC PROCEDURES"

**Our Abpromise to you: Quality guaranteed and expert technical support**

- Replacement or refund for products not performing as stated on the datasheet

- Valid for 12 months from date of delivery
- Response to your inquiry within 24 hours
  
- We provide support in Chinese, English, French, German, Japanese and Spanish
- Extensive multi-media technical resources to help you
- We investigate all quality concerns to ensure our products perform to the highest standards

If the product does not perform as described on this datasheet, we will offer a refund or replacement. For full details of the Abpromise, please visit <https://www.abcam.com/abpromise> or contact our technical team.

### **Terms and conditions**

---

- Guarantee only valid for products bought direct from Abcam or one of our authorized distributors