

## Product datasheet

# Anti-PHF21B antibody [OTI3D1] ab119249

★★★★★ [1 Abreviews](#) [11 Images](#)

### Overview

---

<b>Product name</b>	Anti-PHF21B antibody [OTI3D1]
<b>Description</b>	Mouse monoclonal [OTI3D1] to PHF21B
<b>Host species</b>	Mouse
<b>Tested applications</b>	<b>Suitable for:</b> Flow Cyt (Intra), WB, IHC-P, ICC/IF
<b>Species reactivity</b>	<b>Reacts with:</b> Human, Recombinant fragment
<b>Immunogen</b>	Recombinant full length protein corresponding to Human PHF21B. Produced in HEK293T cells (NP_612424.1). Database link: <a href="#">Q96EK2</a>
<b>Positive control</b>	IHC-P: Human Breast, Kidney, Endometrium, Liver, Ovary Adenocarcinoma, Pancreas carcinoma, Lung carcinoma and Thyroid Carcinoma tissues. WB: HEK-293T cell lysate transfected with pCMV6-ENTRY PHF21B cDNA. ICC/IF: COS7 cells transiently transfected by pCMV6-ENTRY PHF21B. Flow Cyt (Intra): HEK-293T cells transfected with pCMV6-ENTRY PHF21B overexpress plasmid.
<b>General notes</b>	<p>The Life Science industry has been in the grips of a reproducibility crisis for a number of years. Abcam is leading the way in addressing this with our range of recombinant monoclonal antibodies and knockout edited cell lines for gold-standard validation. Please check that this product meets your needs before purchasing.</p> <p>If you have any questions, special requirements or concerns, please send us an inquiry and/or contact our Support team ahead of purchase. Recommended alternatives for this product can be found below, along with publications, customer reviews and Q&amp;As</p>

### Properties

---

<b>Form</b>	Liquid
<b>Storage instructions</b>	Shipped at 4°C. Store at +4°C short term (1-2 weeks). Upon delivery aliquot. Store at -20°C long term. Avoid freeze / thaw cycle.
<b>Storage buffer</b>	pH: 7.30 Preservative: 0.02% Sodium azide Constituents: PBS, 50% Glycerol, 1% BSA
<b>Purity</b>	Affinity purified
<b>Purification notes</b>	Purified from cell culture supernatant by affinity chromatography.

<b>Clonality</b>	Monoclonal
<b>Clone number</b>	OTI3D1
<b>Isotype</b>	IgG2b

## Applications

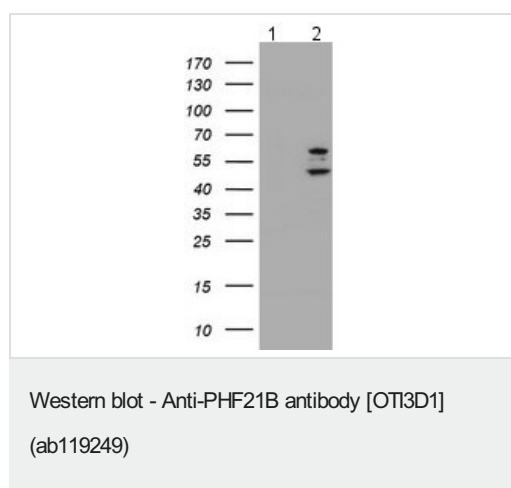
**The Abpromise guarantee** Our **Abpromise guarantee** covers the use of ab119249 in the following tested applications. The application notes include recommended starting dilutions; optimal dilutions/concentrations should be determined by the end user.

Application	Abreviews	Notes
Flow Cyt (Intra)		1/100. <b>ab170192</b> - Mouse monoclonal IgG2b, is suitable for use as an isotype control with this antibody.
WB	★★★★★ (1)	1/2000. Predicted molecular weight: 57 kDa.
IHC-P		1/150.
ICC/IF		1/100.

## Target

**Sequence similarities** Contains 1 PHD-type zinc finger.

## Images



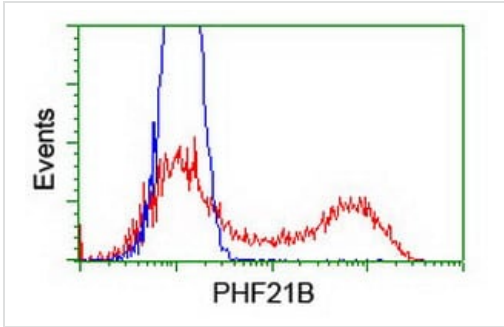
**All lanes** : Anti-PHF21B antibody [OTI3D1] (ab119249) at 1/2000 dilution

**Lane 1** : HEK-293T (human epithelial cell line from embryonic kidney transformed with large T antigen) cell lysate transfected with pCMV6-ENTRY control cDNA

**Lane 2** : HEK-293T cell lysate transfected with pCMV6-ENTRY PHF21B cDNA

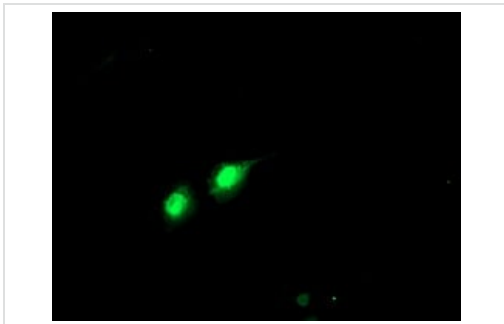
Lysates/proteins at 5 µg per lane.

**Predicted band size:** 57 kDa



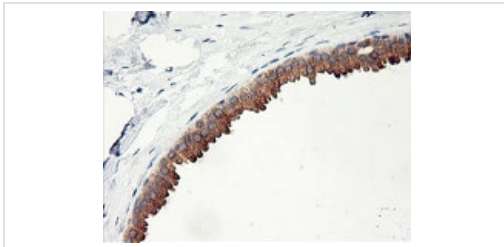
Flow Cytometry (Intracellular) - Anti-PHF21B antibody [OTI3D1] (ab119249)

Flow cytometric analysis of HEK-293T (human epithelial cell line from embryonic kidney transformed with large T antigen) cells transfected with either pCMV6-ENTRY PHF21B overexpress plasmid (Red) or empty vector control plasmid (Blue), stained using ab119249 at 1/100 dilution.



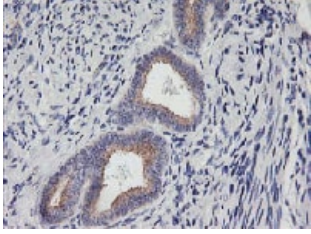
Immunocytochemistry/ Immunofluorescence - Anti-PHF21B antibody [OTI3D1] (ab119249)

COS-7 (African green monkey kidney fibroblast-like cell line) cells transiently transfected with pCMV6-ENTRY PHF21B, stained for PHF21B (green) using ab119249 at 1/100 dilution in ICC/IF.



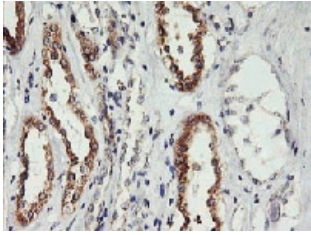
Immunohistochemistry (Formalin/PFA-fixed paraffin-embedded sections) - Anti-PHF21B antibody [OTI3D1] (ab119249)

Paraffin-embedded human breast tissue stained for PHF21B using ab119249 at 1/150 dilution in immunohistochemical analysis.



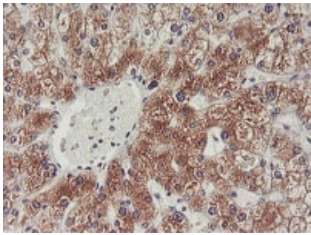
Immunohistochemistry (Formalin/PFA-fixed paraffin-embedded sections) - Anti-PHF21B antibody [OTI3D1] (ab119249)

Paraffin-embedded human endometrium tissue stained for PHF21B using ab119249 at 1/150 dilution in immunohistochemical analysis.



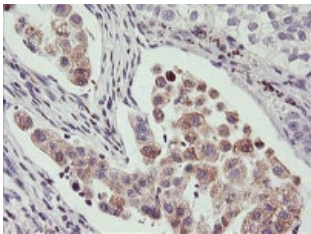
Immunohistochemistry (Formalin/PFA-fixed paraffin-embedded sections) - Anti-PHF21B antibody [OTI3D1] (ab119249)

Paraffin-embedded human kidney tissue stained for PHF21B using ab119249 at 1/150 dilution in immunohistochemical analysis.



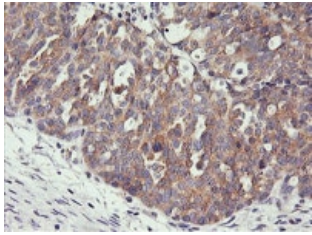
Immunohistochemistry (Formalin/PFA-fixed paraffin-embedded sections) - Anti-PHF21B antibody [OTI3D1] (ab119249)

Paraffin-embedded human liver tissue stained for PHF21B using ab119249 at 1/150 dilution in immunohistochemical analysis.



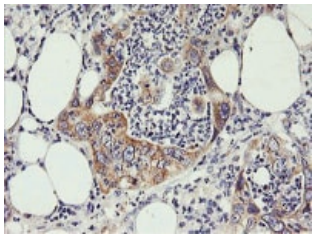
Immunohistochemistry (Formalin/PFA-fixed paraffin-embedded sections) - Anti-PHF21B antibody [OTI3D1] (ab119249)

Paraffin-embedded human lung carcinoma tissue stained for PHF21B using ab119249 at 1/150 dilution in immunohistochemical analysis.



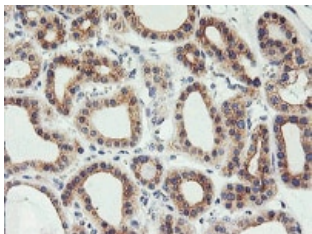
Paraffin-embedded human ovary adenocarcinoma tissue stained for PHF21B using ab119249 at 1/150 dilution in immunohistochemical analysis.

Immunohistochemistry (Formalin/PFA-fixed paraffin-embedded sections) - Anti-PHF21B antibody [OTI3D1] (ab119249)



Paraffin-embedded human pancreas carcinoma tissue stained for PHF21B using ab119249 at 1/150 dilution in immunohistochemical analysis.

Immunohistochemistry (Formalin/PFA-fixed paraffin-embedded sections) - Anti-PHF21B antibody [OTI3D1] (ab119249)



Paraffin-embedded human breast thyroid carcinoma tissue stained for PHF21B using ab119249 at 1/150 dilution in immunohistochemical analysis.

Immunohistochemistry (Formalin/PFA-fixed paraffin-embedded sections) - Anti-PHF21B antibody [OTI3D1] (ab119249)

**Please note:** All products are "FOR RESEARCH USE ONLY. NOT FOR USE IN DIAGNOSTIC PROCEDURES"

### **Our Abpromise to you: Quality guaranteed and expert technical support**

---

- Replacement or refund for products not performing as stated on the datasheet
- Valid for 12 months from date of delivery
- Response to your inquiry within 24 hours
- We provide support in Chinese, English, French, German, Japanese and Spanish
- Extensive multi-media technical resources to help you

- We investigate all quality concerns to ensure our products perform to the highest standards

If the product does not perform as described on this datasheet, we will offer a refund or replacement. For full details of the Abpromise, please visit <https://www.abcam.com/abpromise> or contact our technical team.

#### **Terms and conditions**

---

- Guarantee only valid for products bought direct from Abcam or one of our authorized distributors