

## Product datasheet

# Anti-Phospho Serine/Threonine Chk1/Chk2 substrate antibody ab131023

[1 References](#) [1 Image](#)

### Overview

<b>Product name</b>	Anti-Phospho Serine/Threonine Chk1/Chk2 substrate antibody
<b>Description</b>	Rabbit polyclonal to Phospho Serine/Threonine Chk1/Chk2 substrate
<b>Host species</b>	Rabbit
<b>Tested applications</b>	<b>Suitable for:</b> WB
<b>Species reactivity</b>	<b>Reacts with:</b> Human
<b>Immunogen</b>	Synthetic peptide within Human Phospho Serine/Threonine Chk1/Chk2 substrate aa 1-100 conjugated to keyhole limpet haemocyanin. The exact sequence is proprietary. Database link: <a href="#">P04637</a>
<b>Positive control</b>	This antibody gave a positive signal in HeLa and HeLa UV irradiated whole cell lysates.
<b>General notes</b>	<p>The Life Science industry has been in the grips of a reproducibility crisis for a number of years. Abcam is leading the way in addressing this with our range of recombinant monoclonal antibodies and knockout edited cell lines for gold-standard validation. Please check that this product meets your needs before purchasing.</p> <p>If you have any questions, special requirements or concerns, please send us an inquiry and/or contact our Support team ahead of purchase. Recommended alternatives for this product can be found below, along with publications, customer reviews and Q&amp;As</p>

### Properties

<b>Form</b>	Liquid
<b>Storage instructions</b>	Shipped at 4°C. Store at +4°C short term (1-2 weeks). Upon delivery aliquot. Store at -20°C or -80°C. Avoid freeze / thaw cycle.
<b>Storage buffer</b>	pH: 7.40 Preservative: 0.02% Sodium azide Constituent: PBS  Batches of this product that have a concentration < 1mg/ml may have BSA added as a stabilising agent. If you would like information about the formulation of a specific lot, please contact our scientific support team who will be happy to help.
<b>Purity</b>	Immunogen affinity purified

<b>Clonality</b>	Polyclonal
<b>Isotype</b>	IgG

## Applications

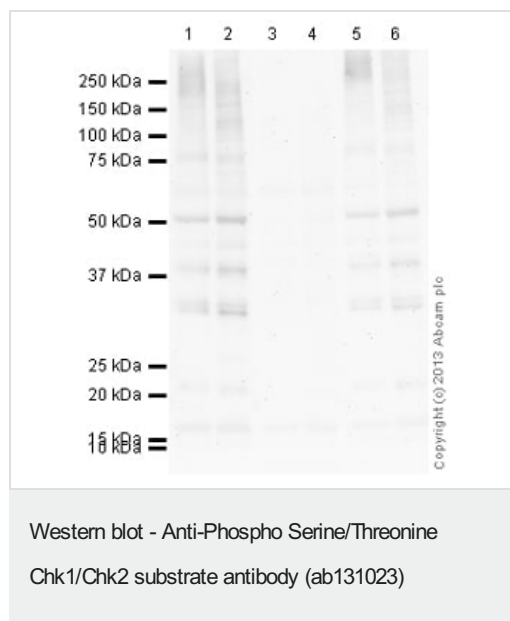
**The Abpromise guarantee** Our **Abpromise guarantee** covers the use of ab131023 in the following tested applications. The application notes include recommended starting dilutions; optimal dilutions/concentrations should be determined by the end user.

Application	Abreviews	Notes
<b>WB</b>		Use a concentration of 1 µg/ml. Detects a band of approximately 53 kDa (predicted molecular weight: 53 kDa).

## Target

**Relevance** Several protein kinases mediate cellular responses to DNA damage. This includes the serine/threonine kinases Chk1 and Chk2. In response to DNA damage Chk1 and Chk2 phosphorylate a large range of proteins on Serine (S) or Threonine (T) residues on RxxS/T degenerated consensus sites.

## Images



**All lanes :** Anti-Phospho Serine/Threonine Chk1/Chk2 substrate antibody (ab131023) at 1 µg/ml

**Lane 1 :** HeLa (Human epithelial carcinoma cell line) Whole Cell Lysate

**Lane 2 :** HeLa Whole Cell Lysate - UV Irradiated

**Lane 3 :** HeLa (Human epithelial carcinoma cell line) Whole Cell Lysate with Immunising peptide at 1 µg/ml

**Lane 4 :** HeLa Whole Cell Lysate - UV Irradiated with Immunising peptide at 1 µg/ml

**Lane 5 :** HeLa (Human epithelial carcinoma cell line) Whole Cell Lysate with Anti-HIF-1 alpha antibody [H1alpha67] (**ab1**)

**Lane 6 :** HeLa Whole Cell Lysate - UV Irradiated with Anti-HIF-1 alpha antibody [H1alpha67] (**ab1**)

Lysates/proteins at 10 µg per lane.

## Secondary

**All lanes :** Goat Anti-Rabbit IgG H&L (HRP) (**ab97051**) at 1/10000 dilution

Developed using the ECL technique.

Performed under reducing conditions.

**Predicted band size:** 53 kDa

**Observed band size:** 53 kDa

**Exposure time:** 4 minutes

This blot was produced using a 4-12% Bis-tris gel under the MOPS buffer system. The gel was run at 200V for 50 minutes before being transferred onto a Nitrocellulose membrane at 30V for 70 minutes. The membrane was then blocked for an hour using 5% Bovine Serum Albumin before being incubated with ab131023 overnight at 4°C. Antibody binding was detected using an anti-rabbit antibody conjugated to HRP, and visualised using ECL development solution.

**Please note:** All products are "FOR RESEARCH USE ONLY. NOT FOR USE IN DIAGNOSTIC PROCEDURES"

### Our Abpromise to you: Quality guaranteed and expert technical support

---

- Replacement or refund for products not performing as stated on the datasheet
- Valid for 12 months from date of delivery
- Response to your inquiry within 24 hours
- We provide support in Chinese, English, French, German, Japanese and Spanish
- Extensive multi-media technical resources to help you
- We investigate all quality concerns to ensure our products perform to the highest standards

If the product does not perform as described on this datasheet, we will offer a refund or replacement. For full details of the Abpromise, please visit <https://www.abcam.com/abpromise> or contact our technical team.

### Terms and conditions

---

- Guarantee only valid for products bought direct from Abcam or one of our authorized distributors