


Anti-Phospholamban (phospho S16) antibody [EPR1911] - BSA and Azide free ab247592

Recombinant RabMAb

2 Images

Overview

Product name	Anti-Phospholamban (phospho S16) antibody [EPR1911] - BSA and Azide free
Description	Rabbit monoclonal [EPR1911] to Phospholamban (phospho S16) - BSA and Azide free
Host species	Rabbit
Tested applications	Suitable for: WB Unsuitable for: IHC-P
Species reactivity	Reacts with: Human Predicted to work with: Mouse 
Immunogen	Synthetic peptide. This information is proprietary to Abcam and/or its suppliers.
General notes	<p>ab247592 is the carrier-free version of ab92697.</p> <p>Our carrier-free antibodies are typically supplied in a PBS-only formulation, purified and free of BSA, sodium azide and glycerol. The carrier-free buffer and high concentration allow for increased conjugation efficiency.</p> <p>This conjugation-ready format is designed for use with fluorochromes, metal isotopes, oligonucleotides, and enzymes, which makes them ideal for antibody labelling, functional and cell-based assays, flow-based assays (e.g. mass cytometry) and Multiplex Imaging applications.</p> <p>Use our conjugation kits for antibody conjugates that are ready-to-use in as little as 20 minutes with <1 minute hands-on-time and 100% antibody recovery: available for fluorescent dyes, HRP, biotin and gold.</p> <p>This product is compatible with the Maxpar[®] Antibody Labeling Kit from Fluidigm, without the need for antibody preparation. Maxpar[®] is a trademark of Fluidigm Canada Inc.</p> <p>This product is a recombinant monoclonal antibody, which offers several advantages including:</p> <ul style="list-style-type: none">- High batch-to-batch consistency and reproducibility- Improved sensitivity and specificity- Long-term security of supply- Animal-free production <p>For more information see here.</p> <p>Our RabMAb[®] technology is a patented hybridoma-based technology for making rabbit monoclonal antibodies. For details on our patents, please refer to RabMAb[®] patents.</p>

Rat: We have preliminary internal testing data to indicate this antibody may not react with this species. Please contact us for more information.

Properties

Form	Liquid
Storage instructions	Shipped at 4°C. Store at +4°C. Do Not Freeze.
Storage buffer	pH: 7.2 Constituent: PBS
Carrier free	Yes
Purity	Protein A purified
Clonality	Monoclonal
Clone number	EPR1911
Isotype	IgG

Applications

The Abpromise guarantee Our **Abpromise guarantee** covers the use of ab247592 in the following tested applications. The application notes include recommended starting dilutions; optimal dilutions/concentrations should be determined by the end user.

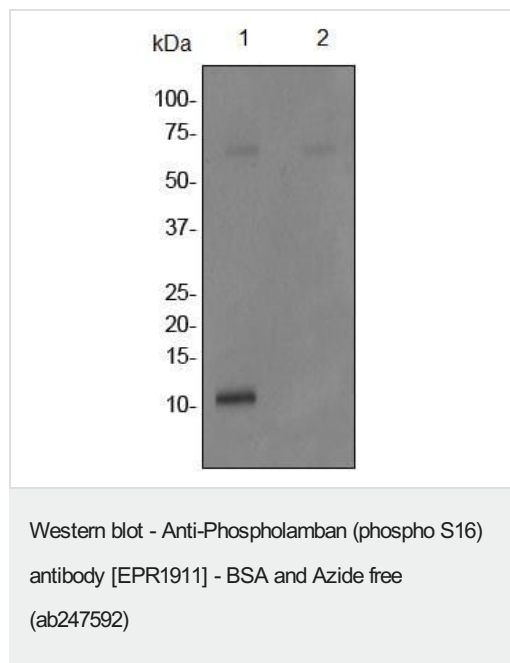
Application	Abreviews	Notes
WB		Use at an assay dependent concentration. Detects a band of approximately 11 kDa (predicted molecular weight: 6 kDa).

Application notes Is unsuitable for IHC-P.

Target

Function	Reversibly inhibits the activity of ATP2A2 in cardiac sarcoplasmic reticulum by decreasing the apparent affinity of the ATPase for Ca(2+). Modulates the contractility of the heart muscle in response to physiological stimuli via its effects on ATP2A2. Modulates calcium re-uptake during muscle relaxation and plays an important role in calcium homeostasis in the heart muscle. The degree of ATP2A2 inhibition depends on the oligomeric state of PLN. ATP2A2 inhibition is alleviated by PLN phosphorylation.
Tissue specificity	Heart muscle (at protein level).
Involvement in disease	Cardiomyopathy, dilated 1P Cardiomyopathy, familial hypertrophic 18
Sequence similarities	Belongs to the phospholamban family.
Post-translational modifications	Phosphorylation by PKA abolishes the inhibition of ATP2A2-mediated calcium uptake. Phosphorylated at Thr-17 by CaMK2, and in response to beta-adrenergic stimulation. Phosphorylation by DMPK may stimulate sarcoplasmic reticulum calcium uptake in cardiomyocytes.
Cellular localization	Endoplasmic reticulum membrane. Sarcoplasmic reticulum membrane. Mitochondrion membrane. Membrane. Colocalizes with HAX1 at the endoplasmic reticulum

Images



All lanes : Anti-Phospholamban (phospho S16) antibody [EPR1911] ([ab92697](#)) at 1/200000 dilution

Lane 1 : Fetal heart lysate (untreated)

Lane 2 : Fetal heart lysate (treated with LP)

Lysates/proteins at 10 µg per lane.

Secondary

All lanes : HRP labelled Goat anti-Rabbit antibody at 1/2000 dilution

Predicted band size: 6 kDa

This data was developed using [ab92697](#), the same antibody clone in a different buffer formulation.

Actual band size is 11 KDa.

Why choose a recombinant antibody?

- **Research with confidence**
Consistent and reproducible results
- **Long-term and scalable supply**
Recombinant technology
- **Success from the first experiment**
Confirmed specificity
- **Ethical standards compliant**
Animal-free production

Anti-Phospholamban (phospho S16) antibody [EPR1911] - BSA and Azide free (ab247592)

Please note: All products are "FOR RESEARCH USE ONLY. NOT FOR USE IN DIAGNOSTIC PROCEDURES"

Our Abpromise to you: Quality guaranteed and expert technical support

- Replacement or refund for products not performing as stated on the datasheet
- Valid for 12 months from date of delivery
- Response to your inquiry within 24 hours

- We provide support in Chinese, English, French, German, Japanese and Spanish
- Extensive multi-media technical resources to help you
- We investigate all quality concerns to ensure our products perform to the highest standards

If the product does not perform as described on this datasheet, we will offer a refund or replacement. For full details of the Abpromise, please visit <https://www.abcam.com/abpromise> or contact our technical team.

Terms and conditions

- Guarantee only valid for products bought direct from Abcam or one of our authorized distributors