

Product datasheet

Anti-Phospholipase C beta 3/PLCB3 antibody [EPR5951] ab124735

KO VALIDATED Recombinant RabMAB

5 Images

Overview

Product name	Anti-Phospholipase C beta 3/PLCB3 antibody [EPR5951]
Description	Rabbit monoclonal [EPR5951] to Phospholipase C beta 3/PLCB3
Host species	Rabbit
Tested applications	Suitable for: WB, IHC-P Unsuitable for: Flow Cyt, ICC/IF or IP
Species reactivity	Reacts with: Human
Immunogen	Synthetic peptide. This information is proprietary to Abcam and/or its suppliers.
Positive control	HCT 116, 293T, and A431, HeLa cell lysates; Human breast and colon tissues.
General notes	<p>This product is a recombinant monoclonal antibody, which offers several advantages including:</p> <ul style="list-style-type: none"> - High batch-to-batch consistency and reproducibility - Improved sensitivity and specificity - Long-term security of supply - Animal-free production <p>For more information see here.</p> <p>Our RabMAB[®] technology is a patented hybridoma-based technology for making rabbit monoclonal antibodies. For details on our patents, please refer to RabMAB[®] patents.</p> <p>Mouse, Rat: We have preliminary internal testing data to indicate this antibody may not react with these species. Please contact us for more information.</p>

Properties

Form	Liquid
Storage instructions	Shipped at 4°C. Store at -20°C. Stable for 12 months at -20°C.
Storage buffer	pH: 7.20 Preservative: 0.05% Sodium azide Constituents: 40% Glycerol (glycerin, glycerine), 9.85% Tris glycine, 50% Tissue culture supernatant
Purity	Protein A purified

Clonality	Monoclonal
Clone number	EPR5951
Isotype	IgG

Applications

The Abpromise guarantee Our **Abpromise guarantee** covers the use of ab124735 in the following tested applications. The application notes include recommended starting dilutions; optimal dilutions/concentrations should be determined by the end user.

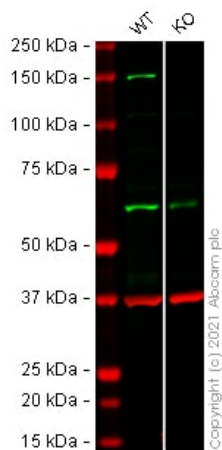
Application	Abreviews	Notes
WB		1/1000 - 1/10000. Detects a band of approximately 150 kDa (predicted molecular weight: 139 kDa).
IHC-P		1/100 - 1/250. Perform heat mediated antigen retrieval before commencing with IHC staining protocol. Heat up to 98 degrees C, below boiling, and then let cool for 10-20 min.

Application notes Is unsuitable for Flow Cyt, ICC/IF or IP.

Target

Function	The production of the second messenger molecules diacylglycerol (DAG) and inositol 1,4,5-trisphosphate (IP3) is mediated by activated phosphatidylinositol-specific phospholipase C enzymes.
Sequence similarities	Contains 1 C2 domain. Contains 1 PI-PLC X-box domain. Contains 1 PI-PLC Y-box domain.
Cellular localization	Membrane.

Images



Western blot - Anti-Phospholipase C beta 3/PLCB3 antibody [EPR5951] (ab124735)

All lanes : Anti-Phospholipase C beta 3/PLCB3 antibody [EPR5951] (ab124735) at 1/1000 dilution

Lane 1 : Wild-type HeLa (Human epithelial cell line from cervix adenocarcinoma) whole cell lysate

Lane 2 : PLCB3 knockout HeLa (Human epithelial cell line from cervix adenocarcinoma) whole cell lysate

Lysates/proteins at 20 µg per lane.

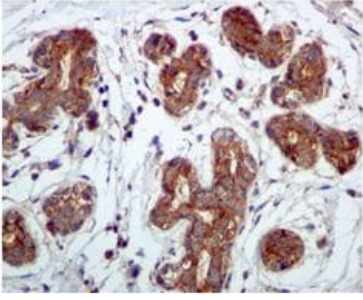
Performed under reducing conditions.

Predicted band size: 139 kDa

Observed band size: 150 kDa

Lanes 1 - 2: Merged signal (red and green). Green - ab124735 observed at 150 kDa. Red - loading control **ab8245** (Mouse anti-GAPDH antibody [6C5]) observed at 37 kDa.

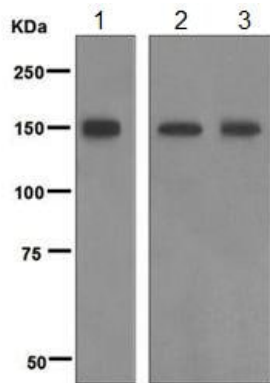
ab124735 was shown to react with Phospholipase C beta 3/PLCB3 in wild-type HeLa cells in Western blot with loss of signal observed in PLCB3 knockout cell line **ab266034** (PLCB3 knockout cell lysate **ab258122**). Wild-type HeLa and PLCB3 knockout cell lysates were subjected to SDS-PAGE. Membranes were blocked in 3 % milk in TBS-T (0.1 % Tween[®]) before incubation with ab124735 and **ab8245** (Mouse anti-GAPDH antibody [6C5]) overnight at 4 °C at a 1 in 1000 dilution and a 1 in 20000 dilution respectively. Blots were incubated with Goat anti-Rabbit IgG H&L (IRDye[®] 800CW) preabsorbed (**ab216773**) and Goat anti-Mouse IgG H&L (IRDye[®] 680RD) preabsorbed (**ab216776**) secondary antibodies at 1 in 20000 dilution for 1 h at room temperature before imaging.



Immunohistochemistry (Formalin/PFA-fixed paraffin-embedded sections) - Anti-Phospholipase C beta 3/PLCB3 antibody [EPR5951] (ab124735)

ab124735 at 1/100 dilution staining Phospholipase C beta 3/PLCB3 in paraffin-embedded Human breast tissue by Immunohistochemistry.

Perform heat mediated antigen retrieval before commencing with IHC staining protocol.



Western blot - Anti-Phospholipase C beta 3/PLCB3 antibody [EPR5951] (ab124735)

All lanes : Anti-Phospholipase C beta 3/PLCB3 antibody [EPR5951] (ab124735) at 1/1000 dilution

Lane 1 : HCT 116 cell lysate

Lane 2 : 293T (Human embryonic kidney epithelial cell) cell lysate

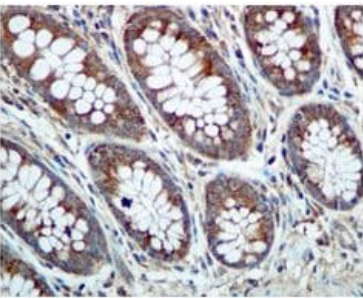
Lane 3 : A431 cell lysate

Lysates/proteins at 10 µg per lane.

Secondary

All lanes : Goat anti-Rabbit HRP at 1/2000 dilution

Predicted band size: 139 kDa



Immunohistochemistry (Formalin/PFA-fixed paraffin-embedded sections) - Anti-Phospholipase C beta 3/PLCB3 antibody [EPR5951] (ab124735)

ab124735 at 1/100 dilution staining Phospholipase C beta 3/PLCB3 in paraffin-embedded Human colon tissue by Immunohistochemistry.

Perform heat mediated antigen retrieval before commencing with IHC staining protocol.

Why choose a recombinant antibody?



Research with confidence
Consistent and reproducible results



Long-term and scalable supply
Recombinant technology



Success from the first experiment
Confirmed specificity



Ethical standards compliant
Animal-free production

Anti-Phospholipase C beta 3/PLCB3 antibody
[EPR5951] (ab124735)

Please note: All products are "FOR RESEARCH USE ONLY. NOT FOR USE IN DIAGNOSTIC PROCEDURES"

Our Abpromise to you: Quality guaranteed and expert technical support

- Replacement or refund for products not performing as stated on the datasheet
- Valid for 12 months from date of delivery
- Response to your inquiry within 24 hours
- We provide support in Chinese, English, French, German, Japanese and Spanish
- Extensive multi-media technical resources to help you
- We investigate all quality concerns to ensure our products perform to the highest standards

If the product does not perform as described on this datasheet, we will offer a refund or replacement. For full details of the Abpromise, please visit <https://www.abcam.com/abpromise> or contact our technical team.

Terms and conditions

- Guarantee only valid for products bought direct from Abcam or one of our authorized distributors