

## Product datasheet

### Anti-Phospholipase C gamma 1/PLC-gamma-1 (phospho Y1253) antibody [EP1502Y] ab81284

Recombinant RabMAb

2 Images

#### Overview

<b>Product name</b>	Anti-Phospholipase C gamma 1/PLC-gamma-1 (phospho Y1253) antibody [EP1502Y]
<b>Description</b>	Rabbit monoclonal [EP1502Y] to Phospholipase C gamma 1/PLC-gamma-1 (phospho Y1253)
<b>Host species</b>	Rabbit
<b>Tested applications</b>	<b>Suitable for:</b> WB <b>Unsuitable for:</b> IHC-P or IP
<b>Species reactivity</b>	<b>Reacts with:</b> Human
<b>Immunogen</b>	Synthetic peptide. This information is proprietary to Abcam and/or its suppliers.
<b>Positive control</b>	Jurkat + Pervanadate cell lysate.
<b>General notes</b>	<p>This product is a recombinant monoclonal antibody, which offers several advantages including:</p> <ul style="list-style-type: none"> <li>- High batch-to-batch consistency and reproducibility</li> <li>- Improved sensitivity and specificity</li> <li>- Long-term security of supply</li> <li>- Animal-free production</li> </ul> <p>For more information <a href="#">see here</a>.</p> <p>Our RabMAb<sup>®</sup> technology is a patented hybridoma-based technology for making rabbit monoclonal antibodies. For details on our patents, please refer to <a href="#">RabMAb<sup>®</sup> patents</a>.</p> <p>Mouse, Rat: We have preliminary internal testing data to indicate this antibody may not react with these species. Please contact us for more information.</p>

#### Properties

<b>Form</b>	Liquid
<b>Storage instructions</b>	Shipped at 4°C. Upon delivery aliquot and store at -20°C. Avoid freeze / thaw cycles.
<b>Storage buffer</b>	<p>pH: 7.20</p> <p>Preservative: 0.05% Sodium azide</p> <p>Constituents: 0.1% BSA, 40% Glycerol (glycerin, glycerine), 9.85% Tris glycine, 50% Tissue culture supernatant</p>
<b>Purity</b>	Protein A purified

<b>Clonality</b>	Monoclonal
<b>Clone number</b>	EP1502Y
<b>Isotype</b>	IgG

## Applications

**The Abpromise guarantee** Our **Abpromise guarantee** covers the use of ab81284 in the following tested applications. The application notes include recommended starting dilutions; optimal dilutions/concentrations should be determined by the end user.

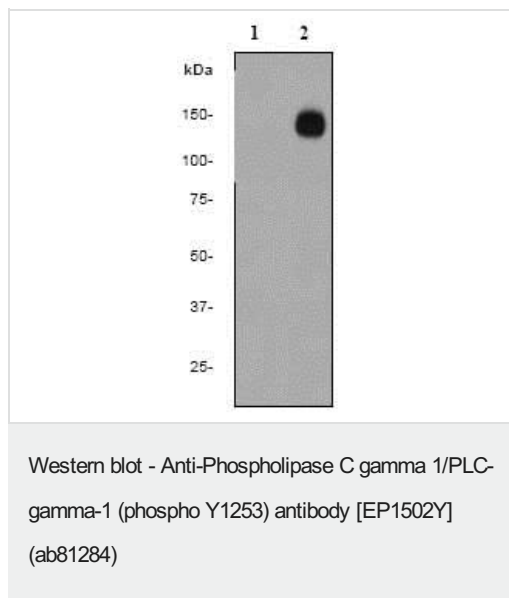
Application	Abreviews	Notes
<b>WB</b>		1/2000 - 1/5000. Predicted molecular weight: 149 kDa.

**Application notes** Is unsuitable for IHC-P or IP.

## Target

<b>Function</b>	Plays a role in actin reorganization and cell migration. The production of the second messenger molecules diacylglycerol (DAG) and inositol 1,4,5-trisphosphate (IP3) is mediated by activated phosphatidylinositol-specific phospholipase C enzymes. Major substrate for heparin-binding growth factor 1 (acidic fibroblast growth factor)-activated tyrosine kinase.
<b>Sequence similarities</b>	Contains 1 C2 domain. Contains 1 EF-hand domain. Contains 2 PH domains. Contains 1 PI-PLC X-box domain. Contains 1 PI-PLC Y-box domain. Contains 2 SH2 domains. Contains 1 SH3 domain.
<b>Domain</b>	The SH3 domain mediates interaction with CLNK (By similarity). The SH3 domain also mediates interaction with RALGPS1.
<b>Post-translational modifications</b>	The receptor-mediated activation of PLC-gamma-1 and PLC-gamma-2 involves their phosphorylation by tyrosine kinases in response to ligation of a variety of growth factor receptors and immune system receptors. May be dephosphorylated by PTPRJ. Ubiquitinated by CBLB in activated T-cells.
<b>Cellular localization</b>	Cell projection > lamellipodium. Cell projection > ruffle. Rapidly redistributed to ruffles and lamellipodia structures in response to epidermal growth factor (EGF) treatment.

## Images



**All lanes :** Anti-Phospholipase C gamma 1/PLC-gamma-1 (phospho Y1253) antibody [EP1502Y] (ab81284) at 1/2000 dilution

**Lane 1 :** Jurkat cell lysate

**Lane 2 :** Jurkat + Pervanadate cell lysate

Lysates/proteins at 10 µg per lane.

#### Secondary

**All lanes :** HRP conjugated goat anti-rabbit at 1/2000 dilution

**Predicted band size:** 149 kDa

**Observed band size:** 149 kDa

Why choose a recombinant antibody?

 <p><b>Research with confidence</b> Consistent and reproducible results</p>	 <p><b>Long-term and scalable supply</b> Recombinant technology</p>
 <p><b>Success from the first experiment</b> Confirmed specificity</p>	 <p><b>Ethical standards compliant</b> Animal-free production</p>

Anti-Phospholipase C gamma 1/PLC-gamma-1 (phospho Y1253) antibody [EP1502Y] (ab81284)

**Please note:** All products are "FOR RESEARCH USE ONLY. NOT FOR USE IN DIAGNOSTIC PROCEDURES"

#### Our Abpromise to you: Quality guaranteed and expert technical support

- Replacement or refund for products not performing as stated on the datasheet
- Valid for 12 months from date of delivery
- Response to your inquiry within 24 hours

- We provide support in Chinese, English, French, German, Japanese and Spanish
- Extensive multi-media technical resources to help you
- We investigate all quality concerns to ensure our products perform to the highest standards

If the product does not perform as described on this datasheet, we will offer a refund or replacement. For full details of the Abpromise, please visit <https://www.abcam.com/abpromise> or contact our technical team.

#### **Terms and conditions**

---

- Guarantee only valid for products bought direct from Abcam or one of our authorized distributors